

AMERICA'S FASTEST-RISING UNIVERSITY

Ranked #46 among Public Institutions &
#103 among Public and Private Universities
in *U.S. News & World Report (2022)*



UNIVERSITY of
SOUTH FLORIDA

pocket fact book

2021-2022

USF TOP 50

The University of South Florida is classified as Doctoral Universities: Highest Research Activity by the Carnegie Classification of Institutions of Higher Education.

#18

among U.S. public universities
for Social Mobility
U.S. News and World Report (2022)

#1

among Florida Public Universities &

#8

among all U.S. Universities
Best Universities for Reducing Inequalities
Times Higher Education (THE), 2021

#61

for public institutions and jumping
313 SPOTS
for institutions overall since 2012
Forbes America's Top Colleges 2021

#29

among public U.S.
institutions in the World
University Ranking
Times Higher Education (THE), 2022

#33

among public U.S.
institutions
*Academic Ranking of World
Universities (ARWU), 2021*

#43

among public institutions
in the National
University Ranking
Washington Monthly, 2021

TOP 100

among all
public institutions
Forbes' America's Top Colleges 2021

About the cover: The University of South Florida is rapidly rising on the list of best universities in America, now #46 among public universities, according to new rankings released by *U.S. News and World Report* (2022).

#2 PERFORMANCE-BASED FUNDING (PBF) SCORES

in the State University System (SUS)

Florida Board of Governors (BOG), 2021



Top achievements in these important metrics demonstrate USF's commitment to providing affordable access, graduating students on time, and preparing students to compete successfully in high-demand career fields.



A PREEMINENT STATE RESEARCH UNIVERSITY

#2

for total graduate volunteers

&

#25

for undergraduate volunteers

Since the agency's founding in 1961, more than

549 USF ALUMNI

have served abroad as Peace Corps volunteers

Peace Corps, 2020



52 RECIPIENTS

national scholarship and fellowship student awardees during the 2020-2021 academic year including Boren, Fulbright, Gilman, and Goldwater



Weatherford



Griffin



Boaz



Callahan



Carrere



Cunningham



Horton



Monbarren



Muma



Patel



Piccolo



Ramil



Seixas

USF BOARD OF TRUSTEES

Will Weatherford, Chair

Micheal E. Griffin, Vice Chair

Timothy Boaz

Sandra Callahan

Michael Carrere

Julia Cunningham

Oscar Horton

Lauran Monbarren

Leslie Muma

Shilen Patel

Fredrick Piccolo

John B. Ramil

Melissa Seixas

The USF Board of Trustees is responsible for cost-effective policy decisions appropriate to the university mission and the implementation and maintenance of high-quality education programs within the laws and rules of the state. The USF Board of Trustees was created in 2001 by the Florida legislature.

The 13 trustees include distinguished figures in accounting, banking, business, education, law, technology, philanthropy, and public policy leadership. Six trustees are appointed by Florida's governor, and five trustees are appointed by the Florida Board of Governors. The USF Faculty Senate President and USF Student Body President also serve as trustees. The USF President serves as Corporate Secretary.

USF LEADERSHIP

Rhea Law
Interim President

Ralph Wilcox
Provost and Executive Vice President

Martin Tadlock
Regional Chancellor, St. Petersburg campus

Karen Holbrook
Regional Chancellor, Sarasota-Manatee campus

Charles Lockwood
Senior Vice President for USF Health

Jay Stroman
Senior Vice President of Advancement & Alumni Affairs and USF Foundation CEO

Sylvia Wilson Thomas
Interim Vice President for Research & Innovation and President & CEO of the USF Research Foundation, Inc.

Elizabeth Hordge-Freeman
Interim Vice President, Diversity, Inclusion & Equal Opportunity and Senior Advisor to the President and Provost for Diversity and Inclusion

Michael Kelly
Vice President of Intercollegiate Athletics

Kim Hill
Vice President of University Communications and Marketing and Chief Marketing Officer

Richard Sobieray
Interim Senior Vice President for Financial Strategy

USF STUDENTS *at a glance*



Fall 2021 Freshman academic profile holds an average

SAT SCORE OF 1297

and a

HIGH SCHOOL GPA OF 4.18



USF is home to a Student body of

49,867 STUDENTS

representing more than

146 DIFFERENT COUNTRIES



Morsani College of Medicine
2025 Class represents the
most diverse and strongest
academic class

with an average

**MCAT SCORE
OF 517**

placing it among the

**94th PERCENTILE
NATIONALLY**

with a GPA of

3.83

UNIVERSITY *enrollment*



	TOTAL	
Undergraduate	36,854	73.9%
male	15,907	43.2%
female	20,946	56.8%
not reported	1	0.0%
full-time	28,696	77.9%
part-time	8,158	22.1%
Graduate	9,493	19.0%
male	3,640	38.3%
female	5,850	61.6%
not reported	3	0.03%
full-time	5,391	56.8%
part-time	4,102	43.2%
Doctor of Medicine	1,663	3.3%
male	669	40.2%
female	982	59.0%
not reported	12	0.7%
full-time	1,404	83.6%
part-time	259	16.4%
Nondegree-Seeking	1,857	3.7%
male	808	43.5%
female	1,049	56.5%
not reported	0	0.0%
full-time	368	19.8%
part-time	1,489	80.2%
TOTAL	49,867	100%
male	21,024	42.2%
female	28,827	57.8%
not reported	16	0.0%
full-time	35,859	71.9%
part-time	14,008	28.1%

Enrollment Data as of Drop/Add Fall 2021

FIRST TIME IN COLLEGE (FTIC) *enrollment*



NEW STUDENT PROFILE

	TOTAL
Number of new FTICs, fall 2021	4,143
Average high school GPA	4.18
Average SAT	1297
Mid-range SAT	1220 - 1360
Average ACT	28
Mid-range ACT	26 - 30
Top 10% of high school class	37%
Florida residents receiving Bright Futures scholarship	76.2%
Non-white*	41%
Reside in on-campus housing (fall)	2,351 (56.7%)
National Merit Scholars	62
National Achievement Scholars	0
National Hispanic Scholars	1
Florida residents	3,245
Out-of-state students	898
Florida counties represented	48
States represented	44
Countries represented	79
Florida high schools represented	434

**Does not include students who report as white, non-resident aliens, and race not-reported*

Enrollment Data as of Drop/Add Fall 2021

NEW STUDENT PROFILE

TRANSFER STUDENTS

TOTAL

Number of new transfer students*	3,952
New transfer students from the Florida College System	2,524
Other new transfer students	1,428
All new transfer students who are non-white**	42%
Highest number of transfer students are from:	Hillsborough Community College

*Does not include post baccalaureate degree seeking students

**Does not include students who report as white, non-resident aliens, and race not-reported

GRADUATE STUDENTS

TOTAL

New graduate students	3,440
Master's & education specialist	2,644
Doctoral research	387
Doctoral professional	409

Enrollment Data as of Drop/Add Fall 2021



**TRANSFER &
GRADUATE**
enrollment

STUDENT DIVERSITY *profile*



	TOTAL	
African American	4,276	9.5%
male	1,569	3.5%
female	2,706	6.0%
not reported	1	0.0%
American Indian	69	0.0%
male	35	0.1%
female	34	0.1%
not reported	0	0.0%
Asian	3,624	8.0%
male	1,560	3.5%
female	2,064	4.6%
not reported	0	0.0%
Hispanic	10,007	22.2%
male	3,962	8.8%
female	6,041	13.4%
not reported	4	0.0%
White	23,271	51.5%
male	9,558	21.2%
female	13,709	30.3%
not reported	4	0.0%
Native Hawaiian or Other Pacific Islander	56	0.1%
male	25	0.1%
female	31	0.1%
not reported	0	0.0%

	TOTAL	
Two or More Races	1,845	4.1%
male	713	1.6%
female	1,132	2.5%
not reported	0	0.0%
Race-Not Reported	2,027	4.5%
male	856	1.9%
female	1,164	2.6%
not reported	7	0.0%
TOTAL *	45,175	100.0%
male	18,278	40.5%
female	26,881	59.5%
not reported	16	0.0%

**Student Diversity Profile reflects federal race/ethnicity categories only and does not include international students or non-resident aliens. .*

	TOTAL	
Undergraduate	2,491	5.0%
Graduate	1,889	3.8%
Total Nondegree-Seeking	312	0.6%
Total International Students	4,692	9.4%
TOTAL	49,867	

All Student Diversity Profile Data as of Drop/Add Fall 2021

UNIVERSITY *academics*

USF graduate programs continue to be **ranked among the best among all universities**. USF graduate programs in the top 50 include: (academic value)

- | | | | |
|------------|---|------------|--|
| #2 | Industrial and Organizational Psychology | #27 | Rehabilitation Counseling |
| #20 | Public Health | #27 | Library and Information Sciences |
| #18 | Audiology | #38 | Engineering: Environmental/ Environmental Health |
| #18 | Criminology | #43 | Health Care Management |
| #25 | Medical: Graduates Practicing in Health Professional Shortage Areas | #48 | Medical: Research |
| | | #49 | Physical Therapy |

2022 U.S. News and World Report (USNWR) Graduate School Rankings



- 2nd** among Florida public institutions
- 3rd** in Florida
- 19th** among public institutions
- 21st** among all U.S. institutions

2021 Military Times Best: Colleges

#7 IN THE NATION
for Top Producer of Fulbright Scholars, with
9 FACULTY SCHOLARS
for the 2020-2021 academic year.
The Chronicle of Higher Education

HEADCOUNT *by college*

degree-seeking students

COLLEGE	UNDERGRADUATE	GRADUATE	TOTAL
College of Arts and Sciences	16,112	1,759	17,871
College of Behavioral and Community Sciences	2,033	1,022	3,055
College of Education	1,019	1,055	2,074
College of Engineering	5,122	1,001	6,123
College of Marine Science	0	88	88
College of Nursing	1,031	1,005	2,036
College of Public Health	3,158	854	4,012
College of The Arts	1,000	204	1,204
Morsani College of Medicine	0	1,663	1,663
Muma College of Business	5,178	1,793	6,971
Office of Graduate Studies	0	162	162
Office of Undergraduate Studies	2,199	0	2,199
Patel College of Global Sustainability	0	146	146
Taneja College of Pharmacy	0	404	404
Total	36,852	11,156	48,008

**Honors College student headcount included with college of degree major.*

Enrollment Data as of Drop/Add Fall 2021



ACADEMIC *profile*

DEGREES OFFERED

2020/21

	TOTAL
Bachelor's	90
Master's	105
Ed Specialists (EdS)	2
Research Doctoral	45
Professional Doctoral	4
TOTAL	246

DEGREES AWARDED

2020/21

	TOTAL
Bachelor's	10,333
Master's	3,539
Ed Specialists (EdS)	15
Research Doctoral	381
Professional Doctoral	336
TOTAL	14,604

ACCREDITATION

The University of South Florida is accredited by the Southern Association of Colleges and Schools Commission on Colleges (SACSCOC) to award associate, baccalaureate, masters, specialist, and doctoral degrees. Questions about the accreditation of the University of South Florida may be directed in writing to the Southern Association of Colleges and Schools Commission on Colleges at 1866 Southern Lane, Decatur, GA 30033-4097, by calling (404) 679-4500, or by using information available on SACSCOC's website (www.sacscoc.org).

INSTRUCTIONAL QUALITY *factors*

	TOTAL
Student:Faculty Ratio (IPEDS, fall 2020)	21.8
Freshman Retention Rate (IPEDS Methodology) (full-time students, summer/fall 19 to fall 20)*	92%
Academic Progress Rate (Performance Based Funding metric)(full-time students, 2.0 GPA +, summer/fall 19 to fall 20)*	89.9%
4-year Graduation Rate, FTIC (Performance Based Funding metric) (2016 FTIC cohort, full-time only)	60.9%
4-year Graduation Rate, Pell Recipient (2016 FTIC cohort, full-time only)	61%
6-year graduation Rate (IPEDS Methodology) (2014 FTIC cohort)*	73.1%
3-year Graduation Rate, AA Transfers (2017 FCS AA Transfer cohort)	63.0%
Endowed Chairs	59
Endowed Professorships	42
Distinguished University Professors	90

**Rates are not official IPEDS data and is based on internally calculated data.*





The USF Libraries are comprised of the Tampa campus library, St. Petersburg campus library (Nelson Poynter Memorial Library), Libraries Services at the Sarasota-Manatee campus, and USF Health Libraries (Hinks and Elaine Shimberg Health Sciences Library and Florida Blue Health Knowledge Exchange).

USF LIBRARY (2020/21)

Volumes Held	2,783,145
Serials	104,509
Databases	948
Collections' Expenditures	\$9,262,911

FACULTY AND STAFF PROFILE EMPLOYEES 2020/21

(REFLECTS ALL APPOINTMENTS)

TOTAL

	TOTAL
Instructional Faculty	2,143
full-time	2,024
part-time	119
Other Faculty	469
full-time	439
part-time	30
Adjuncts (part-time only)	1,508
Graduate Assistants (part-time only)	2,051
Administrative	3,148
full-time	3,099
part-time	49
University Support Personnel	1,893
full-time	1,863
part-time	30
Other	1,413
full-time	466
part-time	947
Student Assistants (part-time only)	3,053
TOTAL	15,678



UNIVERSITY *research and finances*

USF reached
**\$354 MILLION IN
TOTAL RESEARCH
EXPENDITURES**
in fiscal year 2019/20

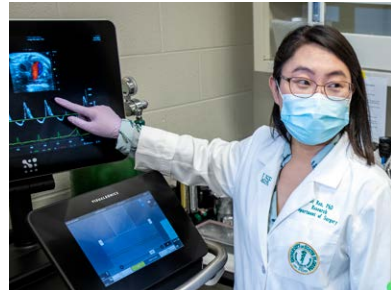
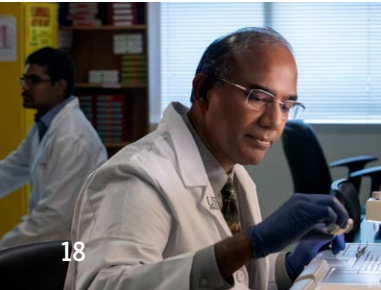
National Science Foundation HERD Survey

8th IN THE NATION
among public universities and
15th WORLDWIDE
among all universities for granted U.S. patents

Intellectual Property Owners Association/NAI (2020)

**TOP
10**

among public universities for
U.S. patents granted for
the 9th consecutive year



4th WORLDWIDE

for organizations with the most Fellows of the American Association for the Advancement of Science (AAAS) named in 2020—a rank USF has held for the past six years

As of 2020 USF has a total of
81 AAAS FELLOWS
among its faculty

82

USF student research engagements were supported by the Florida High Tech Corridor Council Matching Grants Program in 2021.

USF's innovation and economic development efforts generate more than

\$582 MILLION

in statewide impact each year,

\$71 MILLION

in tax revenue to local, state, and federal coffers, and sustain more than

4,000 JOBS

*Washington Economics Group,
a leading national firm (2019 analysis)*



FINANCIAL RESOURCES

Endowment (2020/2021)	\$692.7 M
Total Gifts & Commitments (2020/2021)	\$110,331,089
Licensing Revenue (2020/2021)	\$2,256,524.47
TOTAL OPERATING BUDGET (2021/2022)*	\$2,014,314,119
Education & General	\$722,462,831
Auxiliary Enterprises	\$230,030,607
Contracts & Grants	\$558,170,903
Local Funds **	\$503,649,778

*The Operating Budget presented here excludes USF Health expenditures for Self-Insurance and the Faculty Practice Plan.

*This presentation of the 2021-22 Operating Budget also excludes Non-Operating Transfers pertaining to all funding sources.

**Includes Financial Aid, Student Activity & Service Fees, Technology Fees, Green Fees, Intercollegiate Athletics, and Concessions.

RESEARCH FUNDING AND PRODUCTIVITY

Total Research Expenditures (2019/20)	\$354 M
Federal Research Expenditures (2019/20)	\$164 M
Postdoctoral Appointees (Fall 2020)	292
U.S. Patents Issued (2020)	130



FULL-TIME EQUIVALENCIES 2020/21

FTE Federal (Gross)	44,444
Undergraduate	35,596
Graduate	8,848
FTE Federal (Fundable)	42,845
Undergraduate	34,873
Graduate	7,972

TUITION & FEES, 2021/22

	FLORIDA RESIDENT	NON-FLORIDA RESIDENT
Cost per Credit Hour**		
Undergraduate Courses	213.65	577.47
Graduate Courses	434.51	880.25

** Based on 30 credit hours for undergraduates, 24 credit hours for graduates

ESTIMATED FINANCIAL AID AWARDS 2020/21

Scholarships	\$124,139,599.41
Grants	\$142,253,348.86
Waivers	\$66,745,980.53
Loans	\$178,182,183.91
Work Study	\$1,799,838.92
Total	\$513,120,951.63

ESTIMATED COST OF ATTENDANCE, 2021/22

LIVING ON CAMPUS

	FLORIDA RESIDENT	NON-FLORIDA RESIDENT
Undergraduate Student		
Full-time Tuition***	\$6,410	\$17,324
Housing/Meals	\$12,568	\$12,568
Books/Supplies	\$1,100	\$1,100
Other Expenses	\$4,100	\$4,100
Graduate Student		
Full-time Tuition***	\$7,840	\$15,864
Housing/Meals	\$13,140	\$13,140
Books/Supplies	\$900	\$900
Other Expenses	\$4,100	\$4,100

*** Based on 30 credit hours for undergraduates, 18 credit hours for graduates.

UNIVERSITY *resources*



USF is featured in

PRINCETON REVIEW'S GUIDE TO GREEN COLLEGES

as an institution of higher education that demonstrates a strong commitment to sustainability in its academic offerings, campus infrastructure, activities, and career preparation (2021)



USF RANKS 55

for sustainability
among public
U.S. institutions
by Sierra Club 2020



USF was recognized as a

TOP PERFORMER IN THE 2020 SUSTAINABLE CAMPUS INDEX

as an institution of higher education dedicated to energy reduction and the development and use of clean and renewable energy sources



The Princeton Review
ranked USF in the

**TOP 50 BEST
VALUE COLLEGE
IN 2021**

for providing students
with high-quality education
and career readiness at
an affordable cost





FACILITIES *and space*

USF TOTAL

294

Buildings

12,082,758

Total Sq. Ft.

1,646

Acres

TAMPA CAMPUS

254

Buildings

10,425,141

Total Sq. Ft.

1,562

Acres

ST. PETERSBURG CAMPUS

30

Buildings

1,483,908

Total Sq. Ft.

52

Acres

SARASOTA-MANATEE CAMPUS

10

Buildings

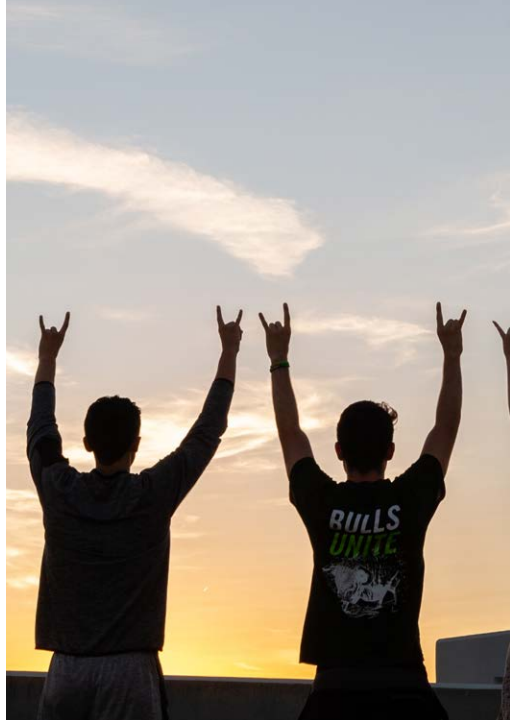
173,709

Total Sq. Ft.

32

Acres

The University of South Florida is a high-impact global research university dedicated to student success. Over the past 10 years, no other public university in the country has risen faster in U.S. News and World Report's national university rankings than USF. Serving more than 49,000 students on campuses in Tampa, St. Petersburg, and Sarasota-Manatee, USF is designated as a Preeminent State Research University by the Florida Board of Governors, placing it in the most elite category among the state's 12 public universities. USF has earned widespread national recognition for its success in graduating underrepresented minority and limited-income students, at rates equal to or higher than white and higher-income students. USF is a member of the American Athletic Conference. Learn more at www.usf.edu.





UNIVERSITY OF SOUTH FLORIDA

pocket fact book

2021-2022

Office of the USF Provost and Executive Vice President
4202 E. Fowler Ave., CGS 401 Tampa, FL 33620-4401
www.usf.edu/provost

Produced by the USF Office of Decision Support
www.usf.edu/ods



UNIVERSITY of
SOUTH FLORIDA