

AMERICA'S FASTEST-RISING UNIVERSITY

*Now Ranked #44 Among Public Universities
in U.S. News & World Report*



UNIVERSITY of
SOUTH FLORIDA



pocket fact book

2019-2020

USF FACTS

The University of South Florida comprises three member campuses, each with separate classifications assigned by the Carnegie Classification of Institutions of Higher Education:

- The Tampa campus is classified as Doctoral Universities: Highest Research Activity.
- The St. Petersburg campus is classified as Master's Colleges & Universities: Medium Programs.
- The Sarasota-Manatee campus is classified as Master's Colleges & Universities: Small Programs.

About the cover: The University of South Florida is rapidly rising on the list of best public universities in America, now No. 44, according to new rankings released by *U.S. News and World Report*. The No. 44 ranking is 14 spots higher than last year and represents USF's highest position ever on the *U.S. News* list of best universities.

ONE UNIVERSITY GEOGRAPHICALLY DISTRIBUTED

● TAMPA CAMPUS

● ST. PETERSBURG CAMPUS

● SARASOTA-MANATEE CAMPUS



UNIVERSITY of
SOUTH FLORIDA



Zimmerman



Muma



Carrere



Deas



Goforth



Griffin



Horton



Michael



Mullis



Ramil



Shinn



Tokarz



Watkins

USF BOARD OF TRUSTEES

Jordan B. Zimmerman, Chair

Leslie Muma, Vice Chair

Michael Carrere

Britney Deas

Stephanie E. Goforth

Michael E. Griffin

Oscar Horton

Deanna Michael

Harold W. Mullis

John B. Ramil

Byron E. Shinn

Charles Tokarz

Nancy H. Watkins

The USF Board of Trustees is responsible for cost-effective policy decisions appropriate to the university mission and the implementation and maintenance of high-quality education programs within the laws and rules of the state. Campus Boards for St. Petersburg and Sarasota-Manatee are appointed by the USF Board of Trustees. The USF Board of Trustees was created in 2001 by the Florida legislature.

The 13 trustees include distinguished figures in accounting, banking, business, education, law, technology, philanthropy, and public policy leadership. Six trustees are appointed by Florida's governor, and five trustees are appointed by the Florida Board of Governors. The USF Faculty Council President and USF Student Advisory Council President also serve as trustees. The USF President serves as Corporate Secretary.

USF ADMINISTRATION

Steven C. Currall

President

Ralph Wilcox

Provost and Executive Vice President

David Lechner

Senior Vice President for Business and Financial Strategy

Charles Lockwood

Senior Vice President for USF Health

Paul R. Sanberg

Senior Vice President for Research, Innovation & Knowledge Enterprise

Noreen Segrest

Interim Senior Vice President for University Advancement

Martin Tadlock

Regional Chancellor, St. Petersburg campus

Karen Holbrook

Regional Chancellor, Sarasota-Manatee campus

USF STUDENTS *at a glance*



Fall 2019 Freshman
academic profile posts an average
SAT SCORE OF 1286
and a high school
GPA OF 4.13



2018-19 Student body of
50,927 STUDENTS
representing more than
**141 DIFFERENT
COUNTRIES**



**#4 IN
STUDENT SUCCESS**
among 1,100 public research
and doctoral universities
2018 Eduventures Student Success Ratings



The Morsani College
of Medicine had an
incoming medical
student cohort

with an average
**MCAT SCORE
OF 515,**

placing it among the
**TOP OF ALL MEDICAL
SCHOOLS IN THE COUNTRY**



84

national scholarship and fellowship student awardees during the 2018-2019 academic year including Boren, Fulbright, Gilman, and Goldwater



Tampa campus

#1 FOR GREATEST IMPROVEMENT

in 6-year graduation rates among 4-year public colleges and universities

The Chronicle of Higher Education (2017)



Tampa campus

“TOP PRODUCER”

of Peace Corps Volunteers, ranking

3RD IN THE NATION

(among Graduate Schools) for Peace Corps Volunteers in 2019



#6 IN THE NATION

for eliminating the completion gap between black and white students,

#4 IN THE NATION

for Latino student success, and

#1 IN FLORIDA

for both

The Education Trust (2017)



CAMPUS *enrollment*

	USF TOTAL		TAMPA CAMPUS		ST. PETERSBURG CAMPUS		SARASOTA-MANATEE CAMPUS	
Undergraduate	37,350	73.3%	31,823	71.9%	3,818	85.7%	1,709	76.9%
male	16,359	43.8%	14,337	45.1%	1,378	36.1%	644	37.7%
female	20,989	56.2%	17,485	54.9%	2,440	63.9%	1,064	62.3%
not reported	2	0.0%	1	0.0%	0	0.0%	1	0.1%
full-time	28,723	76.9%	25,200	79.2%	2,584	67.7%	939	54.9%
part-time	8,627	23.1%	6,623	20.8%	1,234	32.3%	770	45.1%
Graduate	11,358	22.3%	10,709	24.2%	510	11.4%	139	6.3%
male	4,579	40.3%	4,317	40.3%	209	41.0%	53	38.1%
female	6,762	59.5%	6,375	59.5%	301	59.0%	86	61.9%
not reported	17	0.1%	17	0.2%	0	0.0%	0	0.0%
full-time	6,737	59.3%	6,591	61.5%	106	20.8%	40	28.8%
part-time	4,621	40.7%	4,118	38.5%	404	79.2%	99	71.2%
Doctor of Medicine	719	1.4%	719	1.6%	0	0.0%	0	0.0%
male	370	51.5%	370	51.5%	0	0.0%	0	0.0%
female	342	47.6%	342	47.6%	0	0.0%	0	0.0%
not reported	7	1.0%	7	1.0%	0	0.0%	0	0.0%
full-time	719	100.0%	719	100.0%	0	0.0%	0	0.0%
part-time	0	0.0%	0	0.0%	0	0.0%	0	0.0%
Non-Degree seeking	2,219	4.4%	1,717	3.9%	127	2.9%	375	16.9%
male	892	40.2%	687	40.0%	49	38.6%	156	41.6%
female	1,323	59.6%	1,026	59.8%	78	61.4%	219	58.4%
not reported	4	0.2%	4	0.2%	0	0.0%	0	0.0%
full-time	546	24.6%	539	31.4%	3	2.4%	4	1.1%
part-time	1,673	75.4%	1,178	68.6%	124	97.6%	371	98.9%
TOTAL	50,927	100.0%	44,249	100.0%	4,455	100.0%	2,223	100.0%
male	21,830	42.9%	19,341	43.7%	1,636	36.7%	853	38.4%
female	29,074	57.1%	24,886	56.2%	2,819	63.3%	1,369	61.6%
not reported	23	0.0%	22	0.0%	0	0.0%	1	0.0%
full-time	36,006	70.7%	32,330	73.1%	2,693	60.4%	983	44.2%
part-time	14,921	29.3%	11,919	26.9%	1,762	39.6%	1,240	55.8%

FIRST TIME IN COLLEGE (FTIC) *enrollment*



NEW STUDENT PROFILE

	USF TOTAL	TAMPA CAMPUS	ST. PETERSBURG CAMPUS	SARASOTA-MANATEE CAMPUS
Number of new FTICs, fall 2019	3,773	3,539	178	56
Average high school GPA	4.13	4.13	4.12	4.14
Average SAT	1286	1286	1255	1267
Mid-range SAT	1220 - 1340	1220 - 1340	1190 - 1310	1220 - 1310
Average ACT	29	29	28	28
Mid-range ACT	26 - 30	26 - 30	26 - 29	26 - 29
Top 10% of high school class	42%	42%	34%	38%
Florida residents receiving Bright Futures scholarship	78.9%	n/a	n/a	n/a
Non-White*	43%	45%	23%	28%
Reside in on-campus housing (fall)	2,391 (63.4%)	2,284 (64.5%)	107 (60.1%)	n/a
National Merit Scholars	11	11	0	1
National Achievement Scholars	0	0	0	0
National Hispanic Scholars	39	39	0	0
Florida residents	3,154	2,936	169	49
Out-of-state students	619	603	9	7
Florida counties represented	52	52	25	6
States represented	41	41	13	5
Countries represented**	65	64	2	5
Florida high schools represented	442	433	82	20

*Does not include non-resident aliens and race not-reported

**Total includes US permanent residents and citizens born outside the US
Enrollment Data as of Drop/Add Fall 2019.



TRANSFER & GRADUATE *enrollment*

NEW STUDENT PROFILE

TRANSFER STUDENTS	USF TOTAL	TAMPA CAMPUS	ST. PETERSBURG CAMPUS	SARASOTA-MANATEE CAMPUS
Number of new transfer students*	4,138	3,299	550	289
New transfer students from the Florida College System	2,900	2,306	382	212
Other new transfer students	1,238	993	168	77
All new transfer students who are non-White**	47%	50%	33%	37%
Highest number of transfer students are from:	Hillsborough Community College	Hillsborough Community College	St. Petersburg College	State College of Florida, Manatee-Sarasota

*Does not include Post Baccalaureate Degree Seeking Students

**Does not include non-resident aliens and race not reported

GRADUATE STUDENTS

New Graduate Students	3,435	3,280	126	29
Master's & Education Specialist	2,682	2,527	126	29
Doctoral Research	366	366	0	0
Doctoral Professional	387	387	0	0

* Does not include Post Baccalaureate Degree Seeking Students

** Does not include Non-Resident Aliens and Race not-reported

Enrollment Data as of Drop/Add Fall 2019

STUDENT DIVERSITY *profile*

	USF TOTAL		TAMPA CAMPUS		ST. PETERSBURG CAMPUS		SARASOTA-MANATEE CAMPUS	
African American	4,599	10.0%	4,143	10.5%	330	7.5%	126	5.8%
male	1,656	36.0%	1,500	36.2%	109	33.0%	47	37.3%
female	2,942	64.0%	2,642	63.8%	221	67.0%	79	62.7%
not reported	1	0.0%	1	0.0%	0	0.0%	0	0.0%
American Indian	87	0.2%	68	0.2%	14	0.3%	5	0.2%
male	44	50.6%	33	48.5%	7	50.0%	4	80.0%
female	43	49.4%	35	51.5%	7	50.0%	1	20.0%
not reported	0	0.0%	0	0.0%	0	0.0%	0	0.0%
Asian	3,428	7.4%	3,171	8.0%	177	4.0%	80	3.7%
male	1,485	43.3%	1,382	43.6%	67	37.9%	36	45.0%
female	1,941	56.6%	1,787	56.4%	110	62.1%	44	55.0%
not reported	2	0.1%	2	0.1%	0	0.0%	0	0.0%
Hispanic	9,559	20.7%	8,382	21.2%	769	17.4%	408	18.8%
male	3,818	39.9%	3,459	41.3%	238	30.9%	121	29.7%
female	5,736	60.0%	4,919	58.7%	531	69.1%	286	70.1%
not reported	5	0.1%	4	0.0%	0	0.0%	1	0.2%
Native Hawaiian or Other Pacific Islander	74	0.2%	67	0.2%	7	0.2%	0	0.0%
male	34	45.9%	30	44.8%	4	57.1%	0	0.0%
female	40	54.1%	37	55.2%	3	42.9%	0	0.0%
not reported	0	0.0%	0	0.0%	0	0.0%	0	0.0%
Two or More Races	1,806	3.9%	1,588	4.0%	156	3.5%	62	2.9%
male	697	38.6%	616	38.8%	57	36.5%	24	38.7%
female	1,109	61.4%	972	61.2%	99	63.5%	38	61.3%
not reported	0	0.0%	0	0.0%	0	0.0%	0	0.0%

	USF TOTAL		TAMPA CAMPUS		ST. PETERSBURG CAMPUS		SARASOTA-MANATEE CAMPUS	
White	24,849	53.8%	20,612	52.0%	2,825	64.0%	1,412	65.1%
male	10,537	42.4%	8,878	43.1%	1,082	38.3%	577	40.9%
female	14,301	57.6%	11,723	56.9%	1,743	61.7%	835	59.1%
not reported	11	0.0%	11	0.1%	0	0.0%	0	0.0%
Race-Not Reported	1,814	3.9%	1,598	4.0%	139	3.1%	77	3.5%
male	766	42.2%	684	42.8%	55	39.6%	27	35.1%
female	1,044	57.6%	910	56.9%	84	60.4%	50	64.9%
not reported	4	0.2%	4	0.3%	0	0.0%	0	0.0%
TOTAL	46,216	100.0%	39,629	100.0%	4,417	100.0%	2,170	100.0%
male	19,037	41.2%	16,582	41.8%	1,619	36.7%	836	38.5%
female	27,156	58.8%	23,025	58.1%	2,798	63.3%	1,333	61.4%
not reported	23	0.0%	22	0.1%	0	0.0%	1	0.0%

Student Diversity Profile reflects federal race/ethnicity categories only and does not include international students or non-resident aliens. Total USF student enrollment can be found on page 9.

INTERNATIONAL

	USF TOTAL	TAMPA CAMPUS	ST. PETERSBURG CAMPUS	SARASOTA-MANATEE CAMPUS
Undergraduate	2,228	2,159	27	42
Graduate	1,999	1,983	9	7
Non-Degree Seeking	484	478	2	4
Total International Students	4,711 (9%)	4,620 (10%)	38 (1%)	53 (2%)

All Student Diversity Profile data as of Drop/Add Fall 2019

UNIVERSITY *academics*

Tampa campus graduate level programs continue to be **ranked among the best**. USF graduate programs in the top 50 include: (academic value)

- | | |
|--|---|
| #16 Public Health | #41 Nursing: Doctor of Nursing Practice |
| #17 Audiology | #43 Health Care Management |
| #22 Criminology | #48 Environmental/Environmental Health Engineering |
| #27 Rehabilitation Counseling | #48 Industrial/Manufacturing Engineering |
| #28 Library and Information Studies | #50 Clinical Psychology |
| #41 Nursing: Master's | |

2020 U.S. News and World Report (USNWR) Graduate School Rankings

St. Petersburg campus' undergraduate programs were ranked in the **TOP 25 FOR ALL PUBLIC SOUTHERN REGIONAL UNIVERSITIES**

U.S. News and World Report (USNWR), 2019



Recipient of the **2019 American Council on Education/Fidelity Investments Award for Institutional Transformation**

#1

in the nation for **TOP PRODUCER OF FULBRIGHT SCHOLARS**, with 12 faculty scholars for the 2018-2019 academic year
The Chronicle of Higher Education

31

among U.S. Public institutions (marking the seventh consecutive year ranked in the top 50)
Times Higher Education's 2020 World University Rankings

TAMPA CAMPUS RANKS AMONG THE

TOP 40

of the best U.S. public colleges and universities

&

TOP 300

of the best colleges and universities in the world

Academic Ranking of World Universities (ARWU), 2019

USF RANKS AS THE

**TOP UNIVERSITY IN FLORIDA,
FIFTH BEST IN THE NATION and
73RD AMONG ALL UNIVERSITIES WORLDWIDE**

2019 Times Higher Education (THE) University Impact Rankings

USF RANKS in the
**TOP 250 BEST
UNIVERSITIES
IN THE WORLD**

*Times Higher Education (THE)
World University Rankings, 2020*



USF is the winner of the
Institute of International
Education's 2019 **Heiskell
Award for Access and Equity**

USF RANKED

#6 among public U.S. universities and
#38 worldwide among all universities
established in the "Golden Age" (1945-1967)
Times Higher Education (THE), 2019

#44 among public universities and
#104 among all public and private universities
*2020 U.S. News and World Report (USNWR)
National University Rankings*

1st in Florida and
2nd among all U.S. institutions
2019 Military Times Best: Colleges

USF RANKS AMONG THE

TOP 50 universities worldwide and
4th among U.S. public institutions
for reducing inequalities
Times Higher Education (THE), 2019

DEGREES, PROGRAMS, *and accreditation*

DEGREES AWARDED 2018/19

	USF TOTAL	TAMPA CAMPUS	ST. PETERSBURG CAMPUS	SARASOTA-MANATEE CAMPUS
Bachelor's	10,109	8,640	939	530
Master's	3,513	3,249	220	44
Ed Specialists (EdS)	15	15	-	-
Research Doctoral	372	372	-	-
Professional Doctoral	378	378	-	-
TOTAL	14,387	12,654	1,159	574

DEGREES OFFERED 2019/20*

	USF TOTAL
Bachelor's	85
Master's	107
Ed Specialists (EdS)	2
Research Doctoral	44
Professional Doctoral	4
TOTAL	242

**Degree programs reflect an unduplicated count of programs offered across the USF campuses as of the Fall 2019 drop/add benchmark.*

ACCREDITATION

The University of South Florida (which includes USF Health, which is part of the research-intensive campus located in Tampa) is accredited by the Southern Association of Colleges and Schools Commission on Colleges (SACSCOC) to award degrees at the baccalaureate, master's, specialist and doctoral levels. The St. Petersburg and Sarasota-Manatee campuses are accredited by the Southern Association of Colleges and Schools Commission on Colleges (SACSCOC) to award degrees at the baccalaureate and master's levels. Contact the Commission on Colleges at 1866 Southern Lane, Decatur, Georgia 30033-4097 or call 407-679-4500 for questions about the accreditation of USF.

MUMA COLLEGE OF BUSINESS





The University of South Florida has five library facilities: the Tampa Library, the Nelson Poynter Memorial Library at St. Petersburg, the Jane Bancroft Cook Library at Sarasota-Manatee, the Hinks and Elaine Shimberg Health Sciences Library, and the Louis de la Parte Florida Mental Health Institute (FMHI) Research Library.

USF LIBRARY (2018/19)

USF TOTAL

Volumes Held	2,684,701
Serials	91,633
Databases	941
Collections Expenditures	\$10,570,133

INSTRUCTIONAL QUALITY FACTORS	USF TOTAL	TAMPA CAMPUS	ST. PETERSBURG CAMPUS	SARASOTA-MANATEE CAMPUS
Student:Faculty Ratio (IPEDS, fall 2018)	21	22	18	12
Freshman Retention Rate (IPEDS Methodology, full-time students, summer/fall 2017 to fall 2018)*	89%	91%	74%	89%
Academic Progress Rate (Performance Based Funding metric, full-time students, 2.0 GPA+, summer/fall 2017 to fall 2018)	86.6%	88.7%	71.9%	84.0%
4-year Graduation Rate, FTIC (Performance Based Funding metric, 2014 FTIC cohort, full-time only)	58.6%	60.5%	32.1%	31.10%
4-year Graduation Rate, AA Transfers (2014 AA Transfer cohort)	67%	71%	57%	55%
6-Year Graduation Rate, FTIC (IPEDS methodology, 2012 FTIC cohort, full- and part-time only)*	71.2%	73.1%	33.3%	N/A
Endowed Chairs	60	55	3	2
Endowed Professorships	32	28	4	N/A
Distinguished University Professors	84	N/A	N/A	N/A

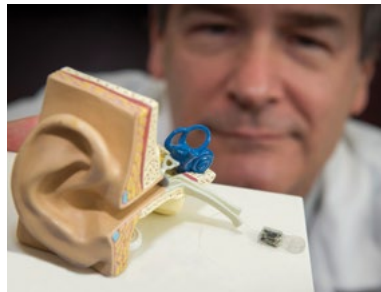
**Rates are not official IPEDS data and are based on internally calculated data.*

UNIVERSITY *research and finances*

USF reached
**\$592 MILLION IN TOTAL
RESEARCH EXPENDITURES**
in fiscal year 2017/18
National Science Foundation HERD Survey

1st IN FLORIDA,
7th IN THE NATION
among public universities and
16th WORLDWIDE
for granted U.S. patents among all universities
Intellectual Property Owners Association/NAI (2018)

**TOP
10**
among public universities
for U.S. patents granted
for the past nine years
(2010-2018)



4th WORLDWIDE

for organizations with the most Fellows of the American Association
for the Advancement of Science (AAAS) named in 2018

A RANK USF HAS HELD FOR THE PAST FOUR YEARS

As of 2018 USF has a total of
65 AAAS FELLOWS
among its faculty

#19

TAMPA CAMPUS WAS RANKED
among the “Best Universities
for Technology Transfer”
Milken Institute (2017)

USF’s innovation and economic
development efforts generate more than

\$582 MILLION

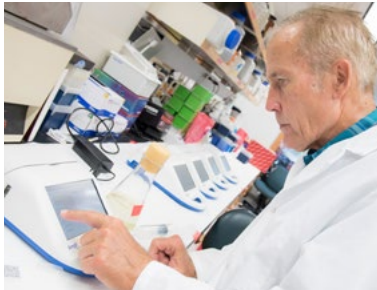
in statewide impact each year,

\$71 MILLION

in tax revenue to local, state, and federal
coffers, and sustain more than

4,000 JOBS

*Washington Economics Group,
a leading national firm (2019 analysis)*



FINANCIAL RESOURCES

	USF TOTAL	TAMPA CAMPUS	ST. PETERSBURG CAMPUS	SARASOTA-MANATEE CAMPUS
Endowment (2018/19)	\$513,544,652	n/a	n/a	n/a
Total Gifts & Commitments (2018/19)	\$111,114,271	n/a	n/a	n/a
Licensing Revenue (2018/19)	\$3.69M	n/a	n/a	n/a
Total Operating Budget (2019/20)*	\$1,855,802,312	\$1,739,849,256	\$82,437,829	\$33,515,227
Education & General	\$717,862,777	\$631,887,971	\$56,354,159	\$29,620,647
Auxiliary Enterprises	\$226,187,384	\$209,406,909	\$14,626,415	\$2,154,060
Contracts & Grants	\$424,881,304	\$417,407,304	\$7,183,000	\$291,000
Local Funds **	\$486,870,847	\$481,147,072	\$4,274,255	\$1,449,520

* The Operating Budget presented here excludes USF Health expenditures for Self-Insurance and the Faculty Practice Plan, as well as Non-Operating Transfers pertaining to all funding sources.

**Includes Financial Aid (also Federal Stafford Loans), Student Activity & Service Fees, Technology Fees, Green Fees, Intercollegiate Athletics, and Concessions.

RESEARCH FUNDING AND PRODUCTIVITY

USF TOTAL

Total Research Expenditures (2017/18)	\$592M
Federal Research Expenditures (2017/18)	\$267M
Post Doctoral Appointees (Fall 2018)	307
U.S. Patents issued (2018)	101



FULL TIME EQUIVALENCIES (FTE, FUNDABLE), 2018/19

	USF TOTAL	TAMPA CAMPUS	ST. PETERSBURG CAMPUS	SARASOTA-MANATEE CAMPUS
State FTE	31,550	26,959	3,079	1,512
Undergraduate	25,515	21,291	2,800	1,424
Graduate	6,036	5,668	279	89
Federal (IPEDS) FTE	42,067	35,945	4,106	2,016
Undergraduate	34,020	28,387	3,734	1,898
Graduate	8,047	7,557	372	118

ESTIMATED COST OF ATTENDANCE, 2019/20 LIVING ON CAMPUS - USF TOTAL

	FLORIDA RESIDENT	NON-FLORIDA RESIDENT
Undergraduate Student		
Full-Time Tuition*	\$6,410	\$17,324
Housing/Meals	\$11,836	\$11,836
Books/Supplies	\$1,100	\$1,100
Other Expenses	\$4,100	\$4,100
Graduate Student		
Full-Time Tuition*	\$7,840	\$15,864
Housing/Meals	\$12,858	\$12,858
Books/Supplies	\$900	\$900
Other Expenses	\$4,100	\$4,100

ESTIMATED FINANCIAL AID AWARDS 2018/19 USF TOTAL

Scholarships	\$90,990,443.51
Grants	\$123,015,151.73
Waivers	\$62,510,789.01
Loans	\$225,353,669.21
Work Study	\$2,590,107.65
Total	\$504,460,161.11

* Tuition and fees vary across the USF campuses. Please refer to the per-credit-hour tuition and fees for each institution on pages 31, 33, and 35.

UNIVERSITY *resources*



USF is featured in

PRINCETON REVIEW'S GUIDE TO 399 GREEN COLLEGES: 2018 EDITION

as an institution of higher education that demonstrates a strong commitment to sustainability in its academic offerings, campus infrastructure, activities, and career preparation



Tampa campus ranks among the

TOP 60 COOLEST SCHOOLS

for sustainability among public institutions by Sierra Club 2019



USF was recognized as a

TOP PERFORMER IN THE 2019 SUSTAINABLE CAMPUS INDEX

as an institution of higher education dedicated to energy reduction and development and use of clean and renewable energy sources



MENTAL SCIENCES



FACILITIES *and space*

USF TOTAL

284 Buildings

11,976,438 Total Sq. Ft.

1,646 Acres

TAMPA CAMPUS

244 Buildings

10,449,686 Total Sq. Ft.

1,562 Acres

ST. PETERSBURG CAMPUS

30 Buildings

1,353,043 Total Sq. Ft.

52 Acres

SARASOTA-MANATEE CAMPUS

10 Buildings

173,709 Total Sq. Ft.

32 Acres

**FACULTY AND STAFF PROFILE
EMPLOYEES 2018/19**
(REFLECTS ALL APPOINTMENTS)

	USF TOTAL	TAMPA CAMPUS	ST. PETERSBURG CAMPUS	SARASOTA-MANATEE CAMPUS
Instructional Faculty	2,126	1,895	141	90
Full Time	2,023	1,793	141	89
Part Time	103	102	0	1
Other Faculty	485	458	21	6
Full Time	452	425	21	6
Part Time	33	33	0	0
Adjuncts (Part-Time Appointments Only)	1,483	1,289	126	68
Graduate Assistants (Part-Time Appointments Only)	2,197	2,145	48	4
Administrative	2,997	2,752	177	68
Full Time	2,966	2,722	177	67
Part Time	31	30	0	1
University Support Personnel	1,945	1,766	141	38
Full Time	1,918	1,742	141	35
Part Time	27	24	0	3
Other	1,568	1,451	89	28
Full Time	520	501	15	4
Part Time	1,048	950	74	24
Student Assistants (Part-Time Appointments Only)	3,509	3,080	346	83
TOTAL	16,310	14,836	1,089	385

Designated as a “Preeminent State Research University,” the Tampa campus is one of the nation’s top public research university campuses and one of only 56 public research university campuses classified by the Carnegie Foundation as both a Doctoral University with “Highest Research Activity” and as a “Community Engaged” institution by the Carnegie Classification of Institutions of Higher Education.

The University of South Florida is America’s fastest-rising university, with the Tampa campus now ranked #44 among public universities in *U.S. News & World Report* and placed among the top 50 for six different national rankings including; *Times Higher Education, Academic Ranking World Universities* (#38), *Kiplinger’s Best Public College Value: In-State* (#39), *Top American Research Universities: Public US* (#26-50), and *Washington Monthly* (#50).

4202 E. Fowler Ave., Tampa, FL 33620 | 813-974-2011 | usf.edu

HEADCOUNT BY COLLEGE*

	UNDERGRADUATE	GRADUATE	TOTAL
Arts & Sciences	14,158	1,713	15,871
Behavioral & Community Sciences	1,660	912	2,572
Business	4,640	1,292	5,932
Education	861	1,194	2,055
Engineering	5,184	1,088	6,272
Global Sustainability	0	158	158
Graduate Studies	0	230	230
Honors College**	0	0	0
Marine Science	0	86	86
Medicine	0	1,651	1,651
Nursing	1,423	951	2,374
Pharmacy	0	422	422
Public Health	1,408	789	2,197
The Arts	1,000	223	1,223
Undergraduate Studies	710	0	710
Undeclared	776	0	776
Total	31,820	10,709	42,529

*Only includes degree-seeking students

**Headcount included with college of degree major.

TUITION AND FEES 2019/20 COST PER CREDIT HOUR***

	FLORIDA RESIDENT	NON-FLORIDA RESIDENT
Undergraduate Courses	211.19	575.01
Graduate Courses	431.43	877.17

***Tuition and fees vary across the USF campuses. Please refer to the per-credit-hour tuition and fees for the other institutions on pages 33 and 35.

Headcount and Tuition as of Drop/Add Fall 2019



ST. PETERSBURG CAMPUS

The only residential public research university campus in Pinellas County, the St. Petersburg campus features small classes taught by award-winning faculty who challenge their students to excel through innovative approaches to learning and collaborative research opportunities. Located in downtown St. Petersburg, the St. Petersburg campus offers distinct opportunities for all students to engage with the community through internships, job-shadowing programs, and field-based experiences. The St. Petersburg campus is part of a select group of Master's Medium institutions that earned the highly prestigious Carnegie Classification for Community Engagement. In 2018-19, the St. Petersburg campus faculty was awarded more than \$6.2 million in research funds, an all-time high.

140 7th Ave. South, St. Petersburg, FL 33701 | 727-973-4873 | usfsp.edu

HEADCOUNT BY COLLEGE*

	UNDERGRADUATE	GRADUATE	TOTAL
Arts & Sciences	2,320	123	2,443
Business	969	292	1,261
Education	84	95	179
Undergraduate Studies	448	0	448
Total	3,821	510	4,331

*Only includes degree-seeking students

TUITION AND FEES 2019/20 COST PER CREDIT HOUR**

	FLORIDA RESIDENT	NON-FLORIDA RESIDENT
Undergraduate Courses	193.7	557.52
Graduate Courses	425.68	871.42

**Tuition and fees vary across the USF campuses. Please refer to the per-credit-hour tuition and fees for the other institutions on pages 31 and 35.

Headcount and Tuition as of Drop/Add Fall 2019

USFSP *campus facts*

- // The St. Petersburg campus made **The Princeton Review's "Guide to 399 Green Colleges."** The publication highlights colleges with the most exceptional commitment to sustainability based on academic offerings and career preparation for students.
- // In fall 2019, the St. Petersburg campus launched an **Accelerated Second Degree nursing program** in collaboration with USF Health's College of Nursing in Tampa to meet the workforce needs of the community.
- // The St. Petersburg campus introduced two new degree programs in 2019: **Sustainability Studies** and **Computational & Applied Mathematics**.
- // In April 2019, the St. Petersburg campus broke ground on a **new 375-bed residence hall** that will increase the number of students living on campus by nearly 70 percent. The new facility, which will also include a full-service dining hall, is scheduled to open in July 2020.



The Sarasota-Manatee campus is a student-centered, community-engaged, forward-thinking institution that empowers students to lead lives of impact. Located in the heart of Sarasota and Manatee counties, the Sarasota-Manatee campus provides high quality bachelor's and master's degrees and certificates in a personalized learning community that prepares students to think critically and creatively to meet the business and workforce needs of a growing community.

The Sarasota-Manatee campus has an enrollment of over 2,000 students who take day and evening classes on campus and online. The Sarasota-Manatee campus serves a variety of student populations, including recent high school graduates, transfer and graduate students, veterans, first-generation college students, and working professionals seeking new opportunities or executive education to advance their careers. With a student-to-faculty ratio of 13:1, many classes have fewer than 20 students, and professors know their students by name. The Sarasota-Manatee campus places an emphasis on helping students engage in hands-on experiential learning opportunities, including internships, research with expert faculty, and service-learning.

8350 N. Tamiami Trail, Sarasota, FL 34243 | 941-359-4200 | usfsm.edu

HEADCOUNT BY COLLEGE*

	UNDERGRADUATE	GRADUATE	TOTAL
Arts & Sciences	2	0	2
Business	573	72	645
Hospitality & Tourism Leadership	90	14	104
Liberal Arts & Social Sciences	416	53	469
Science & Mathematics	590	0	590
UG Student Advising	30	0	30
Undergraduate Studies	8	0	8
Total	1,709	139	1,848

*Only includes degree-seeking students

TUITION AND FEES 2019/20 COST PER CREDIT HOUR**

	FLORIDA RESIDENT	NON-FLORIDA RESIDENT
Undergraduate Courses	185.92	549.74
Graduate Courses	417.90	863.64

**Tuition and fees vary across the USF campuses. Please refer to the per-credit-hour tuition and fees for the other institutions on pages 31 and 33.

Headcount and Tuition as of Drop/Add Fall 2019

USFSM *campus facts*

- // The Sarasota-Manatee campus' offsite teaching labs – including Mote Marine Laboratory, the Culinary Innovation Laboratory at Lakewood Ranch, and the Teaching Hotel at the Resort at Longboat Key Club – give students **unique opportunities for hands on experience**.
- // The Sarasota-Manatee campus is a **member of the Cross College Alliance**, a group of five area colleges and universities that collaborate on programs and provide students with the ability to take classes at member institutions.
- // The Sarasota-Manatee campus welcomes its first cohort of **Accelerated Second Degree Nursing program** students in January 2020 and continues to expand its **Risk Management and Insurance program** to meet the industry's growing demands.

UNIVERSITY of
SOUTH FLORIDA

pocket fact book

2019-2020

Office of the USF Provost and Executive Vice President
4202 E. Fowler Ave., CGS 401 Tampa, FL 33620-4401
813-974-2154

Produced by the USF Office of Decision Support

