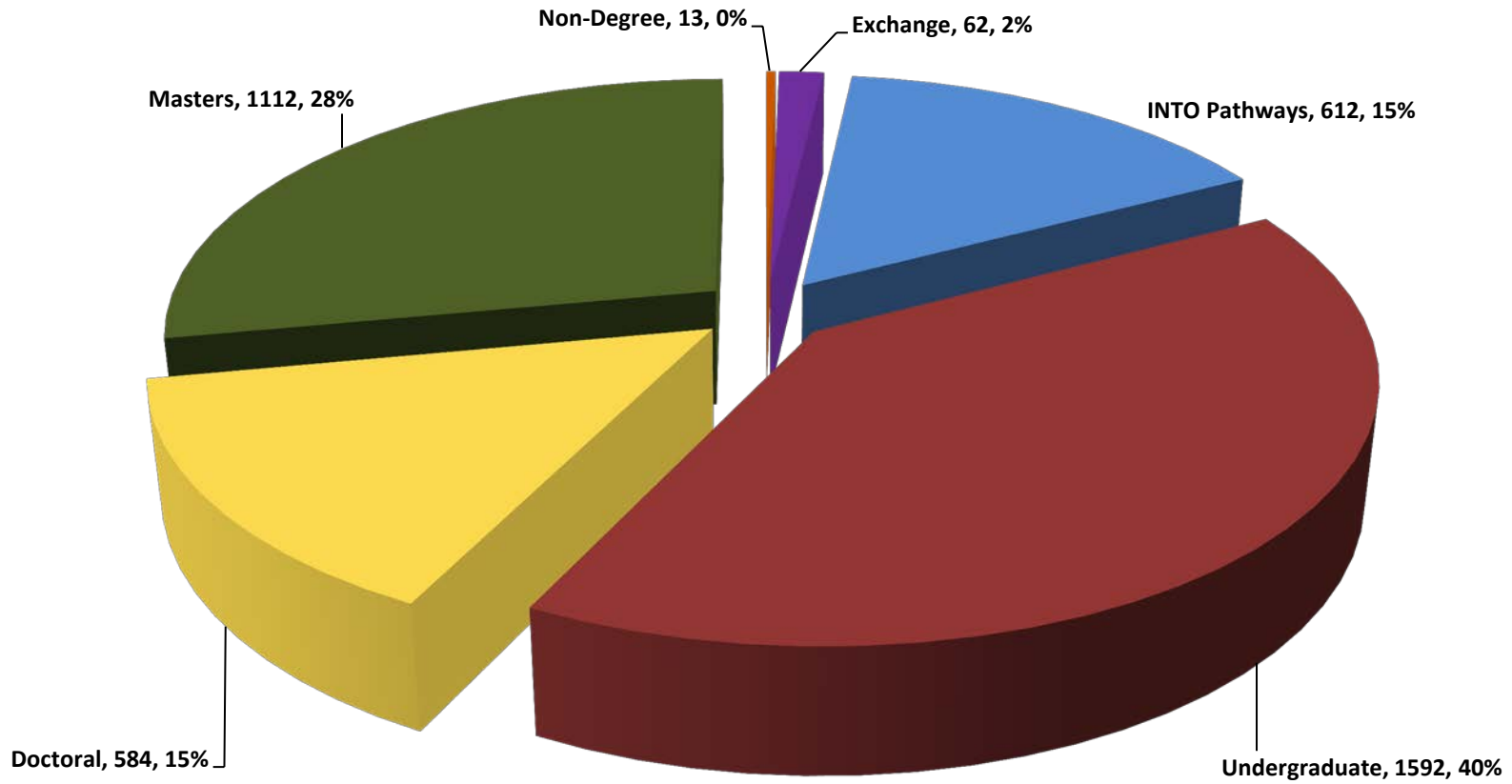


USF World
International Services
Fall 2015

USF International Students Per Academic Level



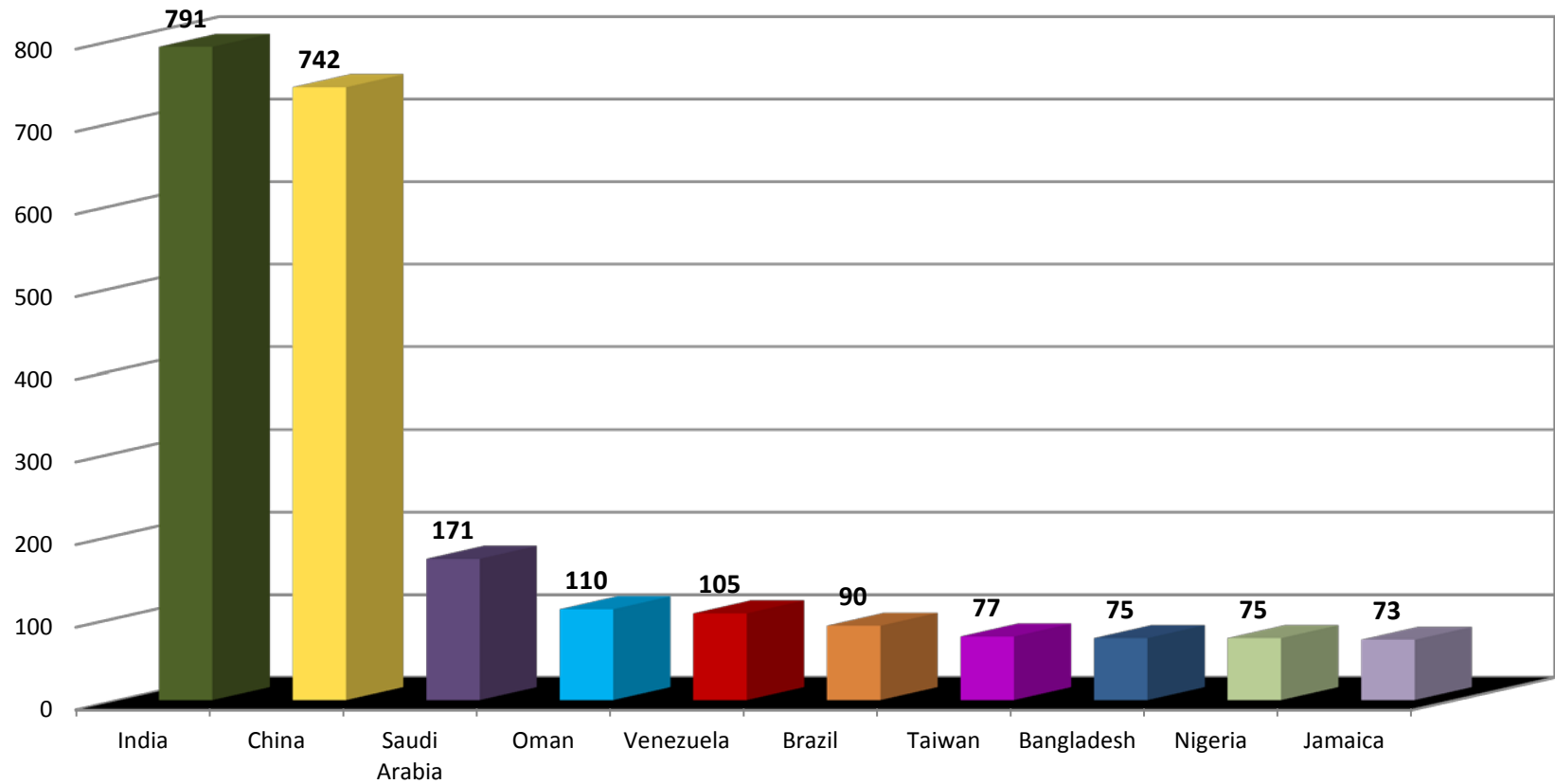
Fall 2015 Total Enrollment = 3975

Source: USF InfoCenter Add/Drop Benchmark 8/30/2015

*includes 10 Hosted Hospitality Majors

**USF World
International Services
Fall 2015**

Top 10 Countries



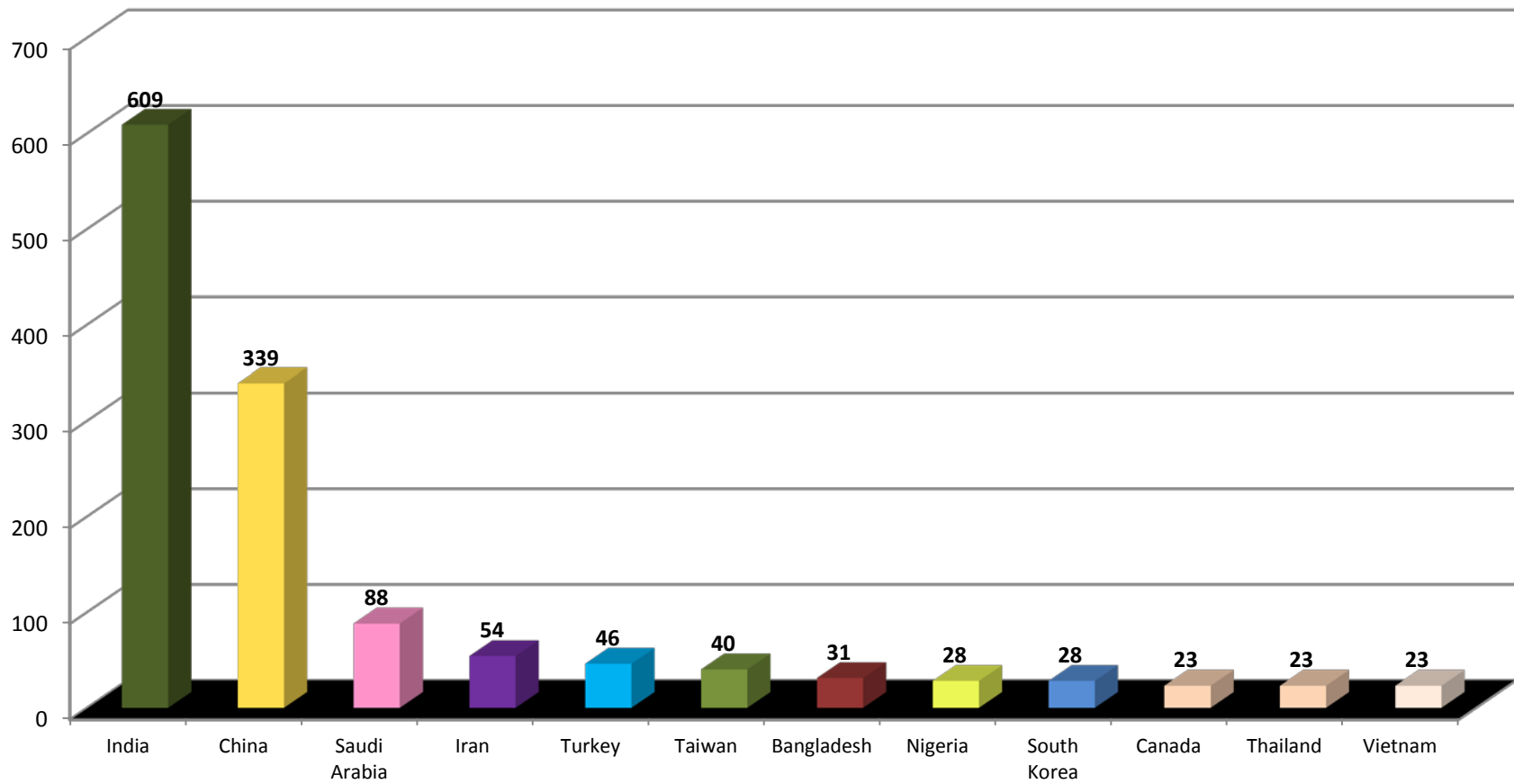
Fall 2015 Total Enrollment = 3975

Source: USF InfoCenter Add/Drop Benchmark 8/30/2015

*includes 10 Hosted Hospitality Majors

**USF World
International Services
Fall 2015**

Top Ten Countries - Graduate Students



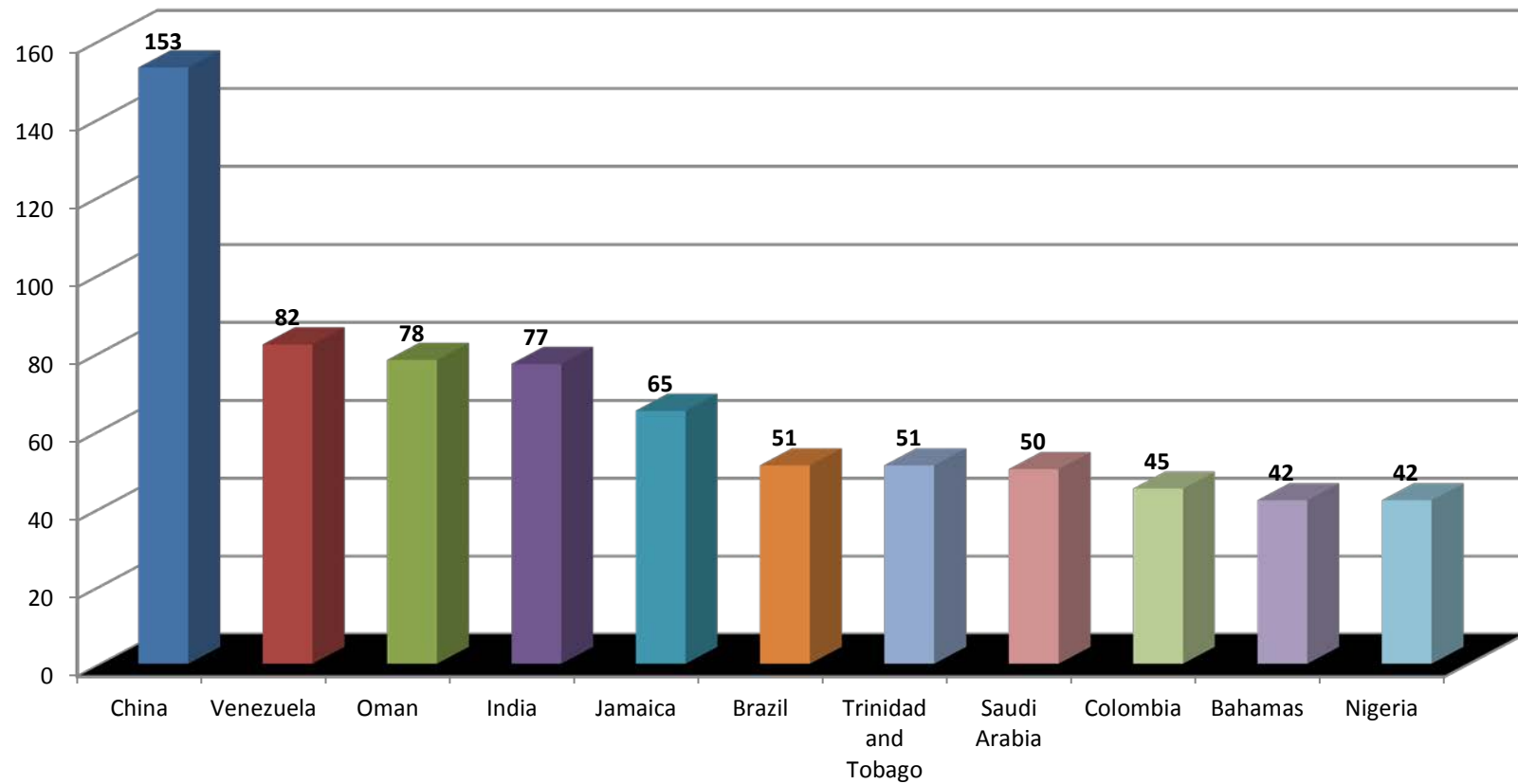
Fall 2015 Total Enrollment = 3975

Source: USF InfoCenter Add/Drop Benchmark 8/30/2015

*includes 10 Hosted Hospitality Majors

**USF World
International Services
Fall 2015**

Top 10 Countries - Undergraduate Students



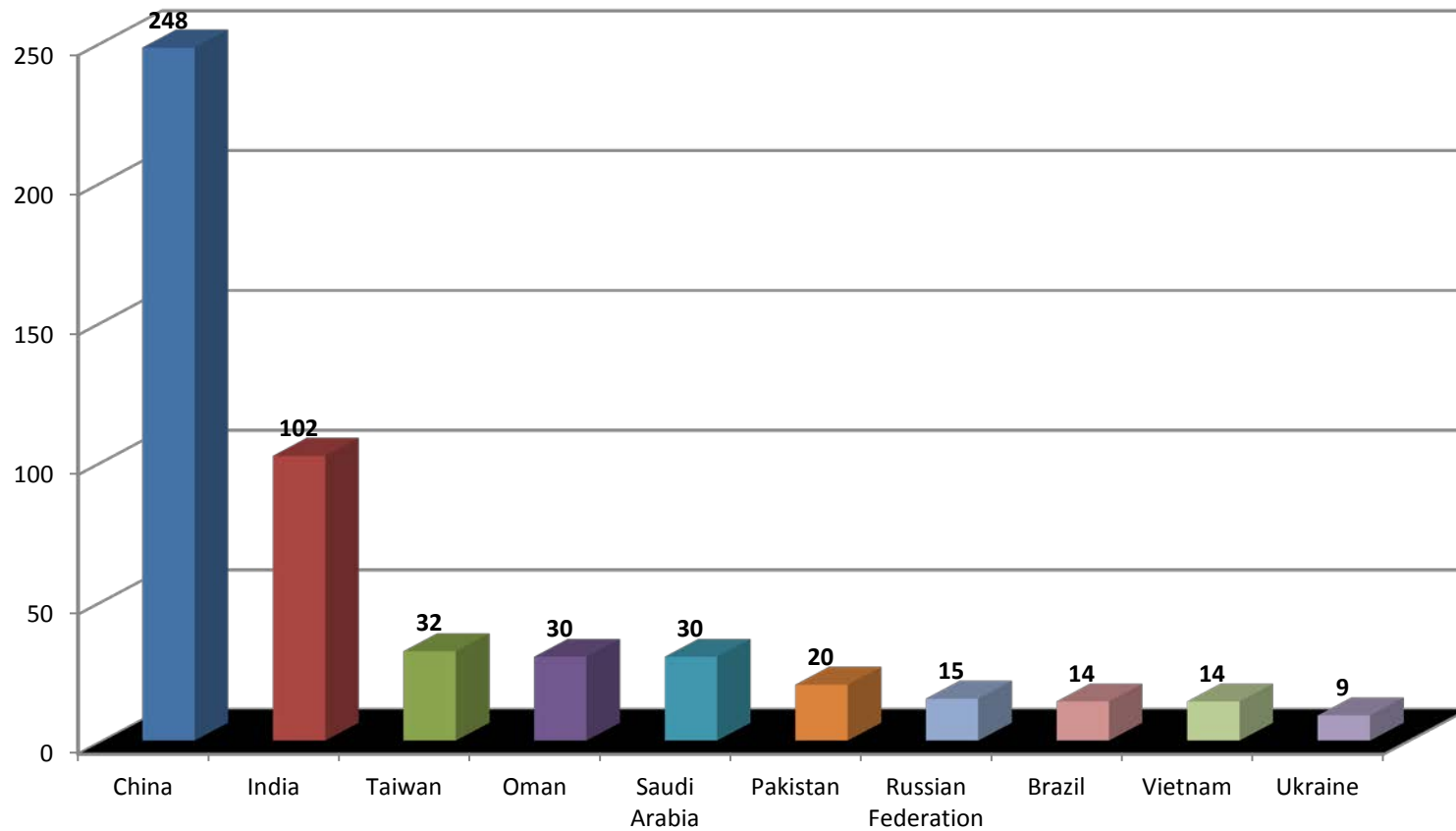
Fall 2015 Total Enrollment = 3975

Source: USF InfoCenter Add/Drop Benchmark 8/30/2015

*includes 10 Hosted Hospitality Majors

USF World
International Services
Fall 2015

Top 10 Countries - Pathways Students



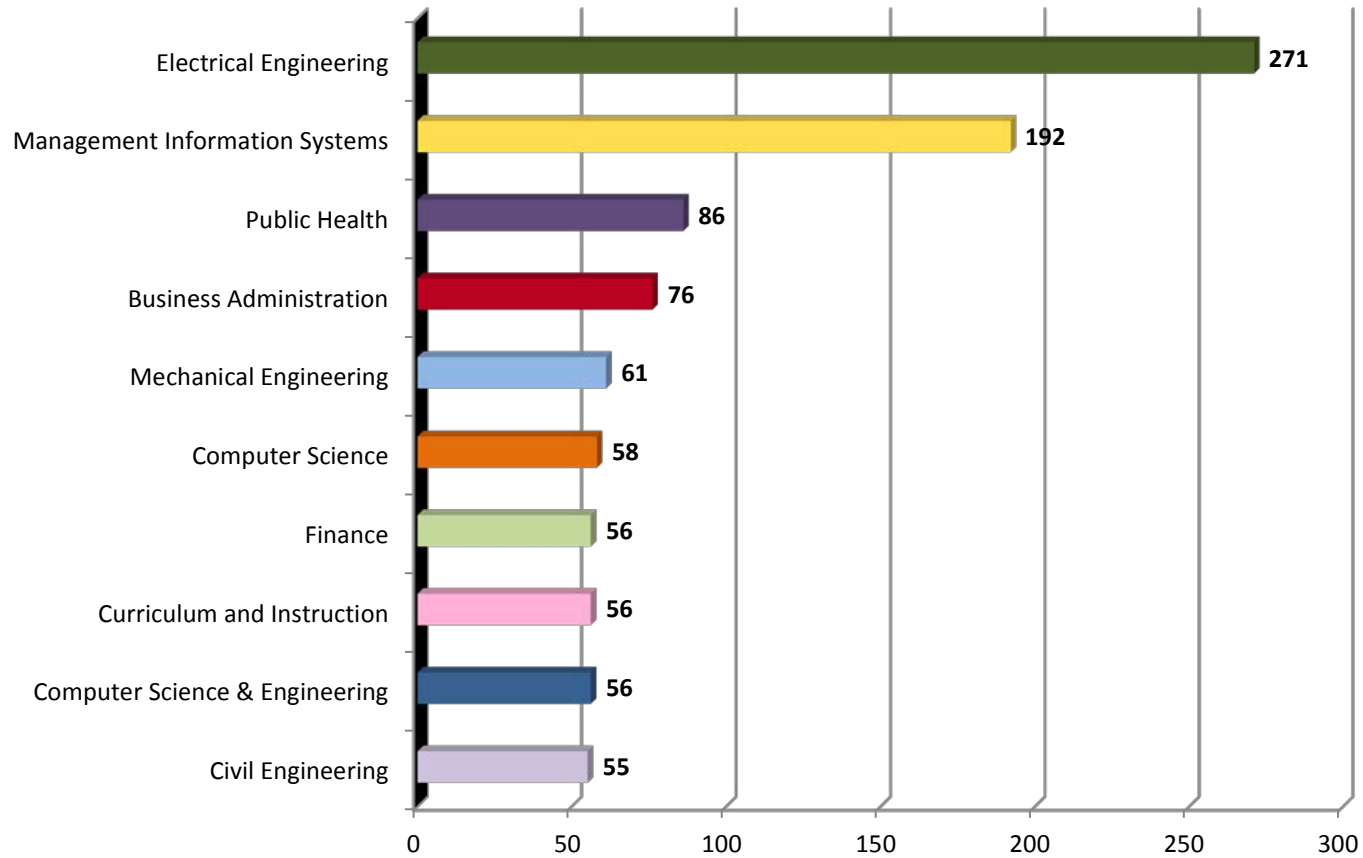
Fall 2015 Total Enrollment = 3975

Source: USF InfoCenter Add/Drop Benchmark 8/30/2015

*includes 10 Hosted Hospitality Majors

USF World
International Services
Fall 2015

Top 10 Graduate Majors



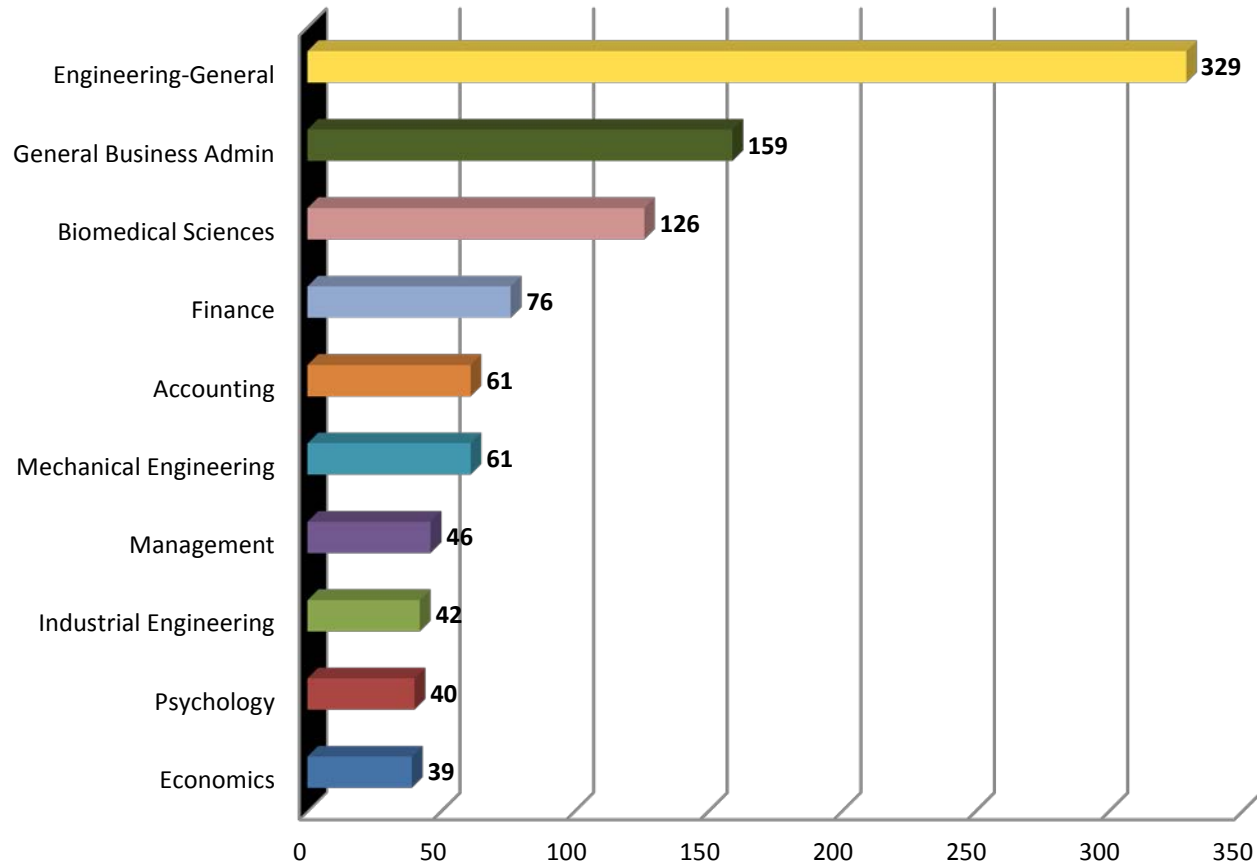
Fall 2015 Total Enrollment = 3975

Source: USF InfoCenter Add/Drop Benchmark 8/30/2015

*includes 10 Hosted Hospitality Majors

USF World
International Services
Fall 2015

Top 10 Undegraduate Majors



Fall 2015 Total Enrollment = 3975

Source: USF InfoCenter Add/Drop Benchmark 8/30/2015

*includes 10 Hosted Hospitality Majors

Number of International Students Per Country (Alphabetical Order)

Country	# Per	% of Total
Afghanistan	1	0.03%
Albania	5	0.13%
Angola	1	0.03%
Anguilla	1	0.03%
Antigua & Barbuda	4	0.10%
Argentina	9	0.23%
Armenia	1	0.03%
Australia	7	0.18%
Bahamas	54	1.36%
Bahrain	3	0.08%
Bangladesh	75	1.89%
Barbados	23	0.58%
Belarus	1	0.03%
Belize	21	0.53%
Bermuda	3	0.08%
Bolivia	6	0.15%
Brazil	90	2.26%
Bulgaria	4	0.10%
Burkina Faso	1	0.03%
Cameroon	5	0.13%
Canada	59	1.48%
Cayman Islands	5	0.13%
Chile	7	0.18%
China	742	18.67%
Colombia	69	1.74%
Costa Rica	3	0.08%
Croatia	1	0.03%
Cuba	1	0.03%
Cyprus	4	0.10%
Czech Republic	3	0.08%
Denmark	10	0.25%
Djibouti	1	0.03%
Dominica	6	0.15%
Dominican Republic	3	0.08%

Ecuador	21	0.53%
Egypt	34	0.86%
El Salvador	5	0.13%
Equatorial Guinea	1	0.03%
Eritrea	2	0.05%
Estonia	1	0.03%
Ethiopia	5	0.13%
France	14	0.35%
Gambia	4	0.10%
Gaza Strip	1	0.03%
Germany	21	0.53%
Ghana	10	0.25%
Greece	3	0.08%
Grenada	3	0.08%
Guatemala	3	0.08%
Guyana	3	0.08%
Haiti	9	0.23%
Honduras	24	0.60%
Hong Kong	7	0.18%
Hungary	2	0.05%
India	791	19.90%
Indonesia	9	0.23%
Iran	67	1.69%
Iraq	1	0.03%
Ireland	2	0.05%
Israel	4	0.10%
Italy	19	0.48%
Jamaica	73	1.84%
Japan	32	0.81%
Jordan	19	0.48%
Kazakhstan	28	0.70%
Kenya	15	0.38%
Kuwait	55	1.38%
Kyrgyzstan	5	0.13%
Laos	1	0.03%
Latvia	1	0.03%

Lebanon	8	0.20%
Lesotho	1	0.03%
Libya	14	0.35%
Lithuania	1	0.03%
Macau	1	0.03%
Macedonia	3	0.08%
Malawi	2	0.05%
Malaysia	20	0.50%
Mali	1	0.03%
Mauritius	7	0.18%
Mexico	25	0.63%
Moldova	1	0.03%
Mongolia	4	0.10%
Morocco	18	0.45%
Myanmar	17	0.43%
Nepal	12	0.30%
Netherlands	15	0.38%
New Zealand	4	0.10%
Nicaragua	2	0.05%
Niger	1	0.03%
Nigeria	75	1.89%
Norway	5	0.13%
Oman	110	2.77%
Pakistan	70	1.76%
Panama	8	0.20%
Paraguay	2	0.05%
Peru	44	1.11%
Philippines	4	0.10%
Poland	4	0.10%
Portugal	1	0.03%
Qatar	13	0.33%
Romania	4	0.10%
Russian Federation	71	1.79%
Saint Kitts & Nevis	2	0.05%
Saint Lucia	4	0.10%
Saudi Arabia	171	4.30%

Senegal	1	0.03%
Serbia	10	0.25%
Singapore	2	0.05%
South Africa	10	0.25%
South Korea	66	1.66%
Spain	15	0.38%
Sri Lanka	24	0.60%
St. Vincent & The Grenadines	2	0.05%
Suriname	2	0.05%
Swaziland	2	0.05%
Sweden	11	0.28%
Switzerland	1	0.03%
Syria	4	0.10%
Taiwan	77	1.94%
Tanzania	11	0.28%
Thailand	35	0.88%
Togo	2	0.05%
Trinidad and Tobago	59	1.48%
Tunisia	3	0.08%
Turkey	65	1.64%
Uganda	8	0.20%
Ukraine	22	0.55%
United Arab Emirates	7	0.18%
United Kingdom	67	1.69%
Uruguay	4	0.10%
Uzbekistan	6	0.15%
Venezuela	105	2.64%
Vietnam	66	1.66%
Virgin Islands (British)	4	0.10%
West Bank	2	0.05%
Yemen	1	0.03%
Zambia	2	0.05%
Zimbabwe	10	0.25%
Grand Total	3975	

Fall 2015 Total Enrollment = 3975

Source: USF InfoCenter Add/Drop Benchmark 8/30/2015

*includes 10 Hosted Hospitality Majors

Number of International Students Per Country (Numerical Order)

Country	# Per	% of Total
India	791	19.90%
China	742	18.67%
Saudi Arabia	171	4.30%
Oman	110	2.77%
Venezuela	105	2.64%
Brazil	90	2.26%
Taiwan	77	1.94%
Bangladesh	75	1.89%
Nigeria	75	1.89%
Jamaica	73	1.84%
Russian Federation	71	1.79%
Pakistan	70	1.76%
Colombia	69	1.74%
Iran	67	1.69%
United Kingdom	67	1.69%
South Korea	66	1.66%
Vietnam	66	1.66%
Turkey	65	1.64%
Canada	59	1.48%
Trinidad & Tobago	59	1.48%
Kuwait	55	1.38%
Bahamas	54	1.36%
Peru	44	1.11%
Thailand	35	0.88%
Egypt	34	0.86%
Japan	32	0.81%
Kazakhstan	28	0.70%
Mexico	25	0.63%
Honduras	24	0.60%
Sri Lanka	24	0.60%
Barbados	23	0.58%
Ukraine	22	0.55%
Belize	21	0.53%
Ecuador	21	0.53%

Germany	21	0.53%
Malaysia	20	0.50%
Italy	19	0.48%
Jordan	19	0.48%
Morocco	18	0.45%
Myanmar	17	0.43%
Kenya	15	0.38%
Netherlands	15	0.38%
Spain	15	0.38%
France	14	0.35%
Libya	14	0.35%
Qatar	13	0.33%
Nepal	12	0.30%
Sweden	11	0.28%
Tanzania	11	0.28%
Denmark	10	0.25%
Ghana	10	0.25%
Serbia	10	0.25%
South Africa	10	0.25%
Zimbabwe	10	0.25%
Argentina	9	0.23%
Haiti	9	0.23%
Indonesia	9	0.23%
Lebanon	8	0.20%
Panama	8	0.20%
Uganda	8	0.20%
Australia	7	0.18%
Chile	7	0.18%
Hong Kong	7	0.18%
Mauritius	7	0.18%
United Arab Emirates	7	0.18%
Bolivia	6	0.15%
Dominica	6	0.15%
Uzbekistan	6	0.15%
Albania	5	0.13%
Cameroon	5	0.13%

Cayman Islands	5	0.13%
El Salvador	5	0.13%
Ethiopia	5	0.13%
Kyrgyzstan	5	0.13%
Norway	5	0.13%
Antigua & Barbuda	4	0.10%
Bulgaria	4	0.10%
Cyprus	4	0.10%
Gambia	4	0.10%
Israel	4	0.10%
Mongolia	4	0.10%
New Zealand	4	0.10%
Philippines	4	0.10%
Poland	4	0.10%
Romania	4	0.10%
Saint Lucia	4	0.10%
Syria	4	0.10%
Uruguay	4	0.10%
Virgin Islands (British)	4	0.10%
Bahrain	3	0.08%
Bermuda	3	0.08%
Costa Rica	3	0.08%
Czech Republic	3	0.08%
Dominican Republic	3	0.08%
Greece	3	0.08%
Grenada	3	0.08%
Guatemala	3	0.08%
Guyana	3	0.08%
Macedonia	3	0.08%
Tunisia	3	0.08%
Eritrea	2	0.05%
Hungary	2	0.05%
Ireland	2	0.05%
Malawi	2	0.05%
Nicaragua	2	0.05%
Paraguay	2	0.05%

Saint Kitts & Nevis	2	0.05%
Singapore	2	0.05%
St. Vincent & The Grenadines	2	0.05%
Suriname	2	0.05%
Swaziland	2	0.05%
Togo	2	0.05%
West Bank	2	0.05%
Zambia	2	0.05%
Afghanistan	1	0.03%
Angola	1	0.03%
Anguilla	1	0.03%
Armenia	1	0.03%
Belarus	1	0.03%
Burkina Faso	1	0.03%
Croatia	1	0.03%
Cuba	1	0.03%
Djibouti	1	0.03%
Equatorial Guinea	1	0.03%
Estonia	1	0.03%
Gaza Strip	1	0.03%
Iraq	1	0.03%
Laos	1	0.03%
Latvia	1	0.03%
Lesotho	1	0.03%
Lithuania	1	0.03%
Macau	1	0.03%
Mali	1	0.03%
Moldova	1	0.03%
Niger	1	0.03%
Portugal	1	0.03%
Senegal	1	0.03%
Switzerland	1	0.03%
Yemen	1	0.03%
Grand Total	3975	

Fall 2015 Total Enrollment = 3975

Source: USF InfoCenter Add/Drop Benchmark 8/30/2015

*includes 10 Hosted Hospitality Majors