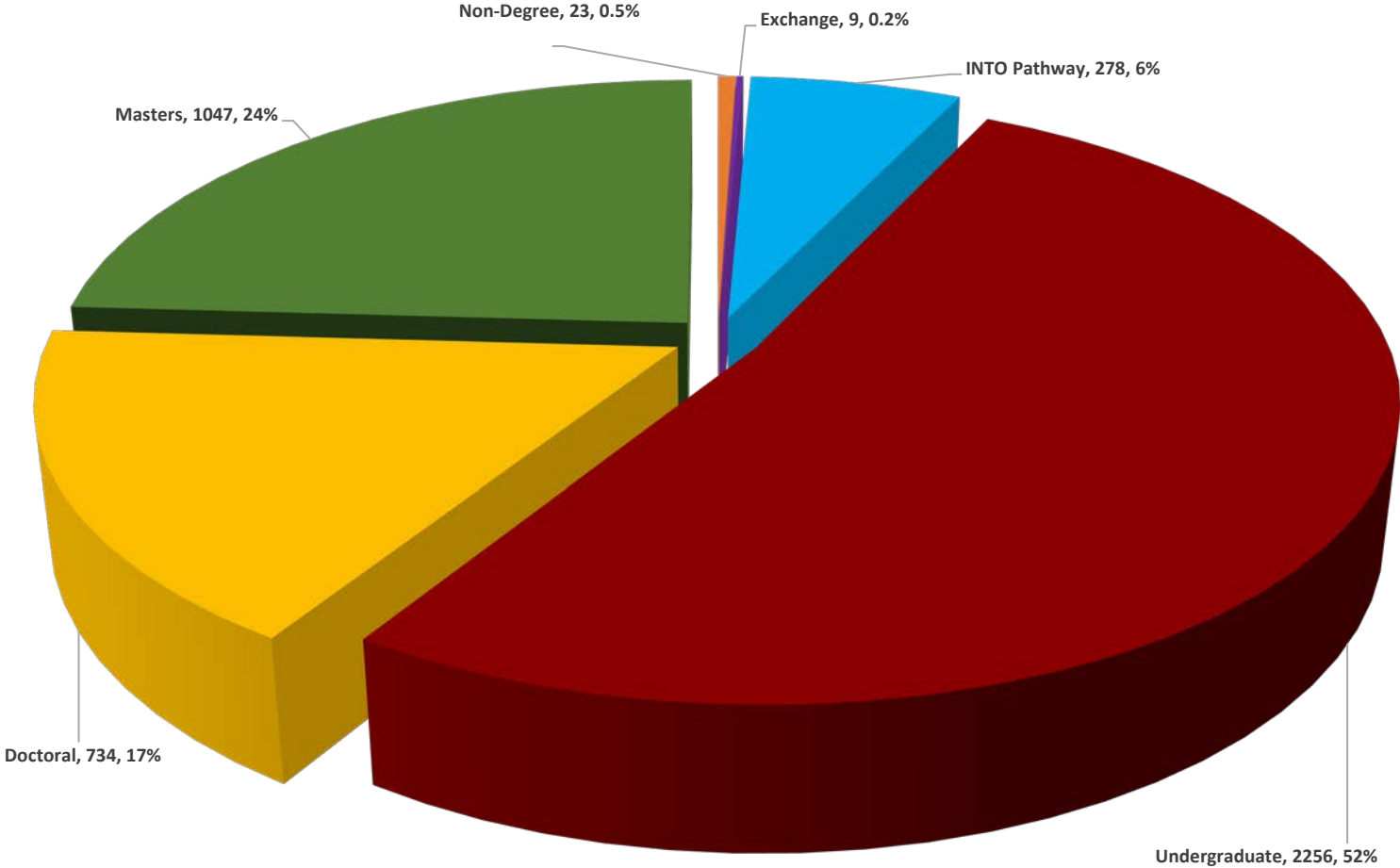


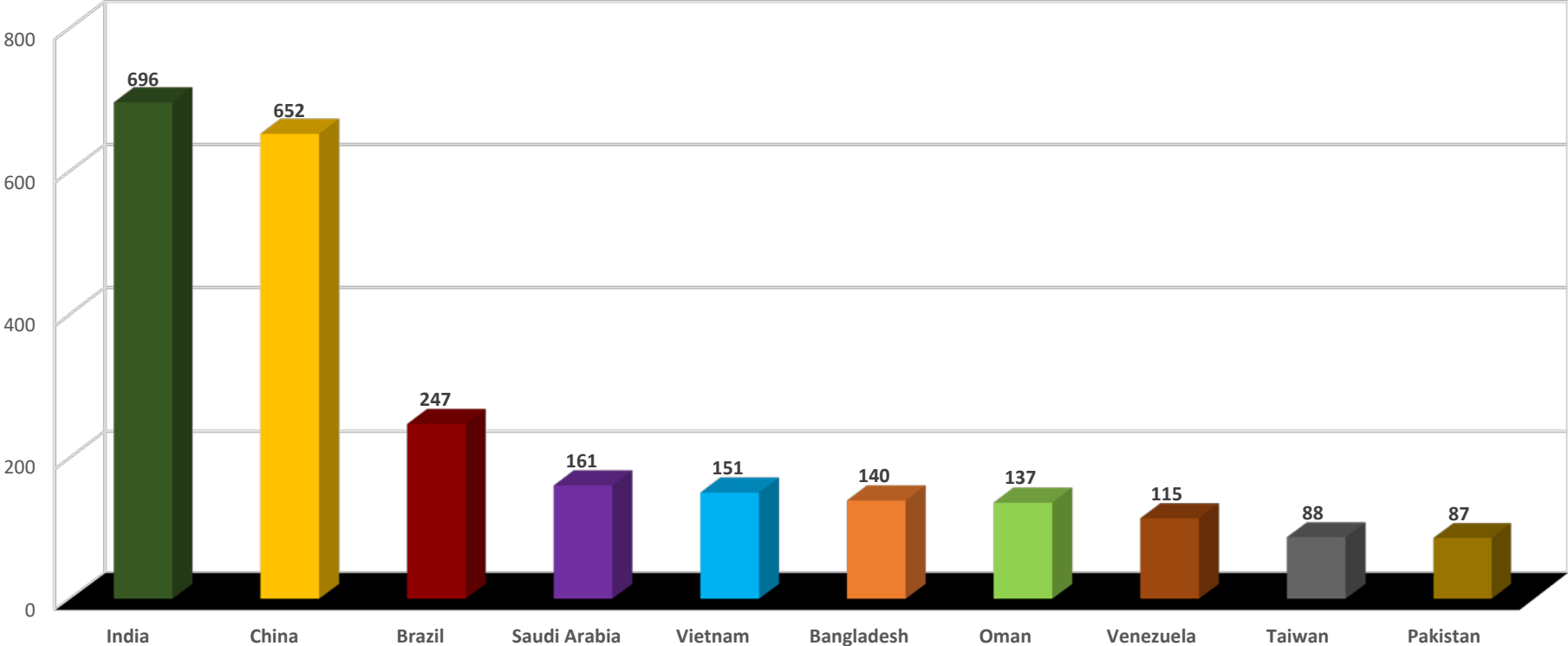
USF World
Office of International Services
Fall 2020

USF International Students Per Academic Level



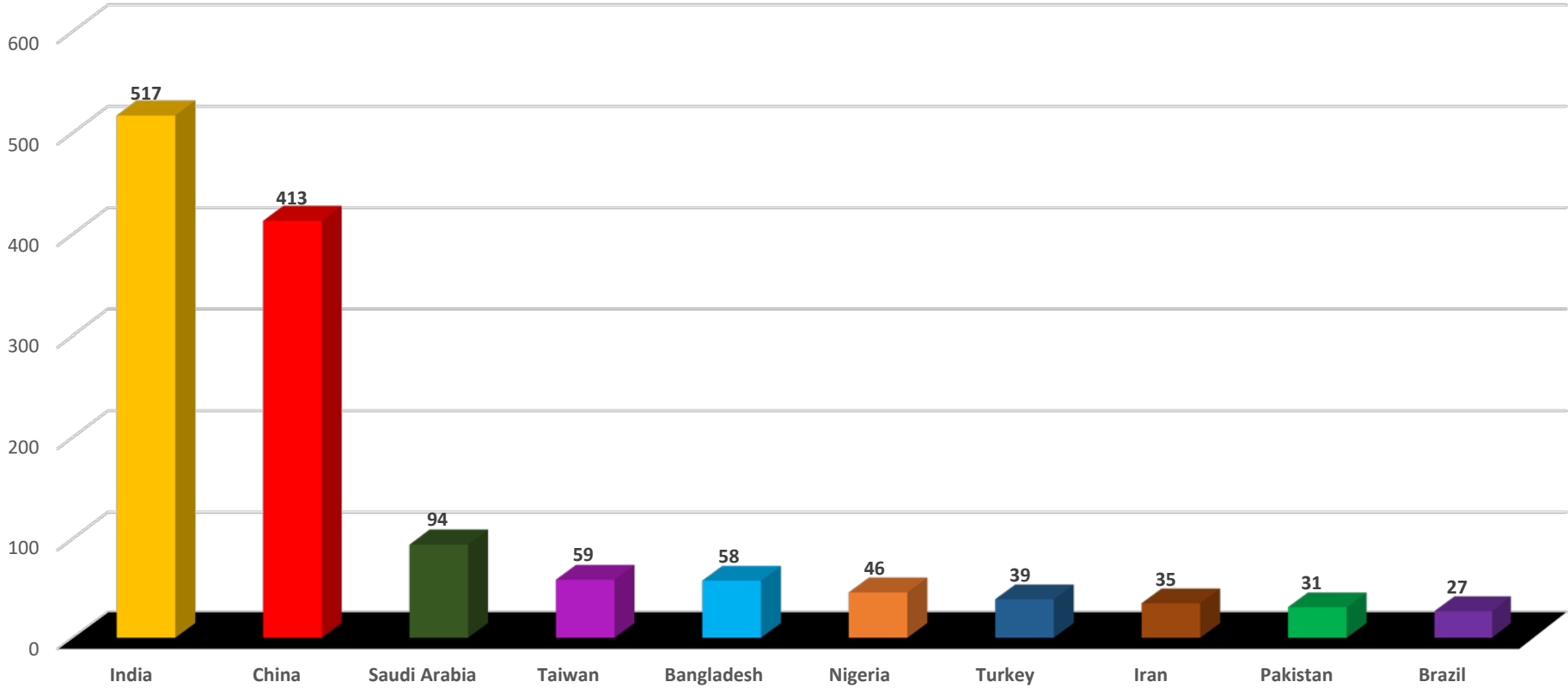
USF World
Office of International Services
Fall 2020

Top 10 Countries



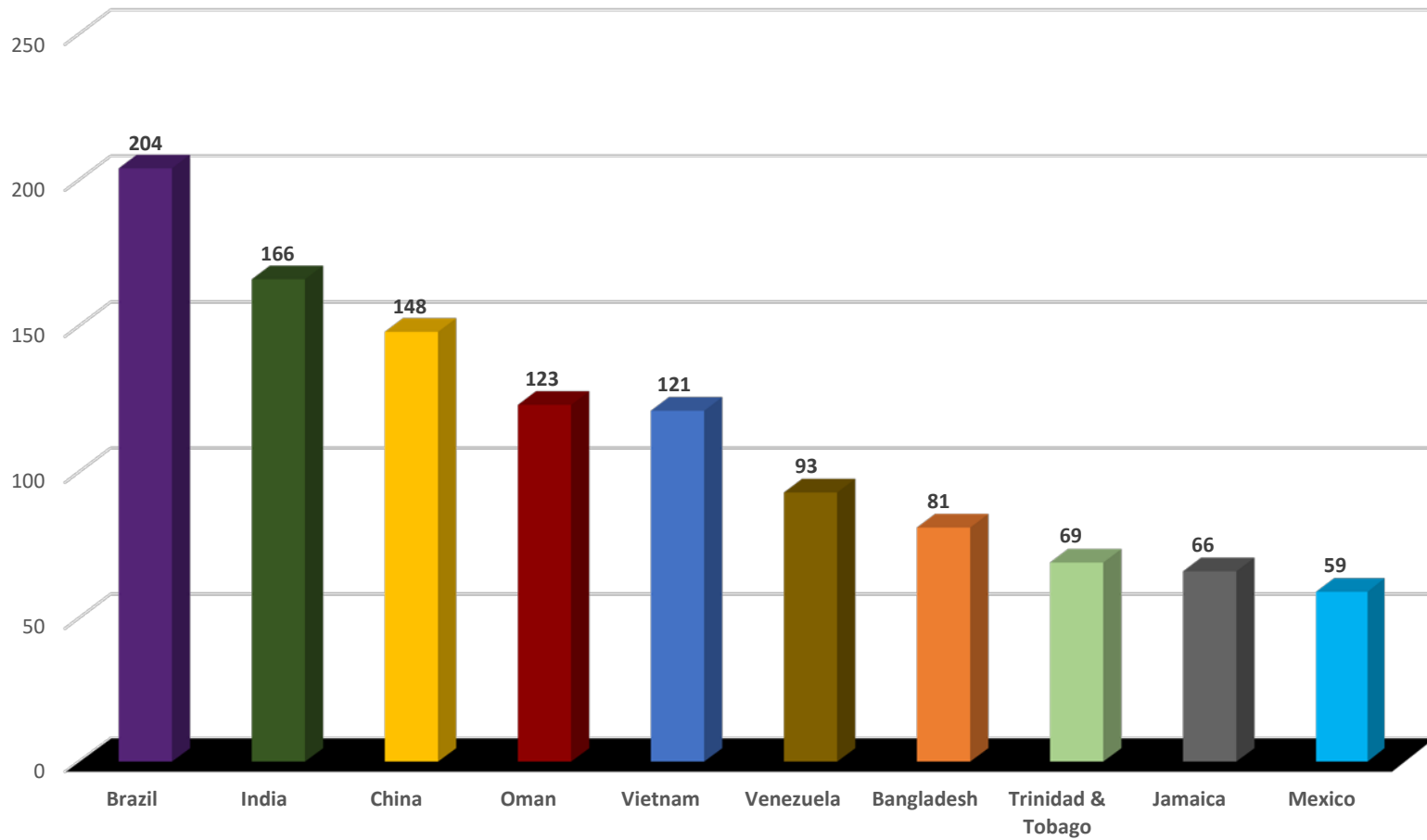
USF World
Office of International Services
Fall 2020

Top 10 Countries - Graduate Students



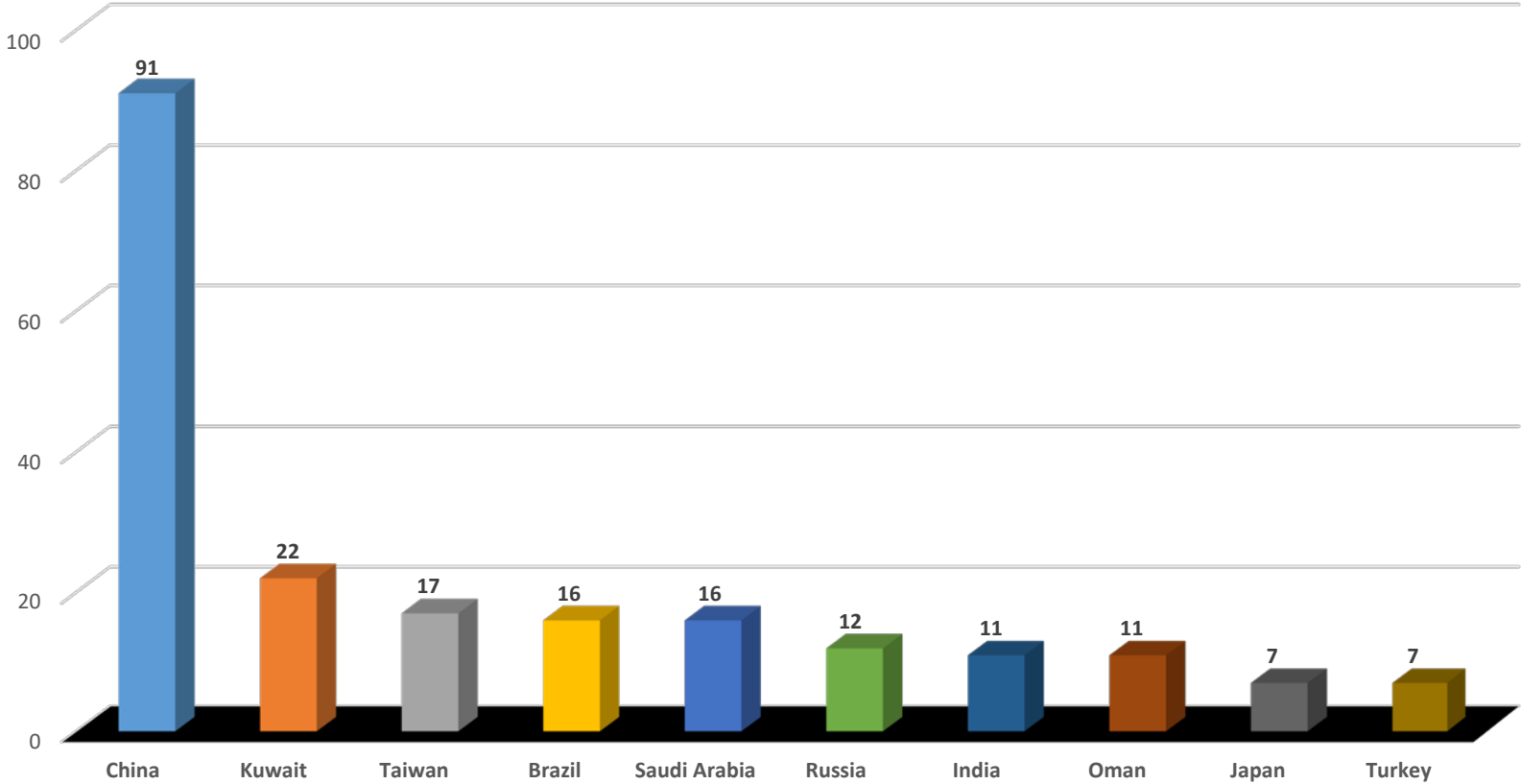
USF World
Office of International Services
Fall 2020

Top 10 Countries - Undergraduate Students



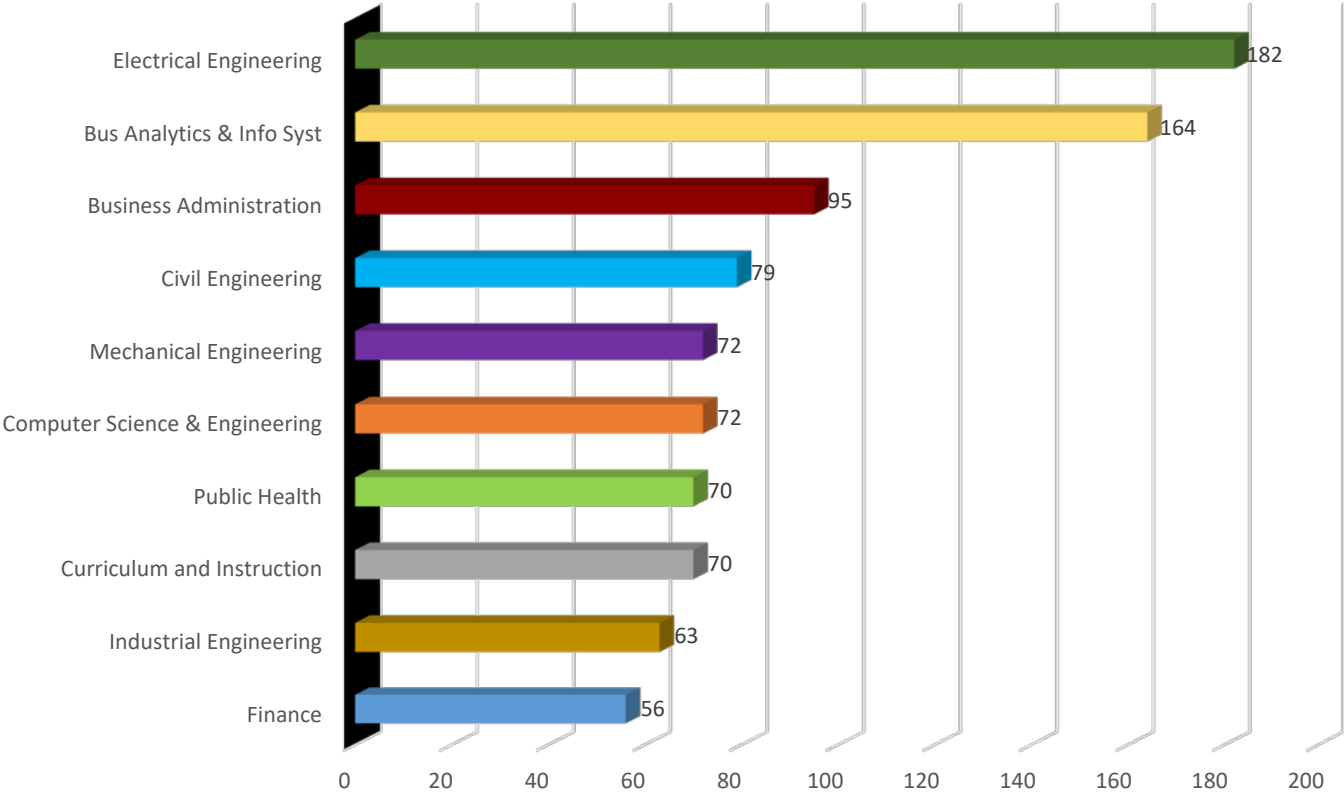
USF World
Office of International Services
Fall 2020

Top 10 Countries - Pathway Students



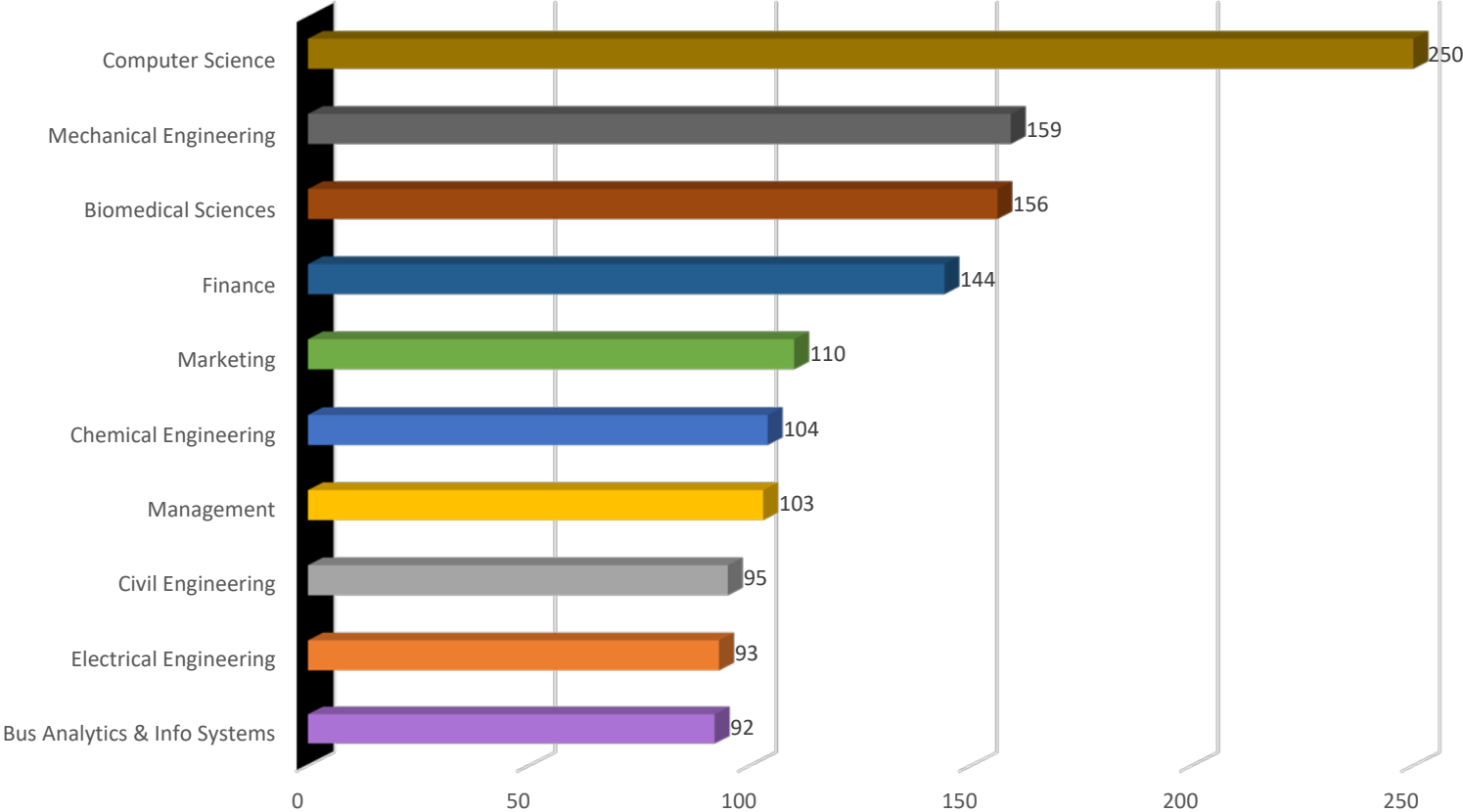
USF World
Office of International Services
Fall 2020

Top 10 Graduate Majors



USF World
Office of International Services
Fall 2020

Top 10 Majors - Undergraduate Students



Number of International Students Per Country (Alphabetical Order)

Country	# Per	% of Total
Albania	7	0.16%
Angola	4	0.09%
Antigua & Barbuda	2	0.05%
Argentina	9	0.21%
Armenia	1	0.02%
Aruba	2	0.05%
Australia	10	0.23%
Austria	1	0.02%
Azerbaijan	13	0.30%
Bahamas	51	1.17%
Bahrain	6	0.14%
Bangladesh	140	3.22%
Barbados	17	0.39%
Belarus	1	0.02%
Belgium	5	0.12%
Belize	26	0.60%
Benin	1	0.02%
Bermuda	3	0.07%
Bolivia	43	0.99%
Bosnia & Herzegovina	1	0.02%
Brazil	247	5.68%
Bulgaria	4	0.09%
Burkina Faso	2	0.05%
Cambodia	3	0.07%
Cameroon	1	0.02%
Canada	50	1.15%
Cayman Islands	14	0.32%
Chile	9	0.21%
China	652	15.00%
Colombia	80	1.84%
Congo (Kinshasa)	4	0.09%
Costa Rica	11	0.25%
Croatia	1	0.02%
Croatia	1	0.02%
Cuba	1	0.02%
Curacao	4	0.09%

Cyprus	1	0.02%
Czech Republic	5	0.12%
Dominica	7	0.16%
Dominican Republic	3	0.07%
Ecuador	24	0.55%
Egypt	72	1.66%
El Salvador	23	0.53%
Eritrea	1	0.02%
Ethiopia	4	0.09%
Finland	5	0.12%
France	28	0.64%
Gabon	2	0.05%
Georgia	3	0.07%
Germany	26	0.60%
Ghana	14	0.32%
Greece	5	0.12%
Guatemala	4	0.09%
Guyana	3	0.07%
Haiti	15	0.35%
Honduras	31	0.71%
Hong Kong	2	0.05%
Iceland	2	0.05%
India	696	16.01%
Indonesia	11	0.25%
Iran	37	0.85%
Iraq	3	0.07%
Ireland	1	0.02%
Israel	3	0.07%
Italy	21	0.48%
Jamaica	80	1.84%
Japan	32	0.74%
Jordan	19	0.44%
Kazakhstan	28	0.64%
Kenya	21	0.48%
Kosovo	1	0.02%
Kuwait	83	1.91%
Kyrgyzstan	13	0.30%

Laos	1	0.02%
Latvia	2	0.05%
Lebanon	12	0.28%
Libya	6	0.14%
Lithuania	2	0.05%
Macedonia	1	0.02%
Malaysia	18	0.41%
Mali	1	0.02%
Mauritius	2	0.05%
Mexico	65	1.50%
Moldova	3	0.07%
Mongolia	2	0.05%
Morocco	9	0.21%
Myanmar	13	0.30%
Nepal	31	0.71%
Netherlands	13	0.30%
New Zealand	4	0.09%
Nicaragua	1	0.02%
Niger	1	0.02%
Nigeria	79	1.82%
Norway	1	0.02%
Oman	137	3.15%
Pakistan	87	2.00%
Palestine	6	0.14%
Panama	8	0.18%
Paraguay	3	0.07%
Peru	50	1.15%
Philippines	3	0.07%
Poland	6	0.14%
Portugal	6	0.14%
Qatar	10	0.23%
Romania	1	0.02%
Russia	66	1.52%
Rwanda	1	0.02%
Saint Kitts & Nevis	3	0.07%
Saint Lucia	1	0.02%
Saudi Arabia	161	3.70%

Senegal	1	0.02%
Serbia	3	0.07%
Singapore	3	0.07%
Sint Maarten	1	0.02%
Slovakia	2	0.05%
South Africa	5	0.12%
South Korea	49	1.13%
Spain	26	0.60%
Sri Lanka	21	0.48%
Sudan	2	0.05%
Suriname	1	0.02%
Sweden	6	0.14%
Switzerland	1	0.02%
Syria	5	0.12%
Taiwan	88	2.02%
Tanzania	2	0.05%
Thailand	22	0.51%
Trinidad & Tobago	79	1.82%
Tunisia	3	0.07%
Turkey	59	1.36%
Turkmenistan	3	0.07%
Turks & Caicos	2	0.05%
Ukraine	25	0.58%
United Arab Emirates	12	0.28%
United Kingdom	46	1.06%
Uruguay	6	0.14%
Uzbekistan	22	0.51%
Venezuela	115	2.65%
Vietnam	151	3.47%
Virgin Islands (Br)	2	0.05%
Yemen	2	0.05%
Zambia	2	0.05%
Zimbabwe	8	0.18%
Grand Total	4347	
Total Countries	143	

Number of International Students Per Country (Numerical Order)

Country	# Per	% of Total
India	696	16.01%
China	652	15.00%
Brazil	247	5.68%
Saudi Arabia	161	3.70%
Vietnam	151	3.47%
Bangladesh	140	3.22%
Oman	137	3.15%
Venezuela	115	2.65%
Taiwan	88	2.02%
Pakistan	87	2.00%
Kuwait	83	1.91%
Colombia	80	1.84%
Jamaica	80	1.84%
Nigeria	79	1.82%
Trinidad & Tobago	79	1.82%
Egypt	72	1.66%
Russia	66	1.52%
Mexico	65	1.50%
Turkey	59	1.36%
Bahamas	51	1.17%
Canada	50	1.15%
Peru	50	1.15%
South Korea	49	1.13%
United Kingdom	46	1.06%
Bolivia	43	0.99%
Iran	37	0.85%
Japan	32	0.74%
Honduras	31	0.71%
Nepal	31	0.71%
France	28	0.64%
Kazakhstan	28	0.64%
Belize	26	0.60%
Germany	26	0.60%
Spain	26	0.60%
Ukraine	25	0.58%

Ecuador	24	0.55%
El Salvador	23	0.53%
Thailand	22	0.51%
Uzbekistan	22	0.51%
Italy	21	0.48%
Kenya	21	0.48%
Sri Lanka	21	0.48%
Jordan	19	0.44%
Malaysia	18	0.41%
Barbados	17	0.39%
Haiti	15	0.35%
Cayman Islands	14	0.32%
Ghana	14	0.32%
Azerbaijan	13	0.30%
Kyrgyzstan	13	0.30%
Myanmar	13	0.30%
Netherlands	13	0.30%
Lebanon	12	0.28%
United Arab Emirates	12	0.28%
Costa Rica	11	0.25%
Indonesia	11	0.25%
Australia	10	0.23%
Qatar	10	0.23%
Argentina	9	0.21%
Chile	9	0.21%
Morocco	9	0.21%
Panama	8	0.18%
Zimbabwe	8	0.18%
Albania	7	0.16%
Dominica	7	0.16%
Bahrain	6	0.14%
Libya	6	0.14%
Palestine	6	0.14%
Poland	6	0.14%
Portugal	6	0.14%
Sweden	6	0.14%
Uruguay	6	0.14%

Belgium	5	0.12%
Czech Republic	5	0.12%
Finland	5	0.12%
Greece	5	0.12%
South Africa	5	0.12%
Syria	5	0.12%
Angola	4	0.09%
Bulgaria	4	0.09%
Congo (Kinshasa)	4	0.09%
Curacao	4	0.09%
Ethiopia	4	0.09%
Guatemala	4	0.09%
New Zealand	4	0.09%
Bermuda	3	0.07%
Cambodia	3	0.07%
Dominican Republic	3	0.07%
Georgia	3	0.07%
Guyana	3	0.07%
Iraq	3	0.07%
Israel	3	0.07%
Moldova	3	0.07%
Paraguay	3	0.07%
Philippines	3	0.07%
Saint Kitts & Nevis	3	0.07%
Serbia	3	0.07%
Singapore	3	0.07%
Tunisia	3	0.07%
Turkmenistan	3	0.07%
Antigua & Barbuda	2	0.05%
Aruba	2	0.05%
Burkina Faso	2	0.05%
Gabon	2	0.05%
Hong Kong	2	0.05%
Iceland	2	0.05%
Latvia	2	0.05%
Lithuania	2	0.05%
Mauritius	2	0.05%

Mongolia	2	0.05%
Slovakia	2	0.05%
Sudan	2	0.05%
Tanzania	2	0.05%
Turks & Caicos	2	0.05%
Virgin Islands (Br)	2	0.05%
Yemen	2	0.05%
Zambia	2	0.05%
Armenia	1	0.02%
Austria	1	0.02%
Belarus	1	0.02%
Benin	1	0.02%
Bosnia & Herzegovina	1	0.02%
Cameroon	1	0.02%
Croatia	1	0.02%
Croatia	1	0.02%
Cuba	1	0.02%
Cyprus	1	0.02%
Eritrea	1	0.02%
Ireland	1	0.02%
Kosovo	1	0.02%
Laos	1	0.02%
Macedonia	1	0.02%
Mali	1	0.02%
Nicaragua	1	0.02%
Niger	1	0.02%
Norway	1	0.02%
Romania	1	0.02%
Rwanda	1	0.02%
Saint Lucia	1	0.02%
Senegal	1	0.02%
Sint Maarten	1	0.02%
Suriname	1	0.02%
Switzerland	1	0.02%
Grand Total	4347	
Total Countries	143	