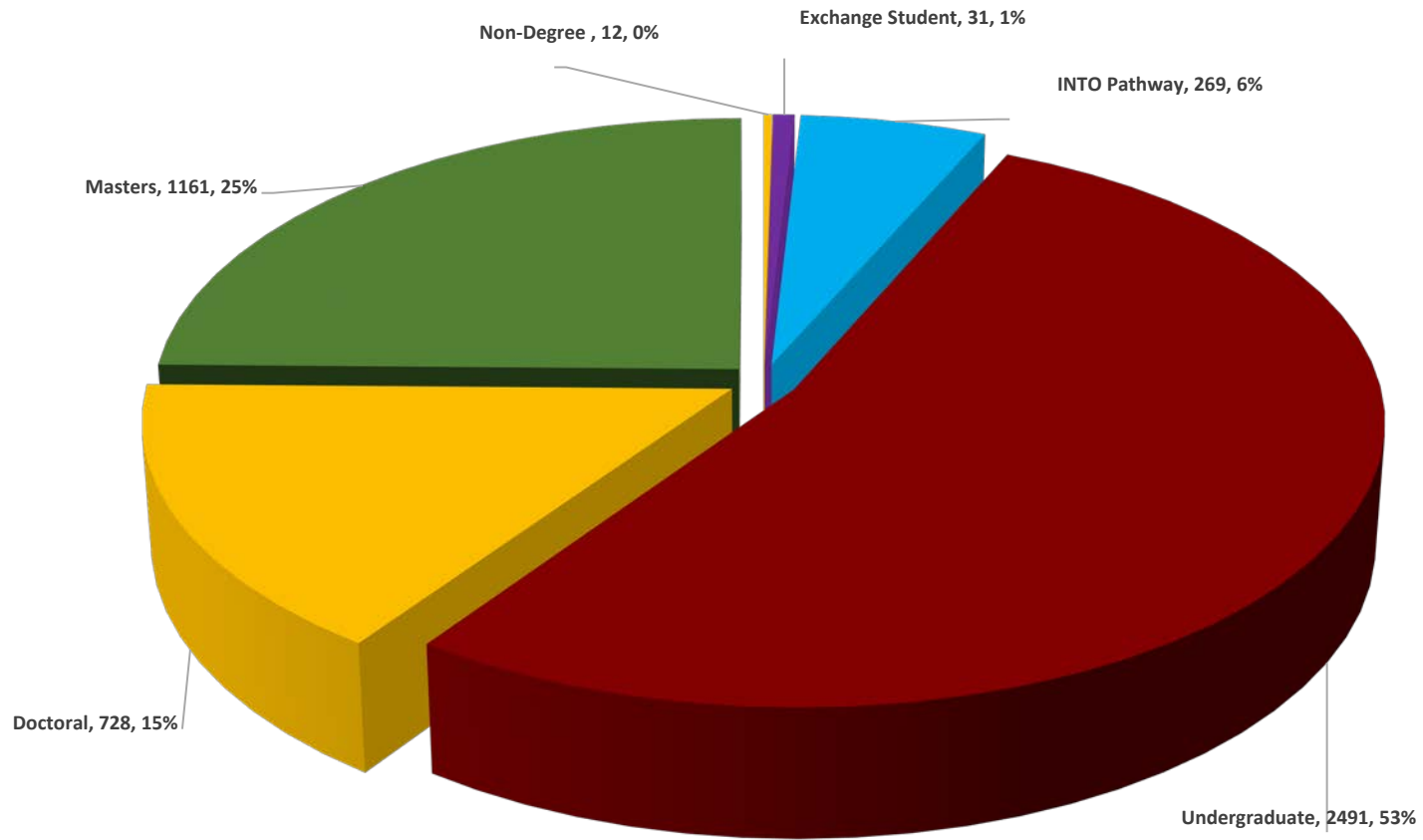


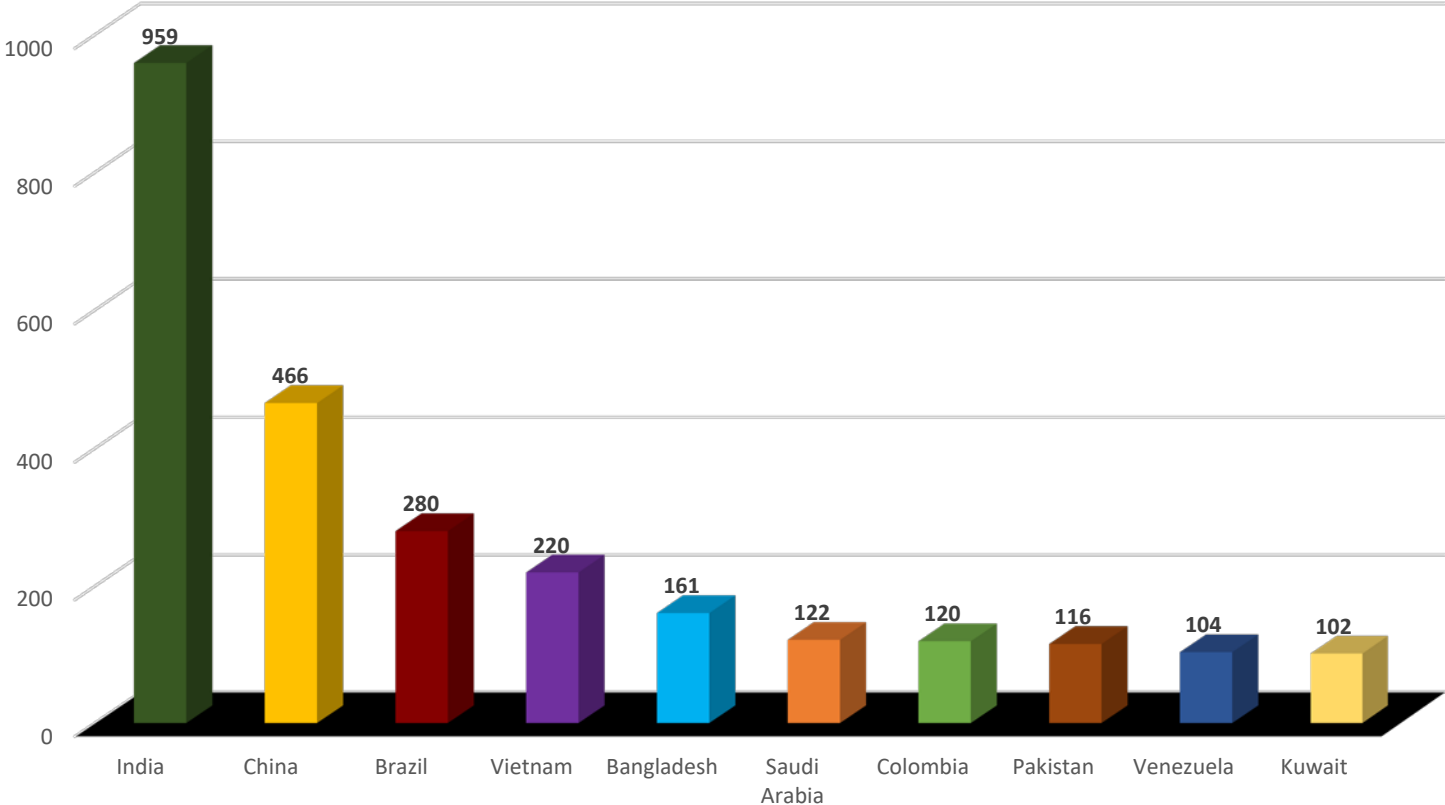
USF World
Office of International Services
Fall 2021

USF International Students Per Academic Level



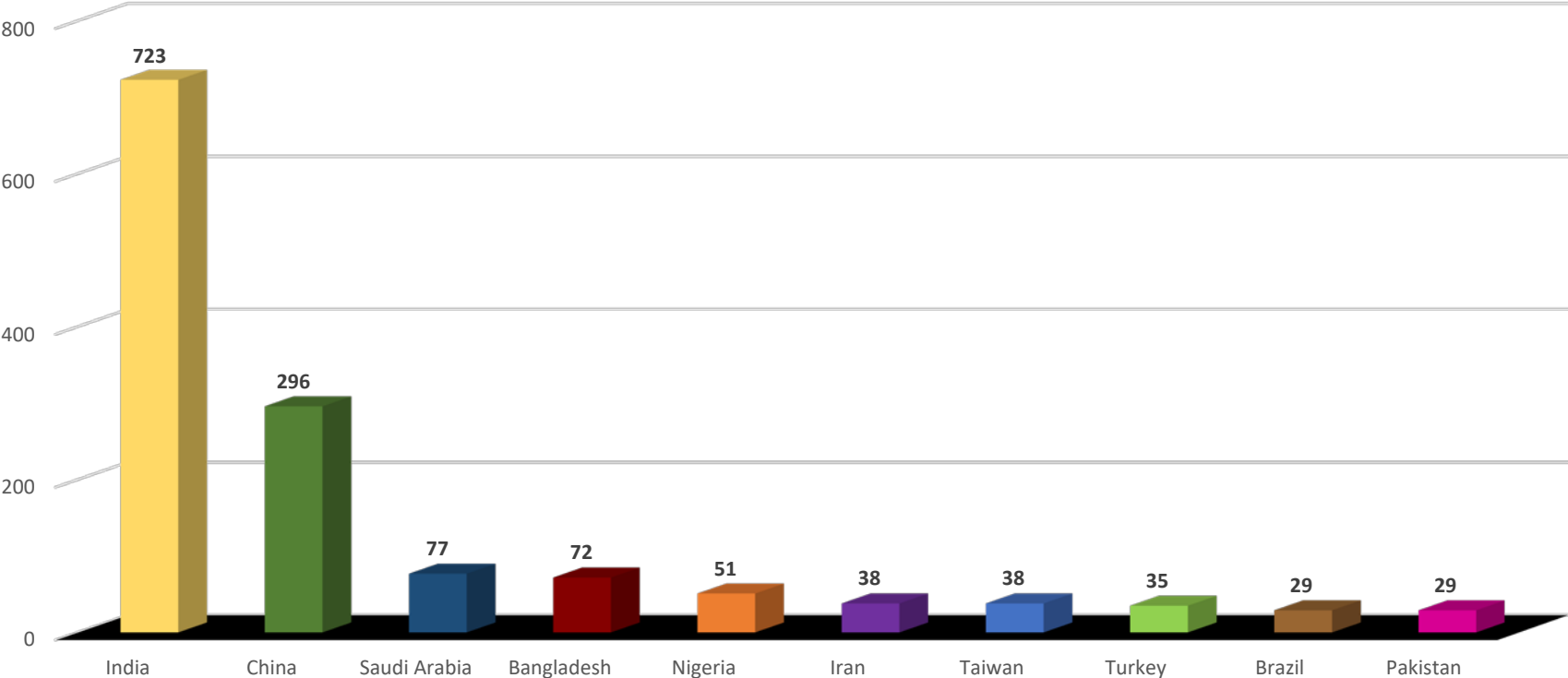
USF World
Office of International Services
Fall 2021

Top 10 Countries



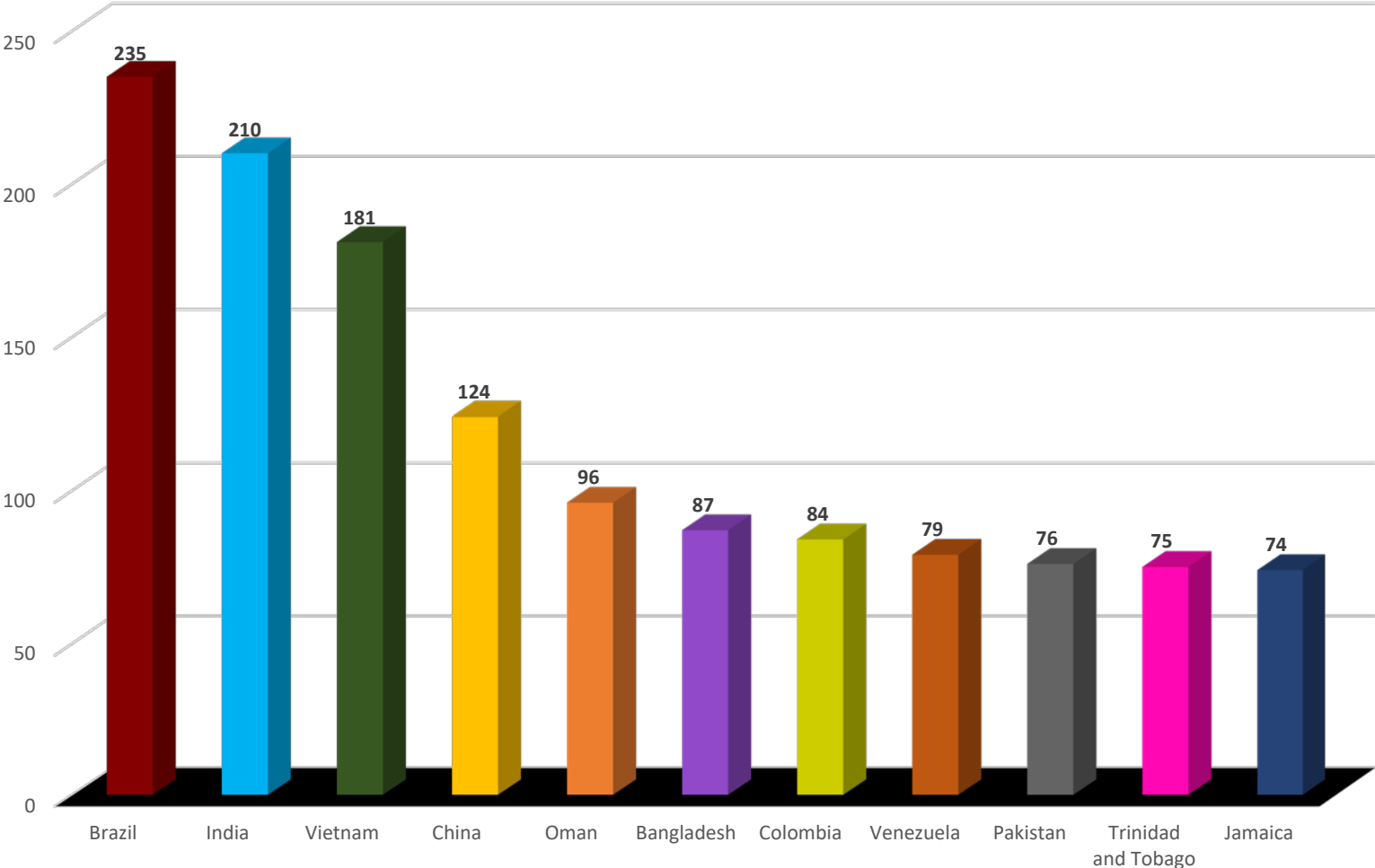
USF World
Office of International Services
Fall 2021

Top 10 Countries - Graduate Students



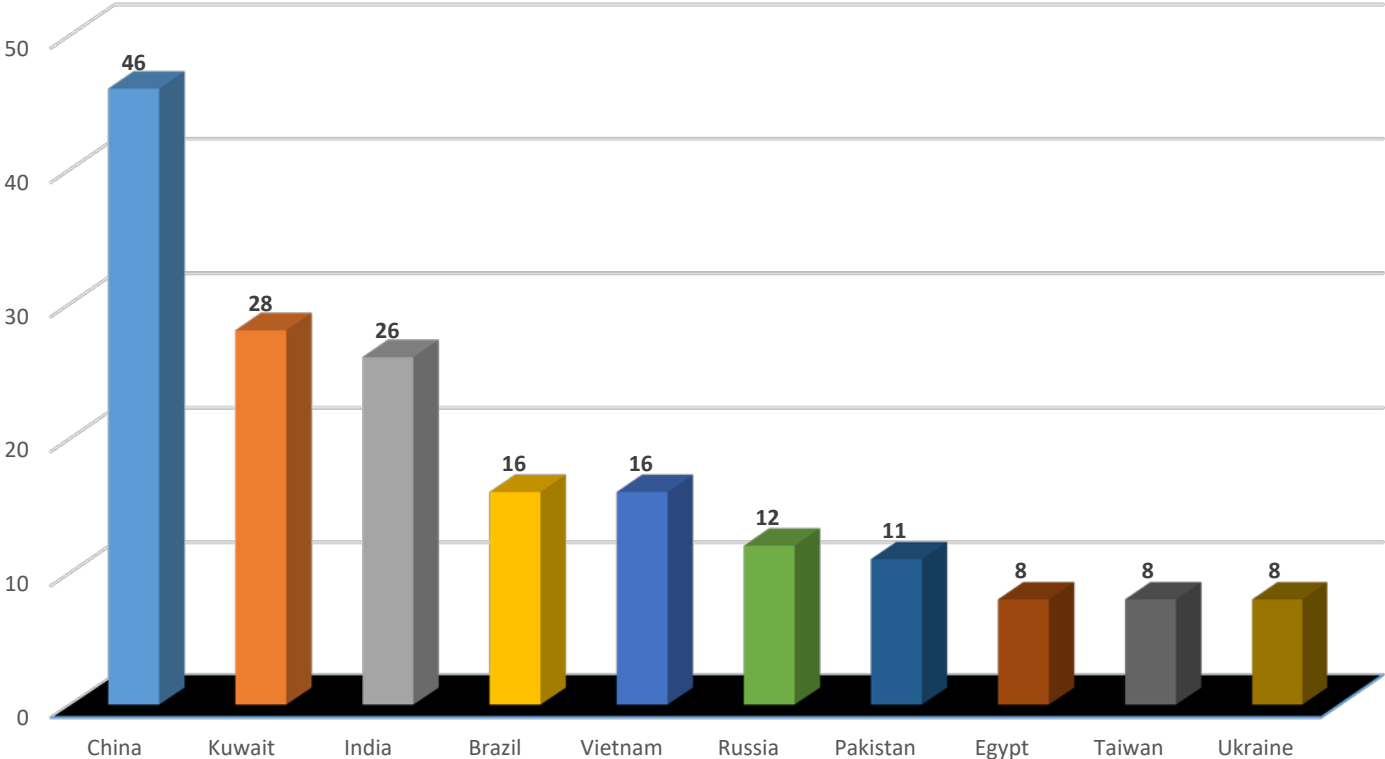
USF World
Office of International Services
Fall 2021

Top 10 Countries - Undergraduate Students



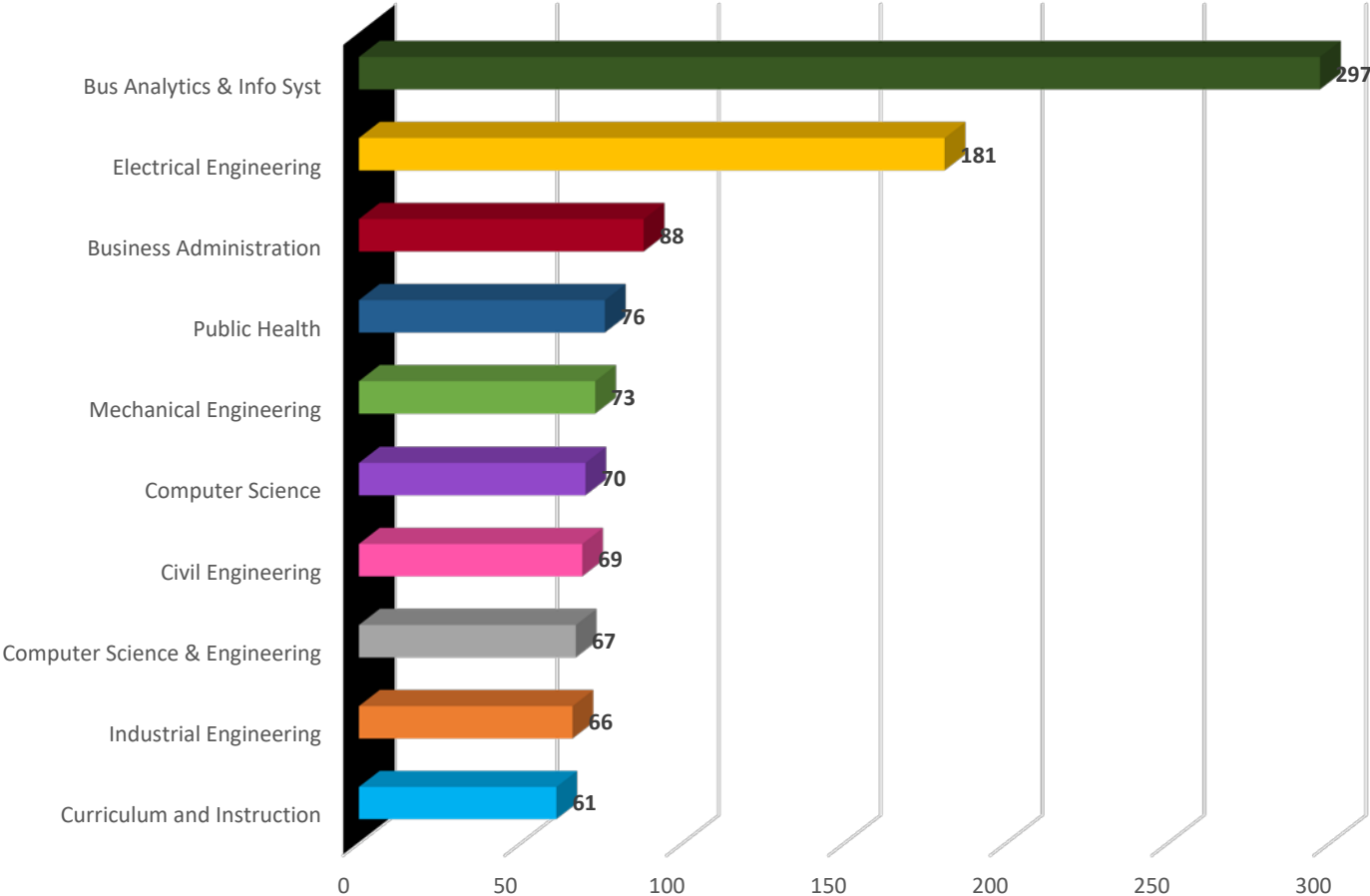
USF World
Office of International Services
Fall 2021

Top 10 Countries - Pathway Students



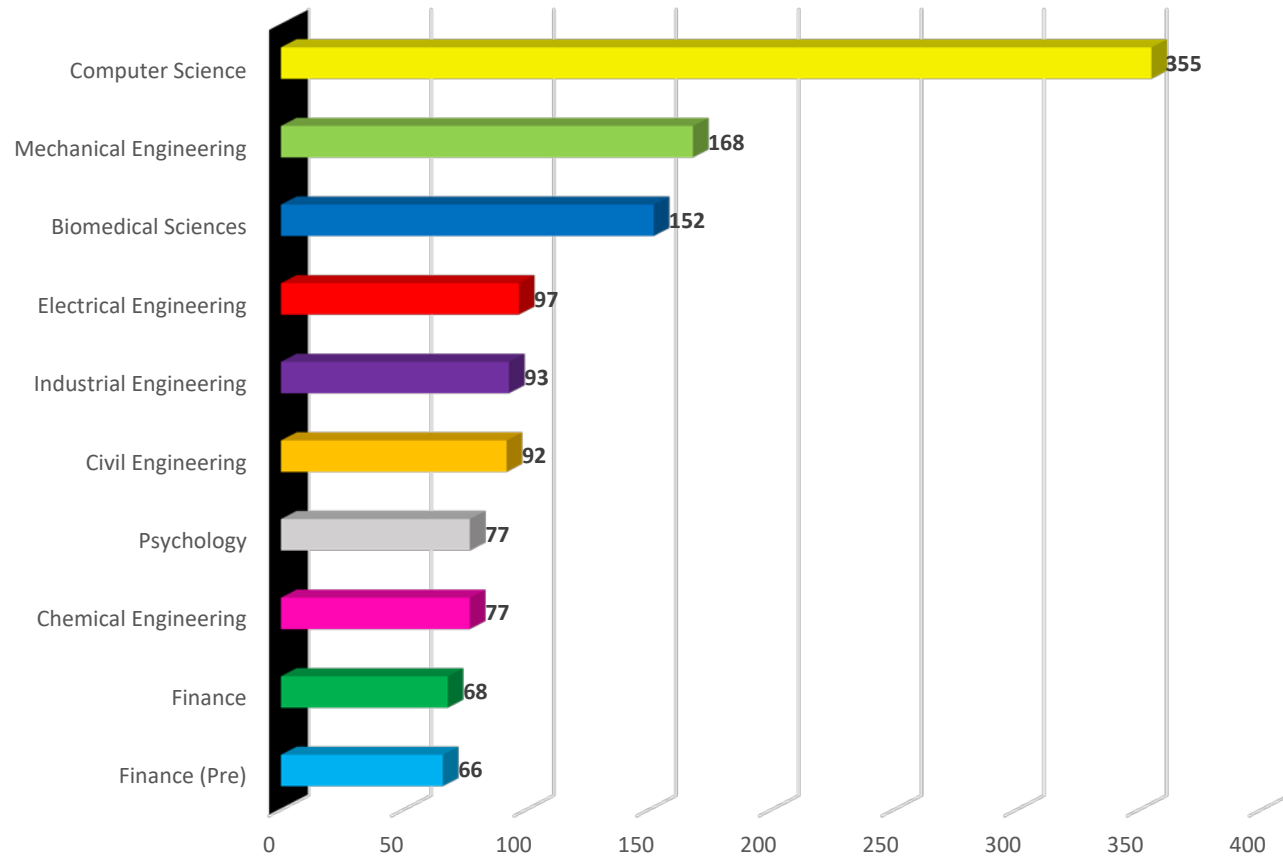
USF World
Office of International Services
Fall 2021

Top 10 Graduate Majors



USF World
Office of International Services
Fall 2021

Top 10 Majors - Undergraduate Students



Number of International Students Per Country (Alphabetical Order)

Country	# Per	% of Total
Albania	11	0.23%
Angola	4	0.09%
Antigua and Barbuda	3	0.06%
Argentina	11	0.23%
Armenia	1	0.02%
Australia	5	0.11%
Azerbaijan	27	0.58%
Bahamas	63	1.34%
Bahrain	6	0.13%
Bangladesh	161	3.43%
Barbados	18	0.38%
Belarus	2	0.04%
Belgium	5	0.11%
Belize	25	0.53%
Benin	1	0.02%
Bermuda	3	0.06%
Bolivia	54	1.15%
Bosnia and Herzegovina	1	0.02%
Brazil	280	5.97%
Bulgaria	3	0.06%
Burkina Faso	1	0.02%
Cambodia	2	0.04%
Cameroon	6	0.13%
Canada	56	1.19%
Cayman Islands	16	0.34%
Chile	12	0.26%
China	466	9.93%
Colombia	120	2.56%
Congo (Kinshasa)	5	0.11%
Costa Rica	11	0.23%
Croatia	1	0.02%
Croatia	2	0.04%
Curacao	2	0.04%
Cyprus	2	0.04%
Czech Republic	2	0.04%
Denmark	3	0.06%
Dominica	7	0.15%

Dominican Republic	6	0.13%
Ecuador	24	0.51%
Egypt	88	1.88%
El Salvador	16	0.34%
Eritrea	1	0.02%
Ethiopia	8	0.17%
Finland	3	0.06%
France	29	0.62%
Gabon	2	0.04%
Georgia	6	0.13%
Germany	28	0.60%
Ghana	20	0.43%
Greece	5	0.11%
Grenada	1	0.02%
Guatemala	9	0.19%
Guyana	3	0.06%
Haiti	18	0.38%
Honduras	28	0.60%
Hong Kong	2	0.04%
Iceland	1	0.02%
India	959	20.44%
Indonesia	13	0.28%
Iran	39	0.83%
Iraq	3	0.06%
Ireland	1	0.02%
Israel	1	0.02%
Italy	28	0.60%
Jamaica	87	1.85%
Japan	41	0.87%
Jordan	15	0.32%
Kazakhstan	32	0.68%
Kenya	19	0.40%
Kosovo	1	0.02%
Kuwait	102	2.17%
Kyrgyzstan	13	0.28%
Latvia	2	0.04%
Lebanon	8	0.17%
Liberia	1	0.02%
Libya	8	0.17%

Lithuania	2	0.04%
Malawi	2	0.04%
Malaysia	16	0.34%
Mali	1	0.02%
Mauritius	1	0.02%
Mexico	59	1.26%
Moldova	4	0.09%
Mongolia	2	0.04%
Morocco	12	0.26%
Myanmar	13	0.28%
Nepal	32	0.68%
Netherlands	6	0.13%
New Zealand	1	0.02%
Nicaragua	2	0.04%
Nigeria	87	1.85%
Norway	4	0.09%
Oman	101	2.15%
Pakistan	116	2.47%
Palestine	5	0.11%
Panama	16	0.34%
Paraguay	2	0.04%
Peru	59	1.26%
Philippines	6	0.13%
Poland	3	0.06%
Portugal	9	0.19%
Qatar	9	0.19%
Romania	1	0.02%
Russia	76	1.62%
Saint Kitts and Nevis	3	0.06%
Saint Lucia	2	0.04%
Saudi Arabia	122	2.60%
Senegal	1	0.02%
Serbia	4	0.09%
Singapore	1	0.02%
Slovakia	2	0.04%
South Africa	6	0.13%
South Korea	48	1.02%
Spain	41	0.87%
Sri Lanka	22	0.47%

Sudan	4	0.09%
Sweden	6	0.13%
Switzerland	4	0.09%
Syria	4	0.09%
Taiwan	61	1.30%
Tajikistan	1	0.02%
Tanzania	2	0.04%
Thailand	22	0.47%
Trinidad and Tobago	83	1.77%
Tunisia	4	0.09%
Turkey	52	1.11%
Turkmenistan	3	0.06%
Turks & Caicos Islands	1	0.02%
Uganda	1	0.02%
Ukraine	35	0.75%
United Arab Emirates	4	0.09%
United Kingdom	48	1.02%
Uruguay	7	0.15%
Uzbekistan	40	0.85%
Venezuela	104	2.22%
Vietnam	220	4.69%
Virgin Islands (Br)	4	0.09%
Yemen	2	0.04%
Zambia	2	0.04%
Zimbabwe	10	0.21%
Grand Total	4692	
Total Countries	140	

Number of International Students Per Country (Numerical Order)

Country	# Per	% of Total
India	959	20.44%
China	466	9.93%
Brazil	280	5.97%
Vietnam	220	4.69%
Bangladesh	161	3.43%
Saudi Arabia	122	2.60%
Colombia	120	2.56%
Pakistan	116	2.47%
Venezuela	104	2.22%
Kuwait	102	2.17%
Oman	101	2.15%
Egypt	88	1.88%
Jamaica	87	1.85%
Nigeria	87	1.85%
Trinidad and Tobago	83	1.77%
Russia	76	1.62%
Bahamas	63	1.34%
Taiwan	61	1.30%
Mexico	59	1.26%
Peru	59	1.26%
Canada	56	1.19%
Bolivia	54	1.15%
Turkey	52	1.11%
South Korea	48	1.02%
United Kingdom	48	1.02%
Japan	41	0.87%
Spain	41	0.87%
Uzbekistan	40	0.85%
Iran	39	0.83%
Ukraine	35	0.75%
Kazakhstan	32	0.68%
Nepal	32	0.68%
France	29	0.62%
Germany	28	0.60%
Honduras	28	0.60%
Italy	28	0.60%

Azerbaijan	27	0.58%
Belize	25	0.53%
Ecuador	24	0.51%
Sri Lanka	22	0.47%
Thailand	22	0.47%
Ghana	20	0.43%
Kenya	19	0.40%
Barbados	18	0.38%
Haiti	18	0.38%
Cayman Islands	16	0.34%
El Salvador	16	0.34%
Malaysia	16	0.34%
Panama	16	0.34%
Jordan	15	0.32%
Indonesia	13	0.28%
Kyrgyzstan	13	0.28%
Myanmar	13	0.28%
Chile	12	0.26%
Morocco	12	0.26%
Albania	11	0.23%
Argentina	11	0.23%
Costa Rica	11	0.23%
Zimbabwe	10	0.21%
Guatemala	9	0.19%
Portugal	9	0.19%
Qatar	9	0.19%
Ethiopia	8	0.17%
Lebanon	8	0.17%
Libya	8	0.17%
Dominica	7	0.15%
Uruguay	7	0.15%
Bahrain	6	0.13%
Cameroon	6	0.13%
Dominican Republic	6	0.13%
Georgia	6	0.13%
Netherlands	6	0.13%
Philippines	6	0.13%
South Africa	6	0.13%

Sweden	6	0.13%
Australia	5	0.11%
Belgium	5	0.11%
Congo (Kinshasa)	5	0.11%
Greece	5	0.11%
Palestine	5	0.11%
Angola	4	0.09%
Moldova	4	0.09%
Norway	4	0.09%
Serbia	4	0.09%
Sudan	4	0.09%
Switzerland	4	0.09%
Syria	4	0.09%
Tunisia	4	0.09%
United Arab Emirates	4	0.09%
Virgin Islands (Br)	4	0.09%
Antigua and Barbuda	3	0.06%
Bermuda	3	0.06%
Bulgaria	3	0.06%
Denmark	3	0.06%
Finland	3	0.06%
Guyana	3	0.06%
Iraq	3	0.06%
Poland	3	0.06%
Saint Kitts and Nevis	3	0.06%
Turkmenistan	3	0.06%
Belarus	2	0.04%
Cambodia	2	0.04%
Croatia	2	0.04%
Curacao	2	0.04%
Cyprus	2	0.04%
Czech Republic	2	0.04%
Gabon	2	0.04%
Hong Kong	2	0.04%
Latvia	2	0.04%
Lithuania	2	0.04%
Malawi	2	0.04%
Mongolia	2	0.04%

Nicaragua	2	0.04%
Paraguay	2	0.04%
Saint Lucia	2	0.04%
Slovakia	2	0.04%
Tanzania	2	0.04%
Yemen	2	0.04%
Zambia	2	0.04%
Armenia	1	0.02%
Benin	1	0.02%
Bosnia and Herzegovina	1	0.02%
Burkina Faso	1	0.02%
Croatia	1	0.02%
Eritrea	1	0.02%
Grenada	1	0.02%
Iceland	1	0.02%
Ireland	1	0.02%
Israel	1	0.02%
Kosovo	1	0.02%
Liberia	1	0.02%
Mali	1	0.02%
Mauritius	1	0.02%
New Zealand	1	0.02%
Romania	1	0.02%
Senegal	1	0.02%
Singapore	1	0.02%
Tajikistan	1	0.02%
Turks and Caicos Islands	1	0.02%
Uganda	1	0.02%
Grand Total	4692	
Total Countries	140	