



UNIVERSITY of
SOUTH FLORIDA

College of Behavioral & Community Sciences

**POLICE MENTAL HEALTH CO-RESPONDER
PROGRAMS IN FLORIDA: CONSIDERATIONS FOR
DIFFERENT MODELS**

Anna Abella, PhD & Monica Landers, MA, MSW

Criminal Justice, Mental Health, & Substance Abuse Technical Assistance Center
Quarterly Webinar, June 2021

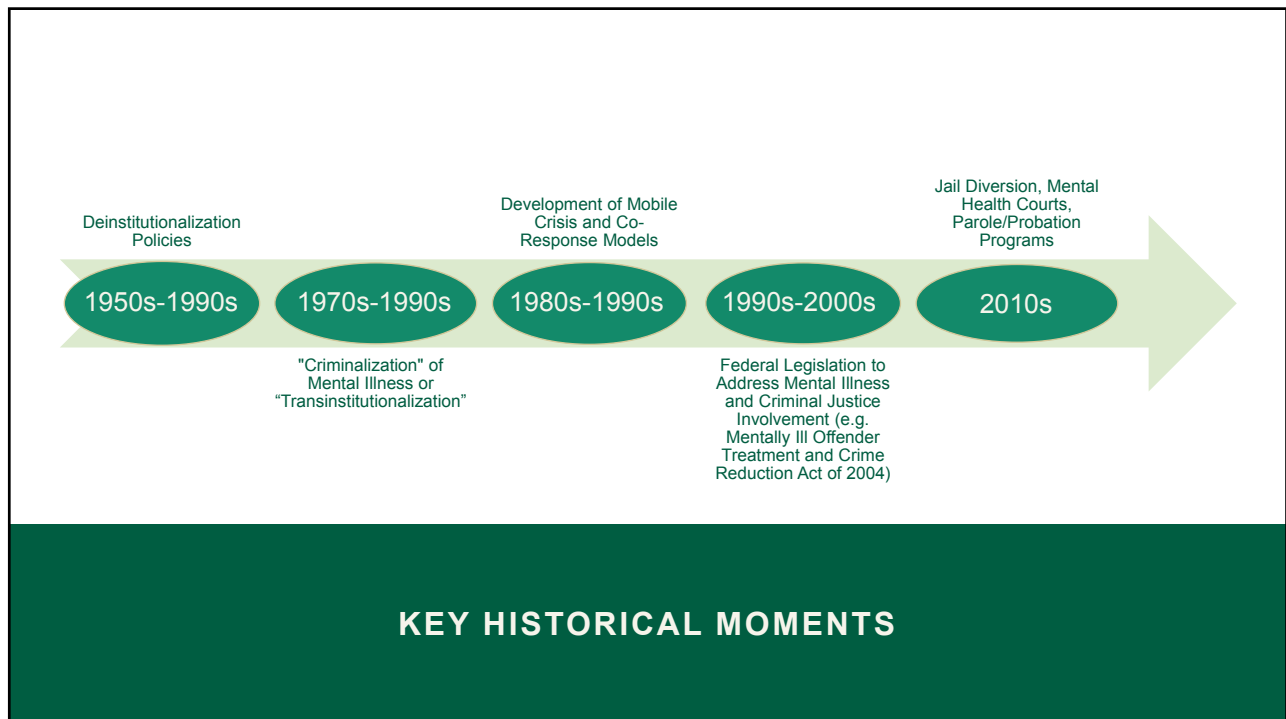
1



2

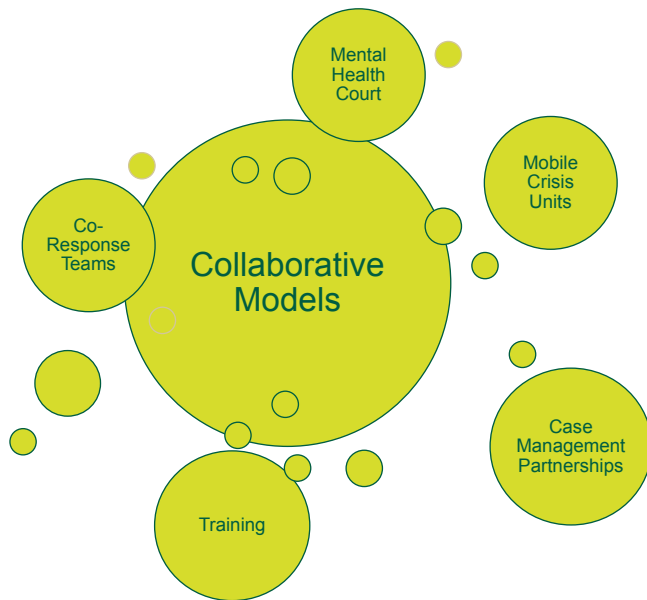


3



4

EFFORTS TO PREVENT CRIMINAL JUSTICE INVOLVEMENT



5

CO-RESPONSE TEAMS

Consist of an officer and a mental health professional

Provide crisis or post-crisis intervention and resources

Divert from criminal justice and connect with behavioral health agencies

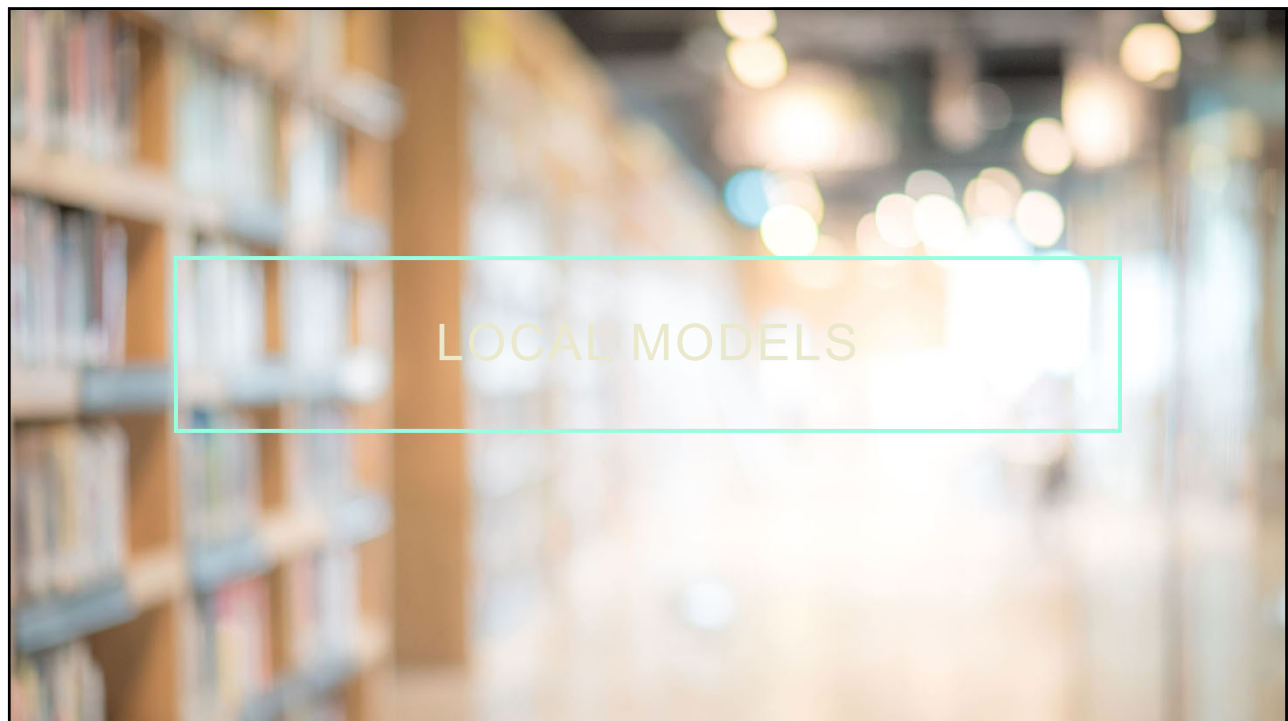
May be implemented internally or collaboratively

6

Outcome	Evidence for Effectiveness
Connection to Services	Mixed
Reducing Criminal Justice Outcomes	Somewhat Strong
Improving Officer Perception of Mental Illness	Somewhat Strong
Reducing Hospitalizations	Mixed
Cost Effectiveness	Somewhat Strong
Mental Health Improvement	Poor

WHAT DOES THE LITERATURE SAY?

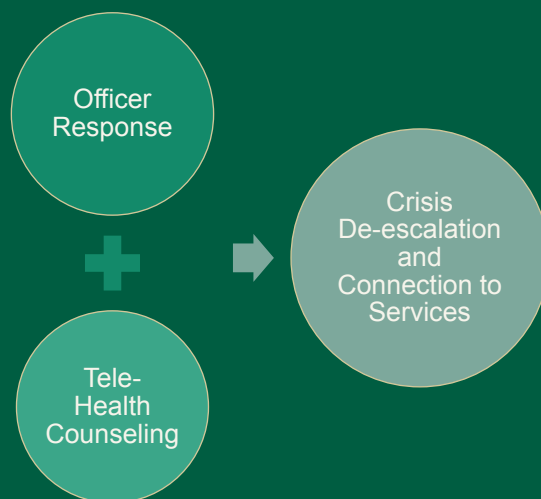
7



8

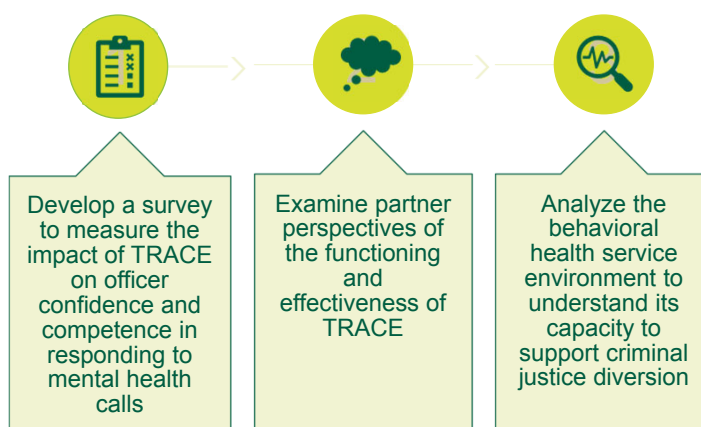
MODEL 1: FRONT-END RESPONSE

Largo Police Department and Directions for Living Telehealth
Response Assistance for Crisis and Evaluation (TRACE) Program



9

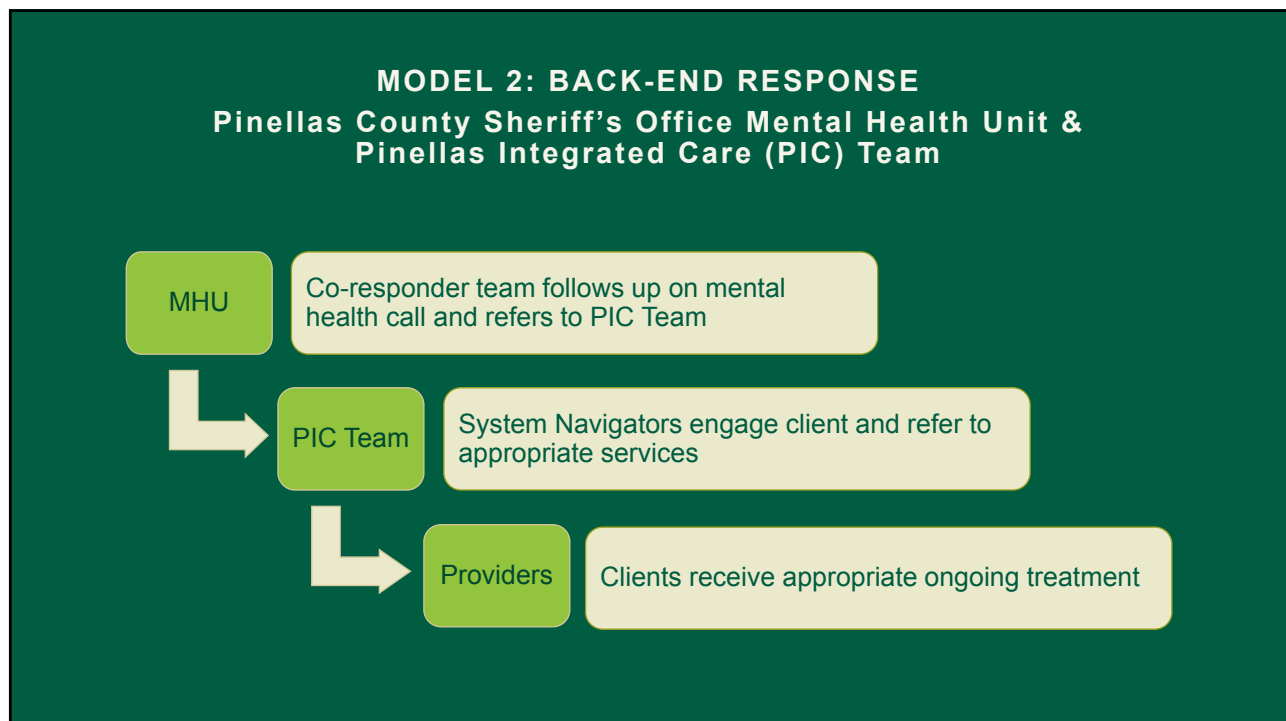
OVERVIEW OF TRACE STUDY



10



11



12

PCSO MHU/ PIC TEAM OUTCOMES

**41.5% decrease
in arrests (short-
term)**

**10% decrease in
arrests after an
entire year**

**44.4% decrease
in Baker Act
exams**

**44% improved in
substance use;
42% improved in
mental health**

**FARS: 62.3% improved
Disability; 71% Emotionality;
73% Relationships; 62%
Personal Safety**

13

CONSIDERATIONS

14

CONSIDERATIONS FOR PROGRAM DESIGNS

At which point(s) should an intervention be focused?

- During crisis, follow-up, long-term

How do models build in system coordination and collaboration?

- Co-located staff, formal partnerships, collaborative decision making

What strategies may help with engagement?

- Mental health specialist, system navigation, case management, peer specialists

What data elements are needed for comprehensively assessing outcomes?

- Ability to coordinate data systems, identification of target outcomes, understanding of baseline patterns

How will the program be sustainable?

- Government/foundation grants, agency funding, policy and system-wide changes

15

RECOMMENDATIONS

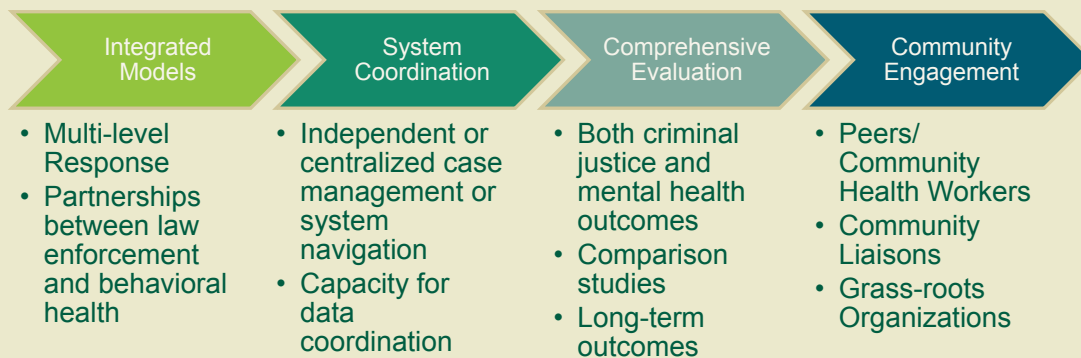
16

BEST PRACTICES FOR IMPLEMENTATION

- Establishing Readiness
 - Having shared vision for target population and goals
 - Using racial equity lens to assess/ensure representation
 - Formalizing agreements among partners
 - Determining decision-makers and involvement of other stakeholders
 - Ensuring data systems have capacity to measure impact
 - Continuous identification of funding from the beginning
 - Identifying long-term plans for change

17

FUTURE DIRECTIONS FOR INTERVENTIONS



18

RESOURCES

Bureau of Justice Administration Police-Mental Health Collaboration Toolkit: <https://bja.ojp.gov/program/pmhcn#gov4e>

Mental Health America Position Statement on Responding to Behavioral Health Crises: <https://mhanational.org/issues/position-statement-59-responding-behavioral-health-crises>

BJA Justice and Mental Health Collaboration Program Funding: <https://bja.ojp.gov/program/justice-and-mental-health-collaboration-program-jmhcp/funding>

National Implementation Research Network Implementation Stages Planning Tool: <https://nirn.fpg.unc.edu/sites/nirn.fpg.unc.edu/files/resources/Implementation%20Stages%20Planning%20Tool%20v8%20NIRN%20only%20Fillable.pdf>

National Implementation Research Network Hexagon Tool: https://nirn.fpg.unc.edu/sites/nirn.fpg.unc.edu/files/imce/documents/NIRN%20Hexagon%20Discussion%20Analysis%20Tool_September2020_1.pdf

Crisis Intervention Team International: <https://www.citinternational.org/Learn-About-CIT>

19

REFERENCES

- Abramson, M. F. The criminalization of mentally disordered behavior: Possible side-effect of a new mental health law. *Psychiatric Services*. 1972;23(4):101-105.
- Borum, R., Deane, M. W., Steadman, H. J., et al. Police perspectives on responding to mentally ill people in crisis: Perceptions of program effectiveness. *Behavioral Sciences & the Law*. 1998;16(4): 393-405.
- Bureau of Justice Assistance (BJA). Police-Mental Health Collaboration. US Dept of Justice, Office of Justice Programs, & United States of America; 2018.
- Epperson, M. W., Wolff, N., Morgan, R. D., et al. Envisioning the next generation of behavioral health and criminal justice interventions. *International Journal of Law and Psychiatry*. 2014;37(5): 427-438.
- Lamb, H. R., & Weinberger, L. E. Persons with severe mental illness in jails and prisons: A review. *Psychiatric Services*. 1998;49(4): 483-492.
- Lurigio, A. J. Persons with serious mental illness in the criminal justice system: Background, prevalence, and principles of care. *Criminal Justice Policy Review*. 2000;11(4): 312-328.
- Martin, M. S., Dorken, S. K., Wamboldt, A. D., et al. Stopping the revolving door: A meta-analysis on the effectiveness of interventions for criminally involved individuals with major mental disorders. *Law and Human Behavior*. 2011;36(1): 1-15.
- Parker, A., Scantlebury, A., Booth, A., et al. Interagency collaboration models for people with mental ill health in contact with the police: a systematic scoping review. *BMJ Open*. 2018;8(3):e019312.
- Peterson, J., & Densely, J. Is crisis intervention team (CIT) training evidence-based practice? A systematic review. *Journal of Crime and Justice*. 2018;41(5):521-534.
- Prins, S. J. Prevalence of mental illnesses in US state prisons: A systematic review. *Psychiatric Services*. 2014;65(7):862-872.
- Steadman, H. J., Osher, F. C., Robbins, P. C., et al. Prevalence of serious mental illness among jail inmates. *Psychiatric Services*. 2009;60(6):761-765.
- Teplin, L. A. Criminalizing mental disorder: The comparative arrest rates of the mentally ill. *American Psychologist*. 1984;39(7):794-803.
- Wood, J. D., & Watson, A. C. Improving police interventions during mental health-related encounters: Past, present and future. *Policing & Society*. 2017;27:289-299.
- Wood, J. D., Watson, A. C., & Barber, C. What can we expect of police in the face of deficient mental health systems? Qualitative insights from Chicago police officers. *Journal of Psychiatric and Mental Health Nursing* 2021;28(1):28-42.

20

THANK YOU!

Anna Abella
aldavids@usf.edu

Monica Landers
mdlander@usf.edu