

# Hillsborough Room

MSC 2709 | Second Floor

[See Building Floor Plan >](#)

2,262 sq. ft.



## Room Features

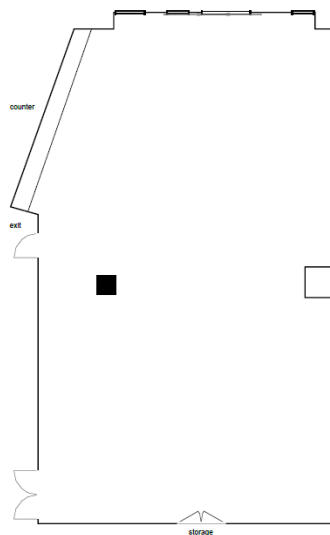
- Carpeted
- Built-In Counter Space
- Please note that this room contains a structural pillar, indicated on the floor plan below

## Audio/Visual Features

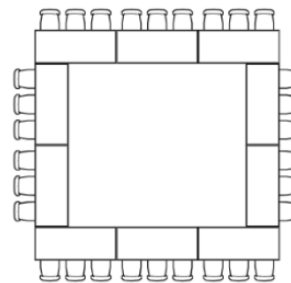
- Projector & Screen
- Speakers
- HDMI Cable
- Airmidia – Wireless Connection to Projector
- In-Room Computer (Additional Charge)
- Microphone Capability

## Floor Plan

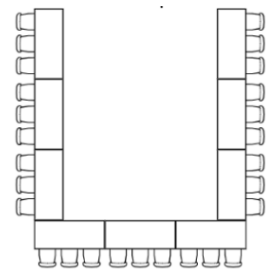
Hillsborough Room – MSC 2709



## Hollow Square



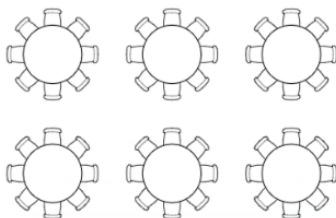
## U-Shape



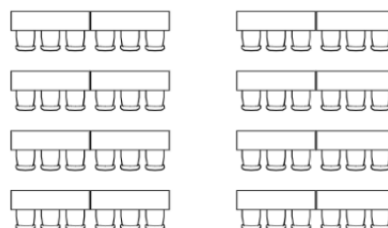
## Theater



## Banquet



## Classroom



## Capacities by Setup Type

Banquet Rounds: Up to 104 people  
Theater: Up to 153 people  
Hollow Square: Up to 54 people  
U-Shape: Up to 48 people  
Classroom: Up to 81 people

Maximum capacities reflected above may not be possible depending on your event needs. Talk with a representative for the most accurate information.



**MARSHALL STUDENT CENTER EVENT & MEETING SERVICES**  
813-974-5213 • MSC 4100  
sa-ems@usf.edu • usf.edu/msc



**UNIVERSITY of  
SOUTH FLORIDA**  
Student Success