

# Oak Room

MSC 3707 | Third Floor

[See Building Floor Plan >](#)

2,479 sq. ft.



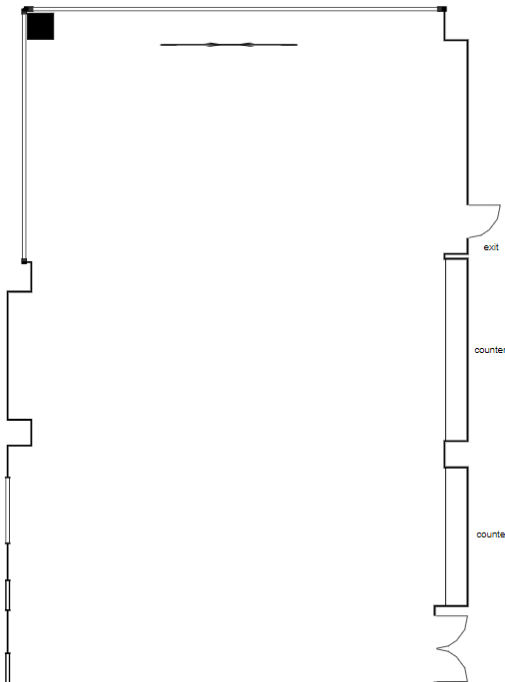
## Room Features

- Carpeted
- Built-In Counter Space

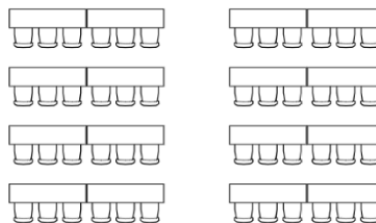
## Audio/Visual Features

- Projector & Screen
- Speakers
- HDMI Cable
- Airmidia – Wireless Connection to Projector
- In-Room Computer (Additional Charge)
- Microphone Capability
- Conference Phone Capability

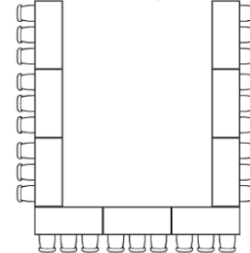
**Floor Plan**  
Oak Room – MSC 3707



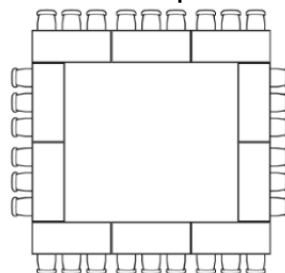
### Classroom



### U-Shape



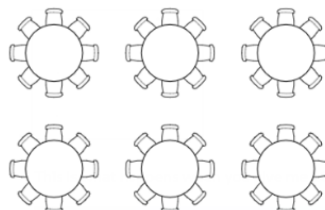
### Hollow Square



### Theater



### Banquet



### Capacities by Setup Type

Banquet Rounds: Up to 112 people  
Theater: Up to 160 people  
Hollow Square: Up to 66 people  
U-Shape: Up to 54 people  
Classroom: Up to 114 people

Maximum capacities reflected above may not be possible depending on your event needs. Talk with a representative for the most accurate information.



**MARSHALL STUDENT CENTER EVENT & MEETING SERVICES**  
813-974-5213 • MSC 4100  
sa-ems@usf.edu • usf.edu/msc



**UNIVERSITY of  
SOUTH FLORIDA**  
Student Success