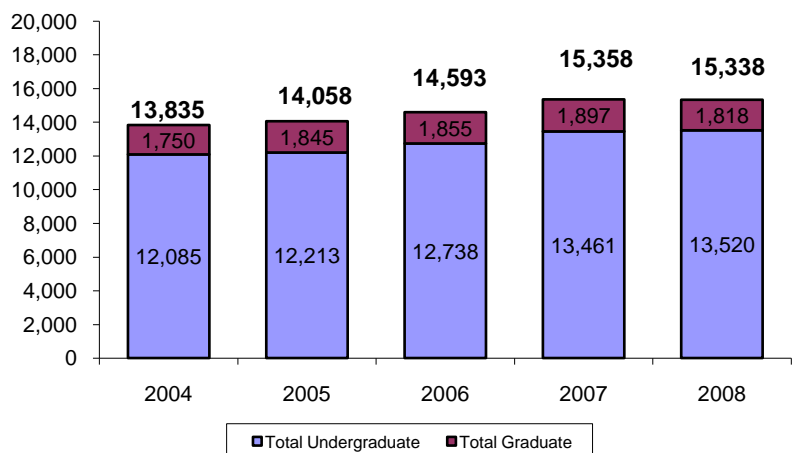


Arts & Sciences

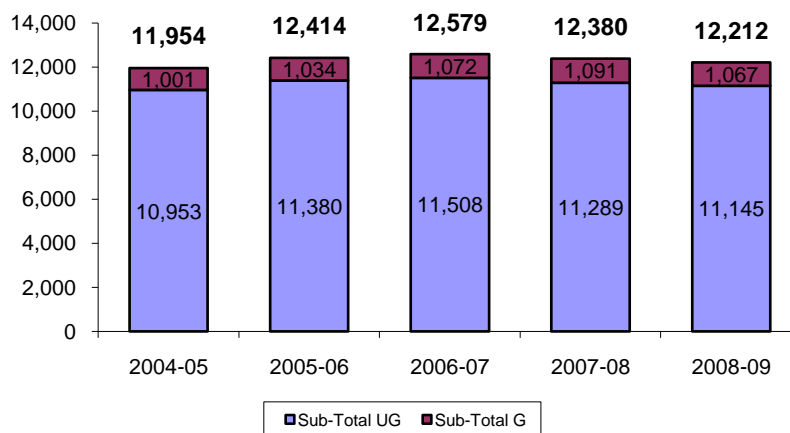
2008-2009 College Portfolio

Executive Summary

Fall Student Headcount by Level

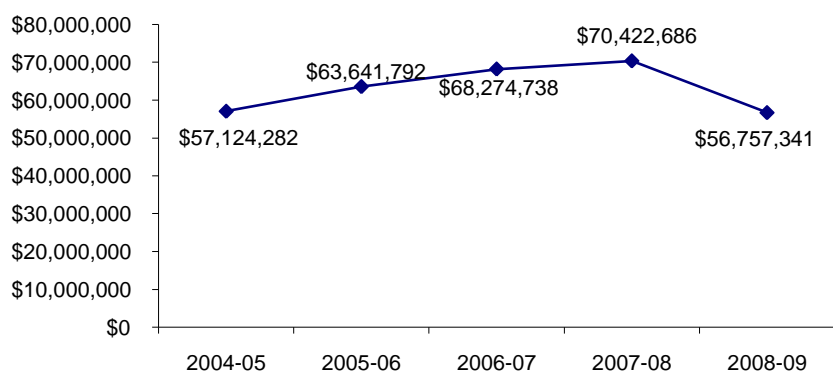


Fundable FTE

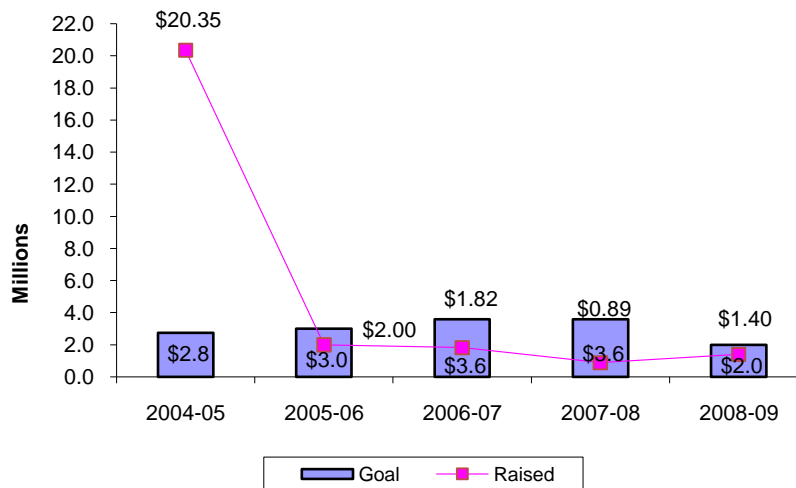


2008/09 academic year data are estimated as of Spring 2009 preliminary benchmark.

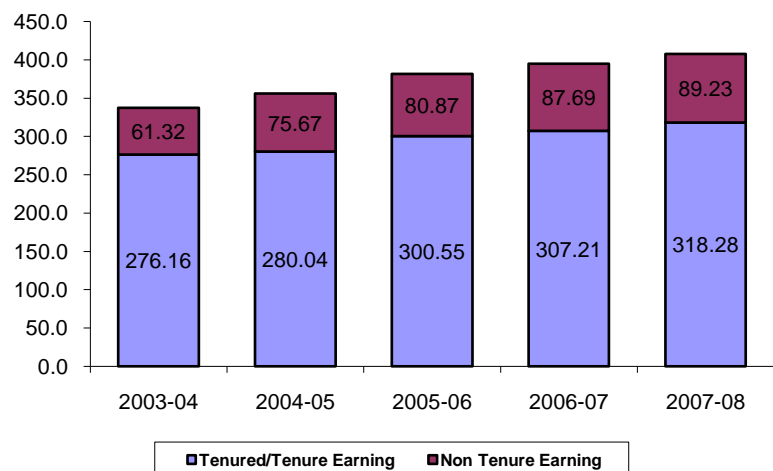
E&G Expenditures



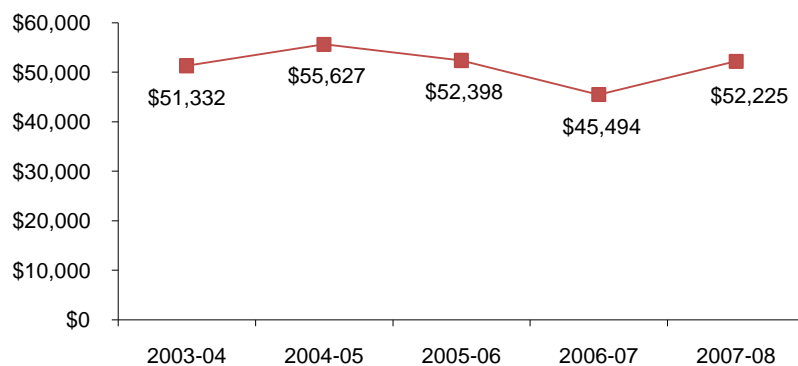
Fund Raising



Faculty FTE by Tenure Status

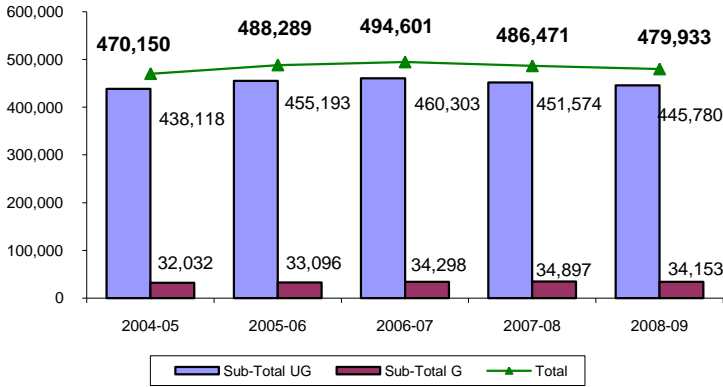


R&D Expenditure Per Tenured/Tenure Earning Faculty FTE

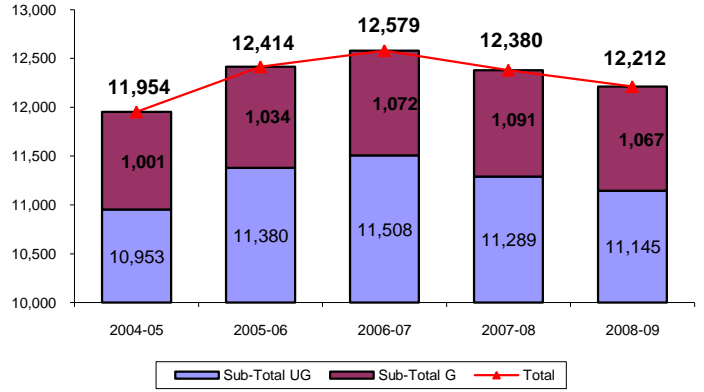


Arts & Sciences 2008-2009 College Portfolio SCH/FTE Data

Fundable Student Credit Hours



Fundable FTE



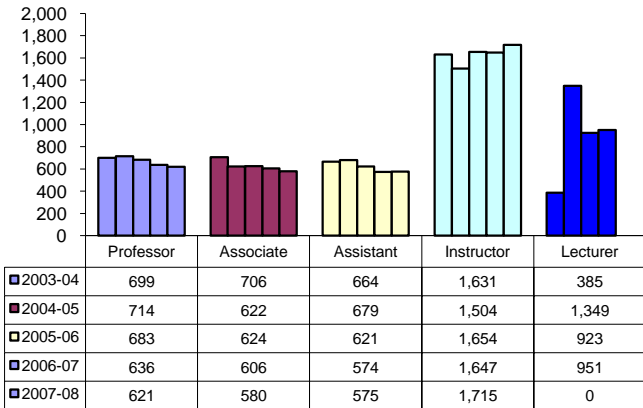
2008/09 academic year data are estimated as of Spring 2009 preliminary benchmark.

SCH Levels	2004-05	2005-06	2006-07	2007-08	2008-09
Lower Level	279,815	288,504	289,562	280,896	268,278
Upper Level	158,303	166,689	170,741	170,678	177,502
Sub-Total UG	438,118	455,193	460,303	451,574	445,780
Grad I	22,980	23,961	23,027	23,219	22,654
Grad II	9,052	9,135	11,271	11,678	11,499
Sub-Total G	32,032	33,096	34,298	34,897	34,153
Total	470,150	488,289	494,601	486,471	479,933

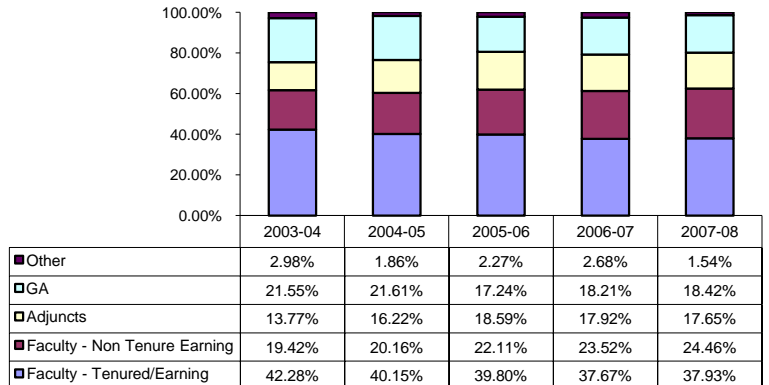
FTE Levels	2004-05	2005-06	2006-07	2007-08	2008-09
Lower Level	6,995	7,213	7,239	7,022	6,707
Upper Level	3,958	4,167	4,269	4,267	4,438
Sub-Total UG	10,953	11,380	11,508	11,289	11,145
Grad I	718	749	720	726	708
Grad II	283	285	352	365	359
Sub-Total G	1,001	1,034	1,072	1,091	1,067
Total	11,954	12,414	12,579	12,380	12,212

SCH Levels	Estimated SCH 2008/09	SCH Target 2008/09	Above or Below Target SCH	Estimated FTE 2008/09	FTE Target 2008/09	Above or Below Target FTE	SCH Target 2009/10	FTE Target 2009/10	FTE Needed to reach Target 2009/10	SCH Needed to reach Target
Lower Level	268,278	282,600	-14,322	6,707	7,065	-358	285,320	7,133	426	17,042
Upper Level	177,502	209,120	-31,618	4,438	5,228	-790	211,160	5,279	841	33,658
Sub-Total UG	445,780	491,720	-45,940	11,145	12,293	-1,149	496,480	12,412	1,268	50,700
Grad I	22,654	31,744	-9,090	708	992	-284	33,152	1,036	328	10,498
Grad II	11,499	15,104	-3,605	359	472	-113	15,168	474	115	3,669
Sub-Total G	34,153	46,848	-12,695	1,067	1,464	-397	48,320	1,510	443	14,167
Total	479,933	538,568	-58,635	12,212	13,757	-1,545	544,800	13,922	1,710	64,867

SCH Per Ranked Faculty FTE

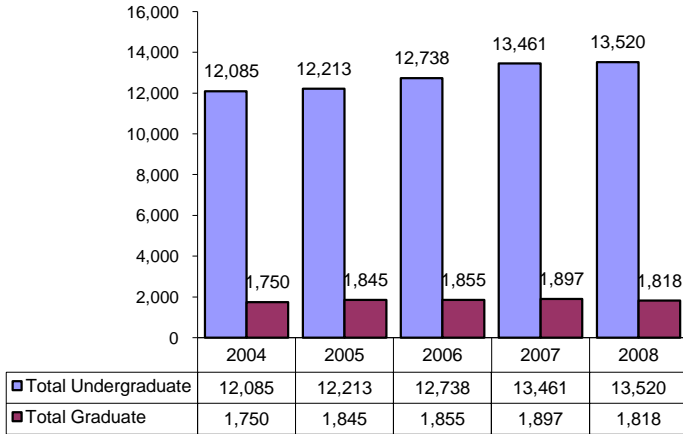


Percentage of Student Credit Hours by Instructor Type

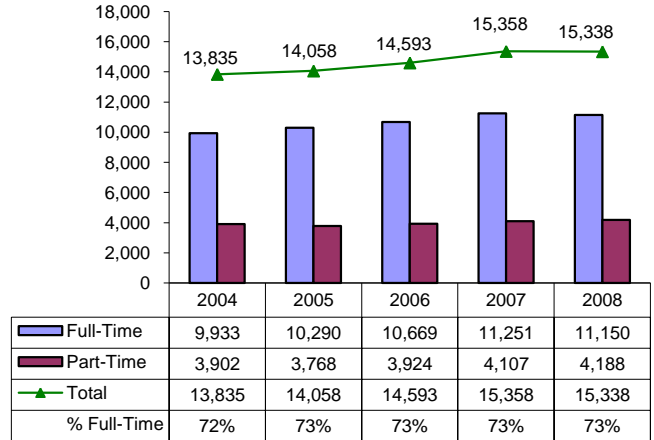


Arts & Sciences 2008-2009 College Portfolio Student Headcount

Fall Student Headcount by Level

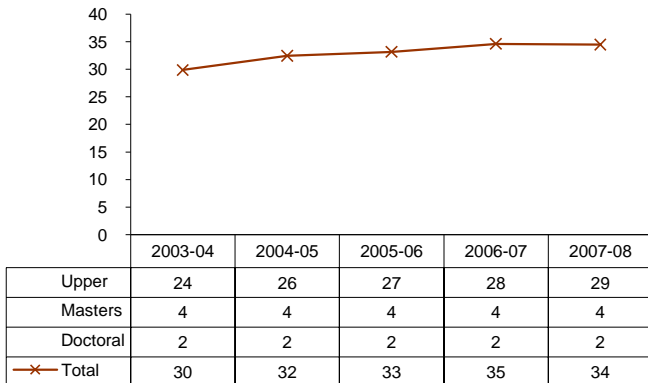


Full Time and Part Time Fall Student Headcount

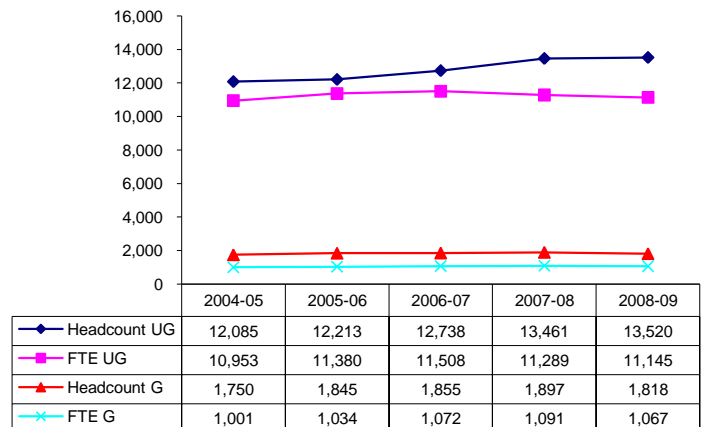


	<u>2004</u>		<u>2005</u>		<u>2006</u>		<u>2007</u>		<u>2008</u>	
	#	%	#	%	#	%	#	%	#	%
Total Undergraduate	12,085	87.4%	12,213	86.9%	12,738	87.3%	13,461	87.6%	13,520	88.1%
Total Graduate	1,750	12.6%	1,845	13.1%	1,855	12.7%	1,897	12.4%	1,818	11.9%
Total	13,835	100.0%	14,058	100.0%	14,593	100.0%	15,358	100.0%	15,338	100.0%

**Declared Majors
Student Headcount Per T/TE Faculty FTE**

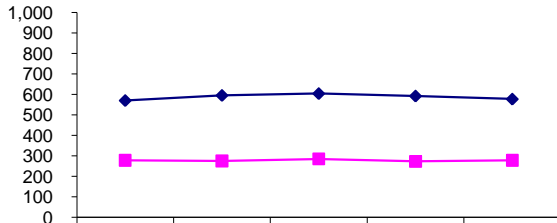


Headcount Growth vs FTE Growth



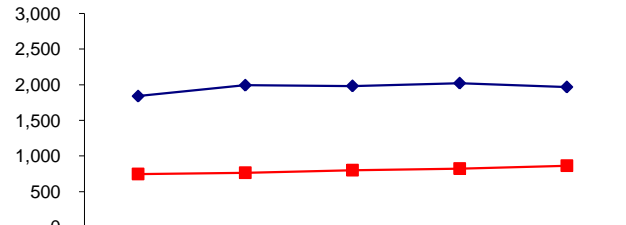
Arts & Sciences 2008-2009 College Portfolio Courses/Degrees

Fall Unique Courses



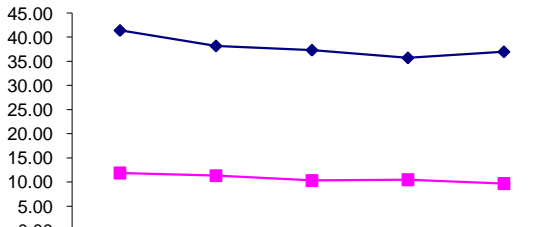
	2004	2005	2006	2007	2008
Undergraduate	570	595	604	592	577
Graduate	278	275	285	273	278
Total	848	870	889	865	855

Fall Sections



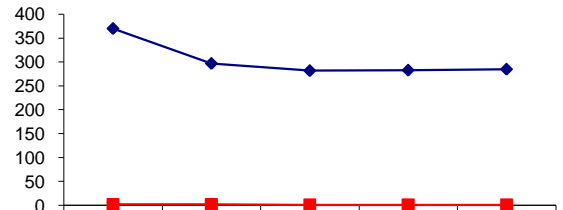
	2004	2005	2006	2007	2008
Undergraduate	1,840	1,993	1,983	2,022	1,968
Graduate	746	763	799	821	863
Total	2,586	2,756	2,782	2,843	2,831

Fall Average Class Size



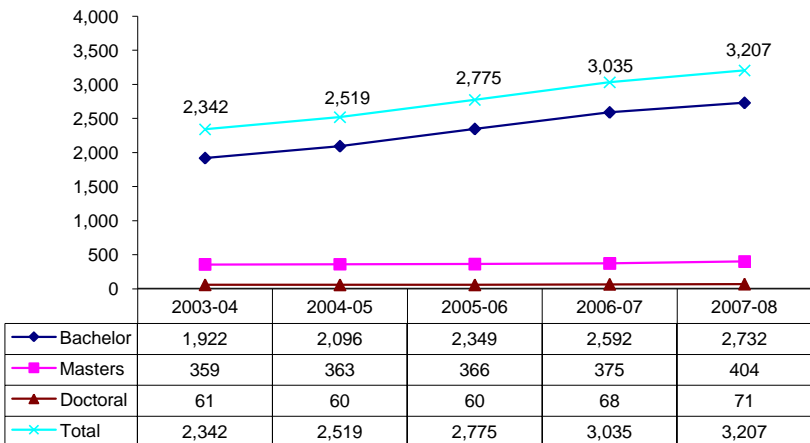
	2004	2005	2006	2007	2008
Undergraduate	41.42	38.20	37.33	35.73	36.99
Graduate	11.90	11.34	10.34	10.52	9.70
Total	36.86	34.23	33.32	32.01	32.70

Number of Fall Sections Greater Than or Equal to 50



	2004	2005	2006	2007	2008
Undergraduate	370	297	282	283	285
Graduate	2	2	1	1	1
Total	372	299	283	284	286

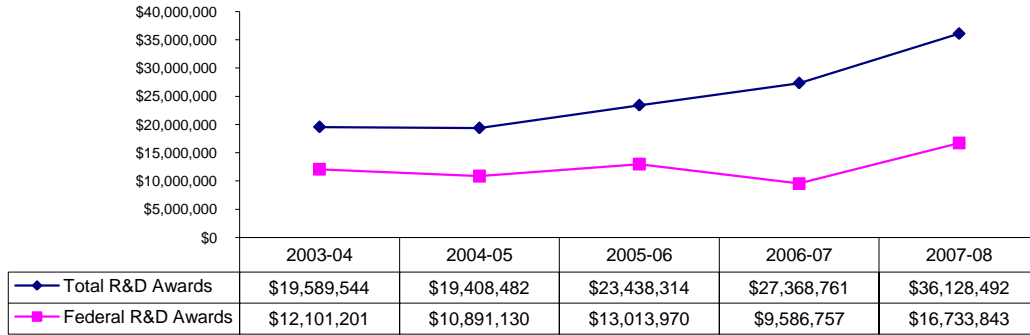
Degrees Awarded



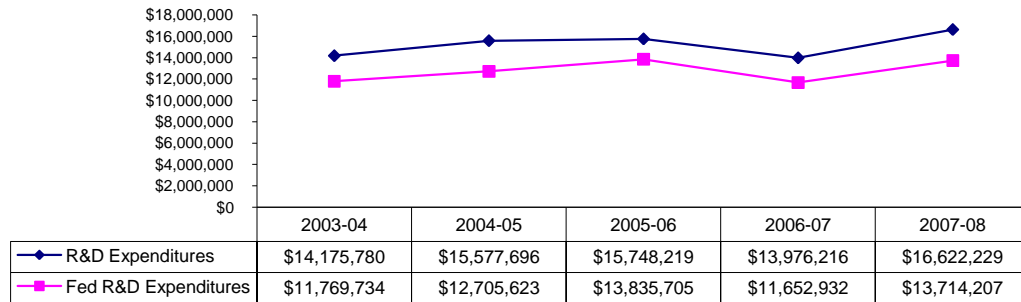
	2003-04	2004-05	2005-06	2006-07	2007-08
Bachelor	1,922	2,096	2,349	2,592	2,732
Masters	359	363	366	375	404
Doctoral	61	60	60	68	71
Total	2,342	2,519	2,775	3,035	3,207

Arts & Sciences 2008-2009 College Portfolio Awards/Expenditures

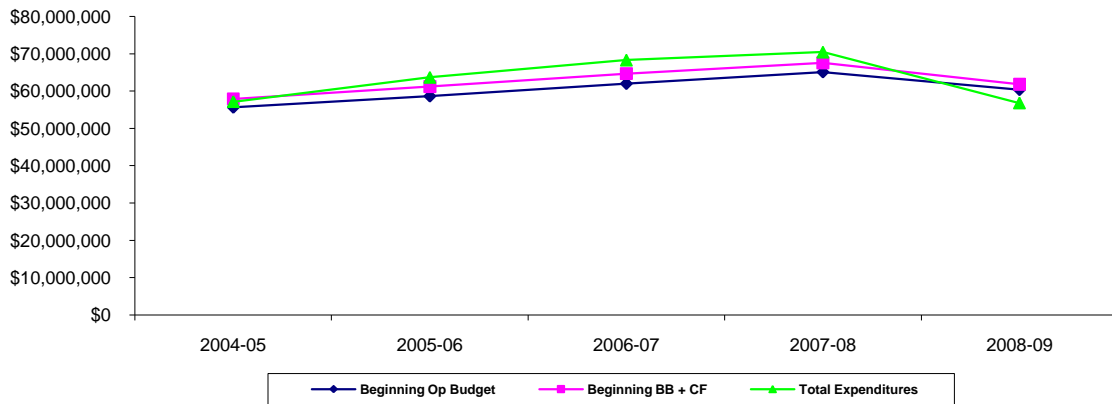
R&D Awards



R&D Expenditures



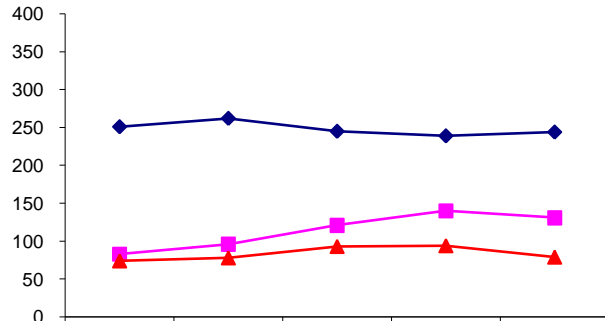
E&G Budget vs Expenditure



	2004-05	2005-06	2006-07	2007-08	2008-09
Beginning Op Budget	\$55,624,184	\$58,607,370	\$61,950,047	\$65,052,600	\$60,330,524
Beginning Carryforward	\$2,236,206	\$2,588,884	\$2,704,777	\$2,505,975	\$1,494,879
<i>Beginning BB + CF</i>	\$57,860,390	\$61,196,254	\$64,654,824	\$67,558,575	\$61,825,403
Total Expenditures	\$57,124,282	\$63,641,792	\$68,274,738	\$70,422,686	\$56,757,341

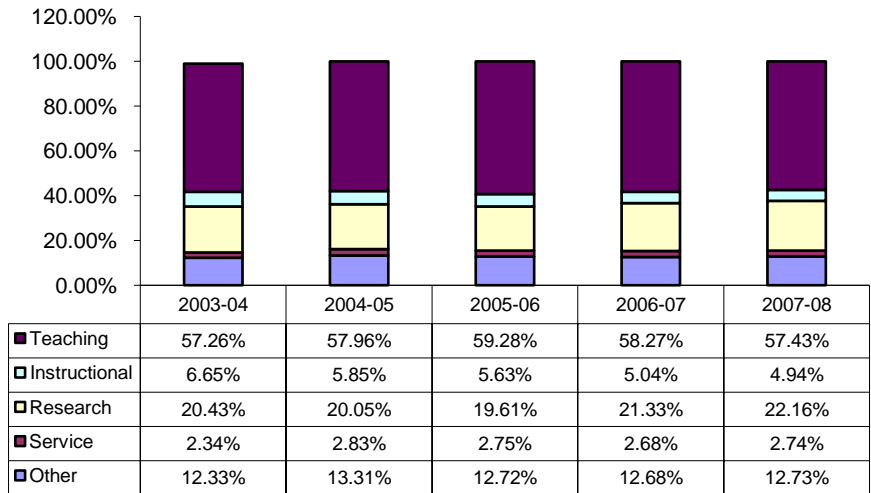
Arts & Sciences 2008-2009 College Portfolio Faculty Activity

Fall Instructional Faculty Headcount

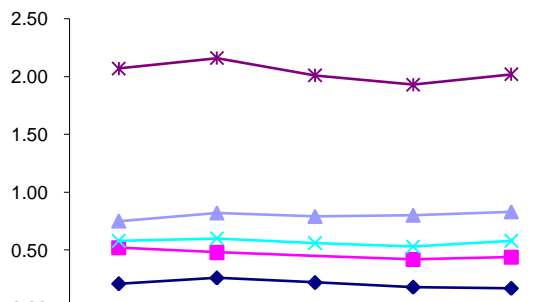


	2004	2005	2006	2007	2008
Tenured	251	262	245	239	244
Tenure Earning	83	96	121	140	131
Non Tenure Earning	74	78	93	94	79
Total	408	436	459	473	454

Percentage of Activity for Ranked Faculty by Activity Type

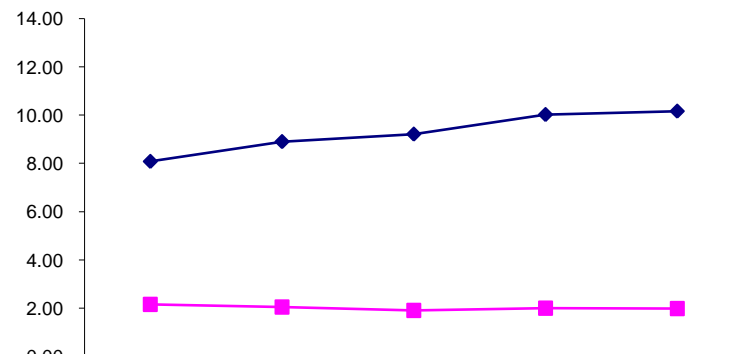


Fall Sections Per Tenured/Tenure Earning Faculty FTE



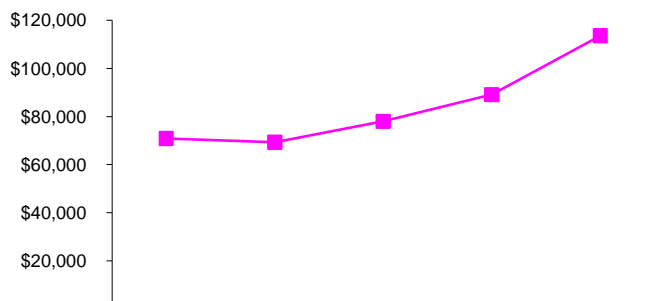
	2004	2005	2006	2007	2008
Lab/Dsc/Rec Sections	0.21	0.26	0.22	0.18	0.17
Lower Level	0.52	0.48	0.45	0.42	0.44
Upper Level	0.75	0.82	0.79	0.80	0.83
Graduate	0.58	0.60	0.56	0.53	0.58
Total	2.07	2.16	2.01	1.93	2.02

Degrees Per Tenured/Tenure Earning Faculty FTE



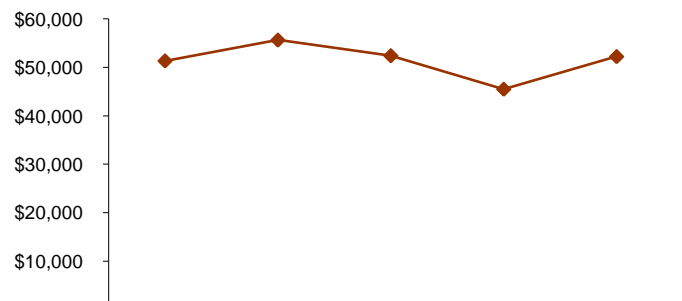
	2003-04	2004-05	2005-06	2006-07	2007-08
Undergraduate	8.09	8.91	9.22	10.03	10.17
Graduate	2.16	2.05	1.91	2.01	1.99
Total	10.25	10.96	11.13	12.04	12.16

R&D Awards Per Tenured/Tenure Earning Faculty FTE



	2003-04	2004-05	2005-06	2006-07	2007-08
R&D Awards	70,935	69,306	77,985	89,088	113,512

R&D Expenditures Per Tenured/Tenure Earning Faculty FTE



	2003-04	2004-05	2005-06	2006-07	2007-08
Tenured/Tenure Earning	\$51,332	\$55,627	\$52,398	\$45,494	\$52,225