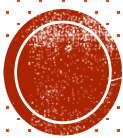


ACTIVISM MATTERS: Scholarship, Engagement and Action!


February 18-19, 2016

USF Institute on Black Life





ESTABLISHED IN 1986, THE **INSTITUTE ON BLACK LIFE** IS ACTIVELY ENGAGED IN A BROAD RANGE OF RESEARCH PROJECTS, UNIVERSITY-BASED EVENTS, AN ANNUAL RESEARCH CONFERENCE AND COLLABORATIVE PROJECTS WITH ORGANIZATIONS IN THE GREATER TAMPA BAY COMMUNITY. IBL IS THE ONLY PROGRAM OF ITS KIND AT A MAJOR UNIVERSITY IN FLORIDA AND IS ALWAYS IN DEMAND AS A SOURCE OF KNOWLEDGE ON THE GLOBAL BLACK EXPERIENCE.



IBL STRIVES TO EDUCATE THE PUBLIC ABOUT HISTORICAL, CULTURAL, POLITICAL AND ECONOMIC ISSUES RELEVANT TO PEOPLE OF AFRICAN DESCENT. THROUGH THE **CENTER FOR AFRICA AND THE AFRICAN DIASPORA**, IBL DEVELOPS AND SUPPORTS PROJECTS FOCUSING ON THE AFRICAN CONTINENT AND THE WORLDWIDE DIASPORA. THE CENTER HAS ALSO ESTABLISHED COLLABORATIVE RESEARCH PARTNERSHIPS WITH AFRICAN AND CARIBBEAN SCHOLARS.



Institute on Black Life

Bridging the University and the Community

USF UNIVERSITY OF
SOUTH FLORIDA

Thursday—FEBRUARY 18, 2016

9:00 a.m.—10:15 a.m. - Patel Center Auditorium

WELCOME

Cheryl Rodriguez, Ph.D., Director, USF Institute on Black Life

Creating Our Own Sanctuary:

Scholar-Activism in the Era of #BlackLivesMatter

Bianca Williams, Ph.D., University of Colorado, Boulder

The investigative thread that binds Williams' research, teaching, and service is the question "How do Black people develop strategies for enduring and resisting the effects of racism and sexism, while attempting to maintain emotional wellness?" Committed to the notion that anthropology can be an important and powerful for institutional and cultural change, Williams is a proud member of the Association of Black Anthropologists, the Association of Feminist Anthropologists, and the Society for the Anthropology of North America.

USF Student Spoken Word—Performance

Samantha Bryant, USF Mass Communications, President of the USF

Chapter, National Pan-Hellenic Council

LIFE Malcolm, USF Africana Studies



Workshop #1: Engaging Activism and Advocacy: Challenging Social Justice Inequity and the Impact on Race, Class, and Education

11:00 a.m. – 12:00 p.m. - ROOM 136

Lance Arney, Ph.D., USF Center for Community Partnerships, Moderator

Susan Greenbaum, Ph.D., USF Professor Emerita of Anthropology

H. Roy Kaplan, Ph.D., Adjunct Instructor, USF Africana Studies

Marilyn Williams, MA

This workshop will include brief presentations by three veteran activists for social justice and anti-racism. They will discuss the elements and challenges of working for change in the face of steep opposition and both willful and unconscious ignorance.



Bianca C. Williams is an Assistant Professor of Ethnic Studies at the University of Colorado Boulder. She received

both her B.A. and Ph.D. in Cultural Anthropology at Duke University, with a Graduate Certificate in African & African American Studies. As a feminist anthropologist, Williams' research centers on the racialized and gendered experiences of Black American women in the U.S. and Caribbean, specifically focusing on their pursuits of happiness and strategies to maintain emotional wellness.



Susan Greenbaum, Ph.D. is Professor Emerita of Anthropology at USF and founding director of Office of Community Engagement & Partnerships. She is author of *More than Black: Afro-Cubans in Tampa* and *Blaming the Poor: The Long Shadow of the Moynihan Report on Cruel Images of Poverty*.

H. Roy Kaplan, Ph.D. was the Executive Director of the National Conference of Christians and Jews for Tampa Bay and served as an advisor to President Clinton's race relations task force. In 1998, he received a National Hero of Education Award from the U.S. Department of Education for his multicultural work in Florida schools. His most recent book is *Understanding Conflict and Change in a Multicultural World*.

Marilyn Williams, M.A. is an educator, mediator and community activist, who provides informational seminars and training workshops in peace education, conflict management, and advocacy strategies for various groups. She facilitated dialogue with a United Nations supported program between university students in the Middle and Far East and students in North America and Europe.

Workshop #2

11:00 a.m.– 12:00 a.m.

ROOM 134

Taurean Wong

Act with vision: Ideas About Student Activism

The importance of student activism, black student experiences on campus and actions to be taken related to multiculturalism and acceptance.

Taurean Wong is a first year transfer student from Hillsborough Community College. A former AmeriCorps volunteer, he is a cultural studies major.



Workshop #3

11:30 a.m.– 12:30 a.m.

Auditorium

**Kevin Yelvington, Ph.D. ,
USF Department of
Anthropology**

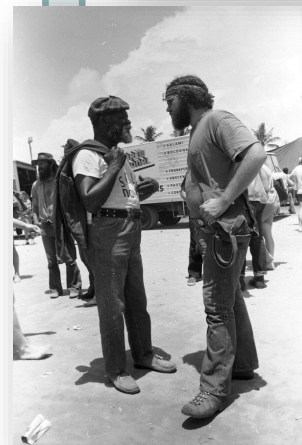
Activism Matters in the Caribbean and its Diaspora

This panel reports on ongoing activist anthropological research in the Caribbean and among its diaspora populations abroad. It engages such themes as health, education, and radical politics, all within a critical framework that links knowledge production to interventions in constituting a new kind of anthropological praxis.

"Empowering Through Knowledge: How Factors of Identity, Gender, and Sexuality Impact HPV Prevention in Caribbean Immigrant Women," by **Maisha Standifer**, Department of Anthropology, University of South Florida

"Applying Critical Pedagogy to Activist Anthropology: Using Popular Education as a Medium for Radicalizing Marginalized Youth," by **Antoine Romulus**, Department of Anthropology, University of South Florida

"Exploring the Activist/Academic Divide: Activist Research in Port-au-Prince, Haiti," by **Laura Leisinger**, Department of Anthropology, University of South Florida.



Workshop #4

11:30 a.m.– 12:30 a.m.

ROOM 140

Cecil Greek, Ph.D.

USF, Department of Sociology

Jennifer Friedman, Ph.D.

Laurel Graham, Ph.D.

Lena Young Green

Alexis Lewis

Inadvertent Activism



The Sociology Department and the Community Engagement subgroup did not intend to become involved in activism per se. We chose to partner with the Tampa Heights Junior Civic Association because they had a number of programs in which faculty and students could become involved.

However, once the plans for TBX (interstate expansion) were announced, all of our planned activities were put on hold.

We have become part of the community activism regarding the interstate expansion, leading to a different set of priorities and activities.

Cecil Greek is Associate Professor of Sociology at USF Tampa. He joined the faculty from the Lakeland campus. His specialty areas include the history of sociology and criminology, mass media depictions of crime and deviance, and qualitative research methodologies. His new book, co-edited by Caroline K. Picart and Michael Jacobsen, is *Framing Law and Crime*.

Laurel Graham is Associate Professor and Associate Chair in the Department of Sociology at USF. She earned her Ph.D. from the University of Illinois in 1992. Dr. Graham has interests in consumer culture, food & gardening, contemporary sociological theory, gender, the sociology of scientific knowledge, the sociology of work, biography, cultural studies, and interactionism. She is the author of an historical biography of a female industrial engineer.

Jennifer Friedman is an Associate Professor of Sociology at USF. She earned her Ph.D. from Northwestern University in 1988. Dr. Friedman has focused her research on substance use, deviance, community gardening, and food studies. She has an ongoing research project titled, "Managing Family Food Consumption." She co-authored a book titled, *Surviving Heroin: Interviews with Women in Methadone Clinics*.

Lena Young Green is a board member of GreenARTery, and the Tampa Heights Civic Association. Through three mayoral administrations, the Belize native has organized neighbors to fight for safer streets, more civic participation and redevelopment of Tampa's oldest neighborhood.

Alexis Lewis is a senior majoring in Sociology with a concentration in Inequality and Social Justice and Communication with a concentration in Public Advocacy. Alexis has an interest in gender, sexuality, identity, culture and media. She is the president of the Sociology Club at USF and is part of a research team studying family food management practices.



BOOK SIGNINGS: 9:00 a.m.—1:00 p.m. Patel Center Lobby

Cheryl Rodriguez, Ph.D., Susan Greenbaum, Ph.D., H. Roy Kaplan, Ph.D., Abraham Khan, Ph.D.,
Aisha Durham, Ph.D., Bernd Reiter, Ph.D., Omotayo Jolaosho, Ph.D.

LUNCH ON YOUR OWN :
12:30 p.m. — 1:30 p.m.

USF STUDENT POSTER SESSION

1:45 p.m.—2:15 p.m., Room 134

“Sit-ins, Wade-Ins, and Kneel-Ins:
Civil Rights Activism in Florida” -

Students from Dr. Barbara Cruz’s class, **Rachel Haniff**, **Nadia Matijasevic**, **Sagan Tully** are preservice social studies teachers at the University of South Florida. Their combined interests in social science content and pedagogy have resulted in this collaboration on civil rights activism in Florida.

This poster presentation explores three forms of activism, resistance, and protest in Florida during the Civil Rights Movement: sit-ins, wade-ins, and kneel-ins. Sit-ins were primarily at lunch counters, movie theaters, and other commercial places. Wade-ins were held at public beaches and pools. Kneel-ins were staged at houses of worship. This presentation explores not only the history of these events, but also considers teaching strategies and approaches.

USF Students from Dr. Omotayo Jolaosho’s class

Mariela Noles Cotito - “Durban: policy game changer in Peru”

Lamica Garcia - "Formation"

Anthony McCray - "A possible methodology for enacting laws that reform our prison system"

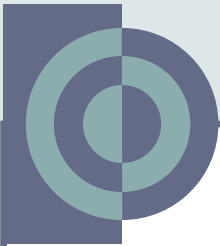
Mary McKelvie - "Everyday Anarchy: Radical Love & Community Protest"

Brianna O'Steen - "Redefining Domestic Minor Sex Trafficking in Florida: From Policy to Practice"

Rachel Preston - "Domestic Violence Shelters and Black Women's Access to Resources"

Rachel Tyree - "Grassroots Anthropology: Worker Centers, Activist Research, and Academic-Community Partnerships"





Workshop #5

2:30 p.m.—3:30 p.m.

ROOM 136

Barbara Cruz, Ph.D.,

USF Department of Teaching and Learning

Afro-Latin@s: Caribbean Connections to Tampa Bay

Barbara Cruz, Ph.D.

Nicholas Bardo - Graduate Assistant : Teaching & Learning

Latinos of African descent have a rich history in the U.S. and throughout the Americas. This session explores the unique Afro-Caribbean connections in Tampa, their historical presence, contemporary contributions, and resources for teaching.

Bárbara Cruz is Professor of Social Science Education at the University of South Florida. **Nicholas Bardo** is a doctoral student in Social Science Education at the University of South Florida. Both have research and teaching interests in global and multicultural perspectives in education.



Workshop #6

2:30 p.m.– 3:30 p.m.

ROOM 140

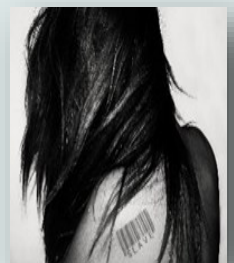
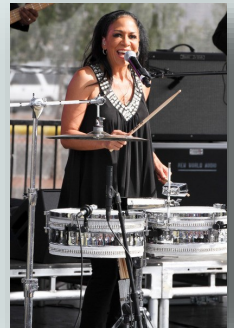
Kate E. Temoney, Ph.D.,

Visiting Instructor USF, Department of Religious Studies

Hidden Victims, Hidden Resources: The Human Trafficking of Black Women and the Activist Church

This workshop explores an often overlooked segment of victims of human trafficking--American victims of color, and in particular, Black girls and women. In addition to governmental intervention and assistance, there are many community efforts that can identify victims and coordinate assistance. One underutilized community resource is the organized church.

Kate E. Temoney is a former Student Affairs Assistant Dean of Students and is currently a Visiting Instructor in the Department of Religious Studies at the University of South Florida. Dr. Temoney earned an M.A. and Ph.D. in religion from Florida State University, a M.Ed. from The College of William & Mary, and a B.A from Wake Forest University. Her most recent presentations and publications are on human rights discourse and film; the intersections of religion, genocide, and sexual violence; the Rwandan genocide; and Jainism and warfare.



Friday, February 19, 2016

ROBERT W. SAUNDERS SR. LIBRARY

1505 N. Nebraska Avenue

Tampa, Florida 33602

***Working Together Across Generations:
Activism, Issues and Collaboration***

Cheryl Rodriguez, Ph.D.
Director, USF Institute on Black Life
Moderator



Carolyn Collins, Ph.D.

After graduating from Howard W. Blake High School in Tampa, Dr. Collins earned a degree in Foods, Nutrition, and Institutional Management from Florida A&M University, a Masters of Public Administration in Health Services Management and Administration from Golden Gate University. Dr. Collins has been extremely active in advocacy efforts on behalf of the African American community in the Tampa Bay area. She is past-president of Tampa Chapter of the NAACP. Dr. Collins is a strong advocate for improving public health in the Tampa community and has been actively involved in the Hillsborough County Head Start Program. Her work as a public healthcare advocate, champion of education, and a broadcaster stand as a powerful testament to a lifetime of public service.



Chloe Coney

A thirty year veteran and advocate for community building and revitalizing of neighborhoods, Ms. Coney conducts workshops across the country. She has a B.A. in Sociology/Corrections from Florida A & M University and a Master's Degree in Biblical Counseling from Florida Beacon Bible College. Chloe Coney is the District Director for Congresswoman Kathy Castor, who represents the 14th District of Florida. She was the Founder and the First Chief Executive Officer of the Corporation to Develop Communities, a community-based organization whose mission is to raise the economic, educational, and social levels of the residents of economically depressed areas of Hillsborough County.

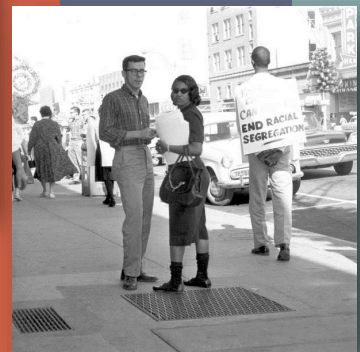


USF Student Panel:

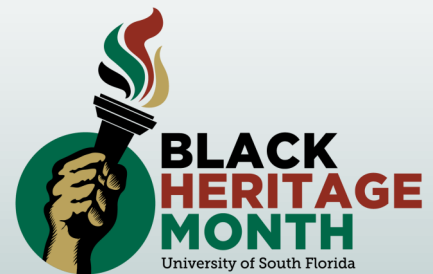
Rosemirtha Badeau—*Fanm Kreyol, Inc.*

Christi Owiye—*Black Female Development Circle, Black Student Union*

Taurean Wong—*Cultural Studies major, former AmeriCorps volunteer*



Resource: <http://www.nytimes.com/interactive/projects/cp/national/unpublished-black-history/thurgood-marshall-in-harlem-episcopal-church-1962>



INSTITUTE ON BLACK LIFE AND THE CENTER FOR AFRICA AND THE DIASPORA

University of South Florida, 4202 East Fowler Avenue, Tampa, Florida 33620 <http://IBL.EdU>