

Race and Place: Cultural Landscapes of Black Life in America

A National Conference of the University of South Florida
Institute on Black Life

The African–American Neighborhoods project is an initiative that explores the social forces that contributed to the development of historically Black communities in Tampa. The project examines the historical and present–day significance of these communities to original homeowners and long–time residents. By focusing on the hidden histories and memories of placemaking and institution–building, the project illuminates the ways that African–Americans created a sense of place >> and a sense of self in their communities.







Central Avenue Area, 2014



Central Avenue >>

The Jackson House

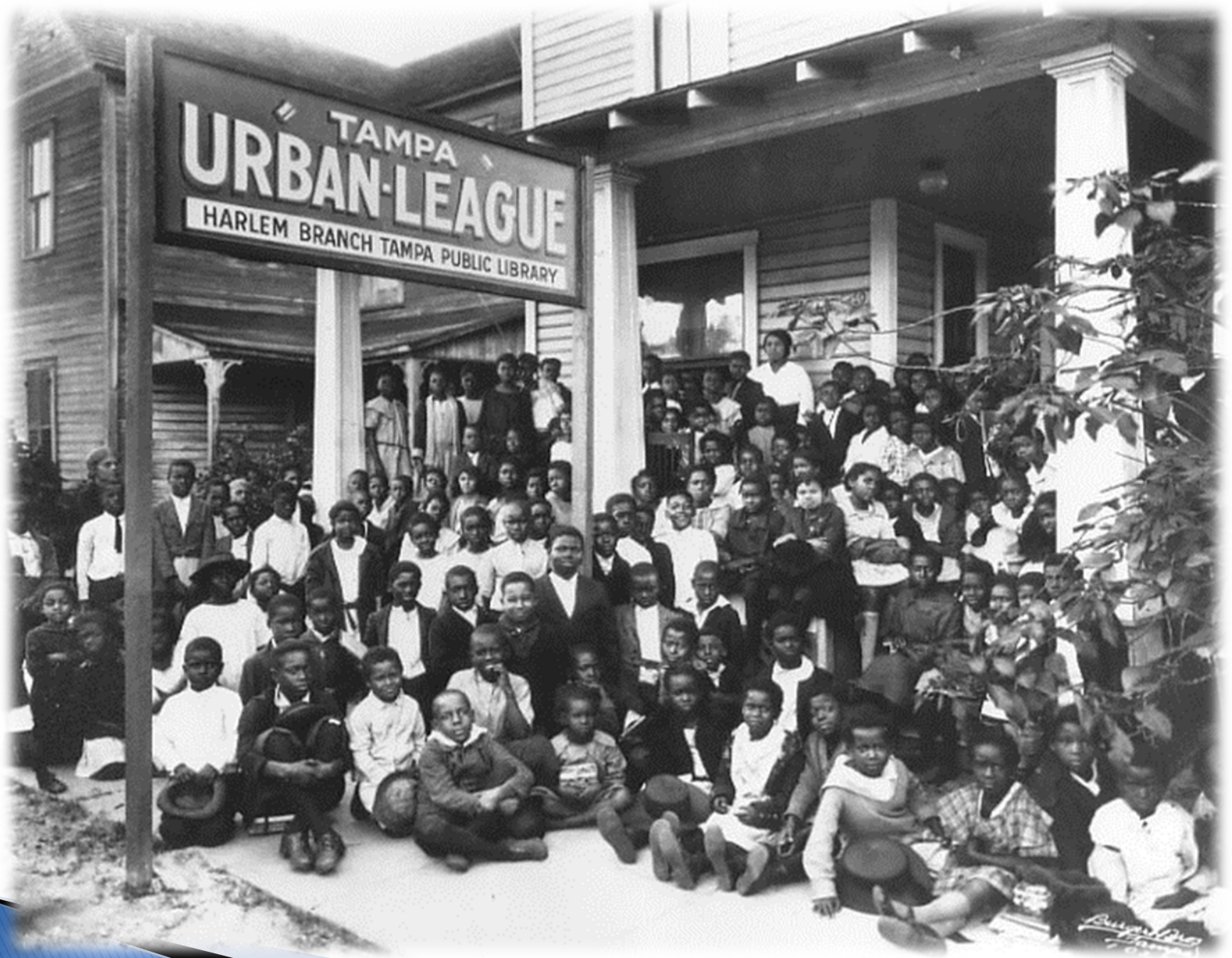


Dobyville 1956 >>



teachers >>

March 24, 1946





Blake High School >>

1956



Christina Meacham School gathering >>

1954



George Washington Carver Jr. High – May Day 1946



Electro Photo Co., 909 Franklin Street,
TAMPA, FLA.





BEALSVILLE

The community that became Bealsville was settled in 1845 by arriving slaves. The first general store was operated by James Power Carter, George Smith, and William Dyer. Other early settlers included Robert Dyer, Albert Scarborough, and the husband and wife of James Scarborough. The settlers from Bealsville moved to Bealsville by the late 1850s. The community was founded by James Scarborough, who had been a slave of James Scarborough. After being freed, he moved to Bealsville and established a general store. He also operated a plantation and raised slaves. After being freed, he moved to Bealsville and established a general store. He also operated a plantation and raised slaves.

In 1853, many of the original settlers, who sought to leave the area of the plantation, were sold to other plantations. Some of the original settlers, who sought to leave the area of the plantation, were sold to other plantations. Some of the original settlers, who sought to leave the area of the plantation, were sold to other plantations.



St. Peter Claver School

Mary McLeod Bethune and students, 1905





Carver City – Lincoln Gardens





John F. Kennedy with Florida NAACP members, including Robert W. Saunders, circa 1960

PERSPECTIVES IN BLACK

A newsletter for black students at the University of South Florida
Fall 1984

MEET KARL BROWN: STUDENT BODY PRESIDENT



Oracle photo by Billy O'Sullivan

Student Body President Karl Brown has a very clear objective as leader of USF's Student Government Association — making sure all students are represented and that the administration hears the student voice.

Brown is an activist who believes in dealing with issues and presenting them. "I think it's a responsibility to the students to see that students are represented," Brown says. Brown also says that sometimes student rights aren't foremost, and "if you look at it, the university wouldn't exist without us (the students). Students are on the bottom and that should be turned around."

Brown is a political science major with a minor in African studies. He hopes to go to law school or pursue a career in public relations.

Brown has always been active. In high school he was involved in many service organizations as well as starring on Miami's Hialeah Lakes' track and football teams.

Before Brown was elected SGA president, he was president of the Black Student Union. One of the BSU's major accomplishments under Brown's leadership was the dedication of the Martin Luther King Plaza in front of the University Center.

A man of Karl Brown's charisma and style will be missed when he leaves USF, but if you know Karl you can believe for sure his presence will always be felt. Good luck, Karl.

by Tony Grier, from Oracle articles
by Connie Brown and Carolyn Mblad.

Bradley, BasketBulls begin season

THIS IS IT!!!! Your last chance to see CHARLIE "CB" BRADLEY and COMPANY perform before your very eyes. Enjoy the excitement Tuesday the 20th of November, when the Bulls host the Yugoslavian National team at 7:30 p.m. in the Sun Dome. The Bulls open the regular season at home against Belhune Cookman College on the 26th of November. Game time is 7:30 p.m.

Bradley, one of the premier forwards in the country, is being scouted by many National Basketball Association teams. So let's pack the house this year. Admission is free for USF students with a valid I.D.



CONGRATULATIONS TO ANGELA MIMS



Oracle photo by
Vance Pedulla

Angela Mims, USF's Miss Uhuru for 1984-85, was first runner-up in the 14th Annual Miss Black Florida Pageant in August. The pageant was shown Sept. 3 on Channel 3. The contestants were judged on talent, swimsuit competition and on an interview.

Mims is a junior majoring in music education and was sponsored by the Black Student Union. Keep up the good work, Angela and BSU; we are all proud of you.

Tony Grier

INTRODUCING "PERSPECTIVES IN BLACK"

This issue inaugurates a new publication at USF — "Perspectives in Black," a newsletter for USF's black students published by the Office of Student Affairs.

Because we believe that black students have an important role in USF's academic and cultural affairs, we want to publicize several programs aimed at meeting black students' special needs. This newsletter will feature some helpful staff people, outstanding students and special programs — all of which can help you meet your own educational and career goals.

If you have any comments on this issue or ideas for future issues, please contact Troy Collier, Assistant Vice President for Student Affairs, ADM 151. And special thanks to Tony Grier, who helped put this newsletter together.



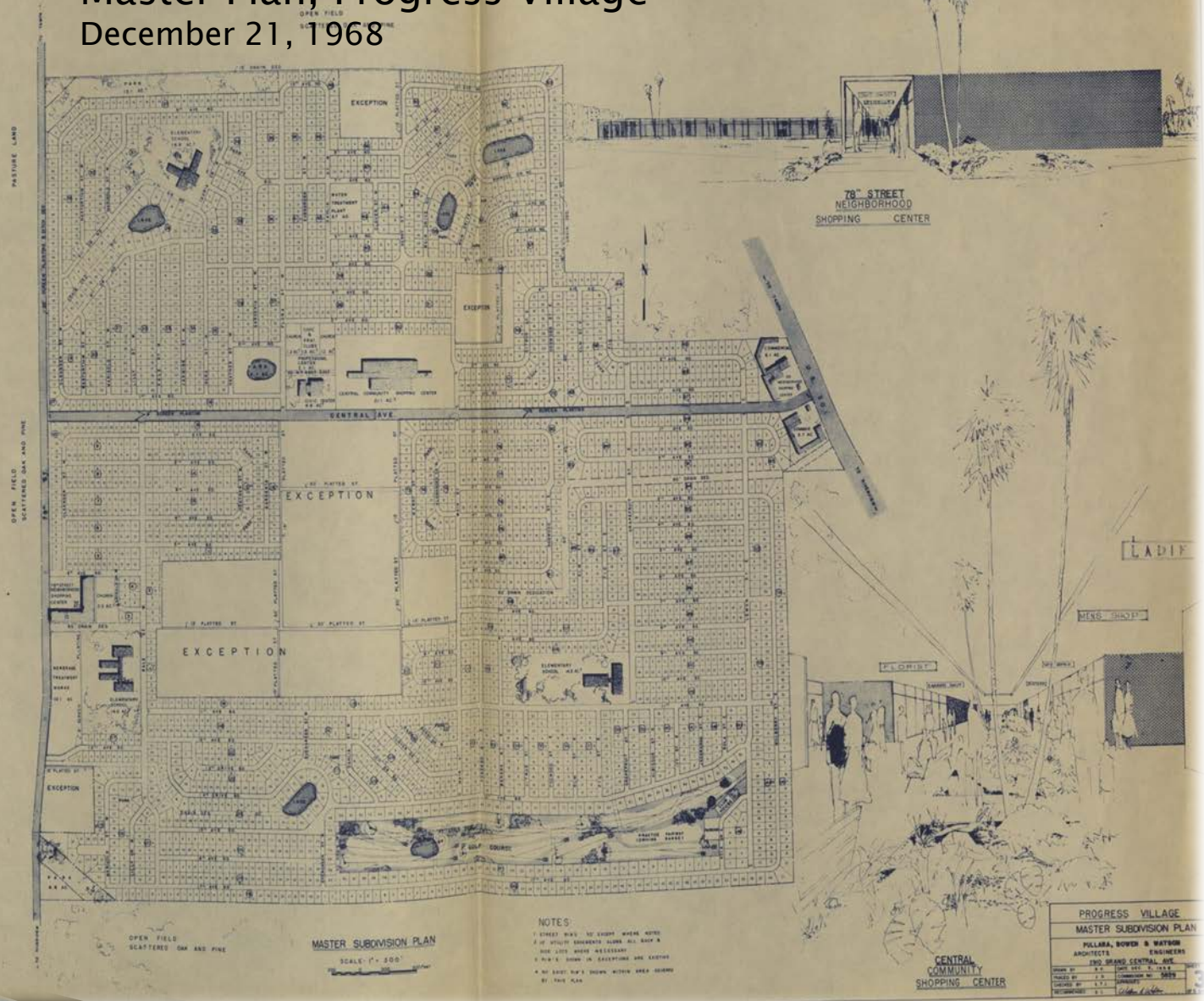


1960 >>

Tallahassee

Master Plan, Progress Village

December 21, 1968





Hillsborough County Historic Landmark: Glover School >>

Bealsville

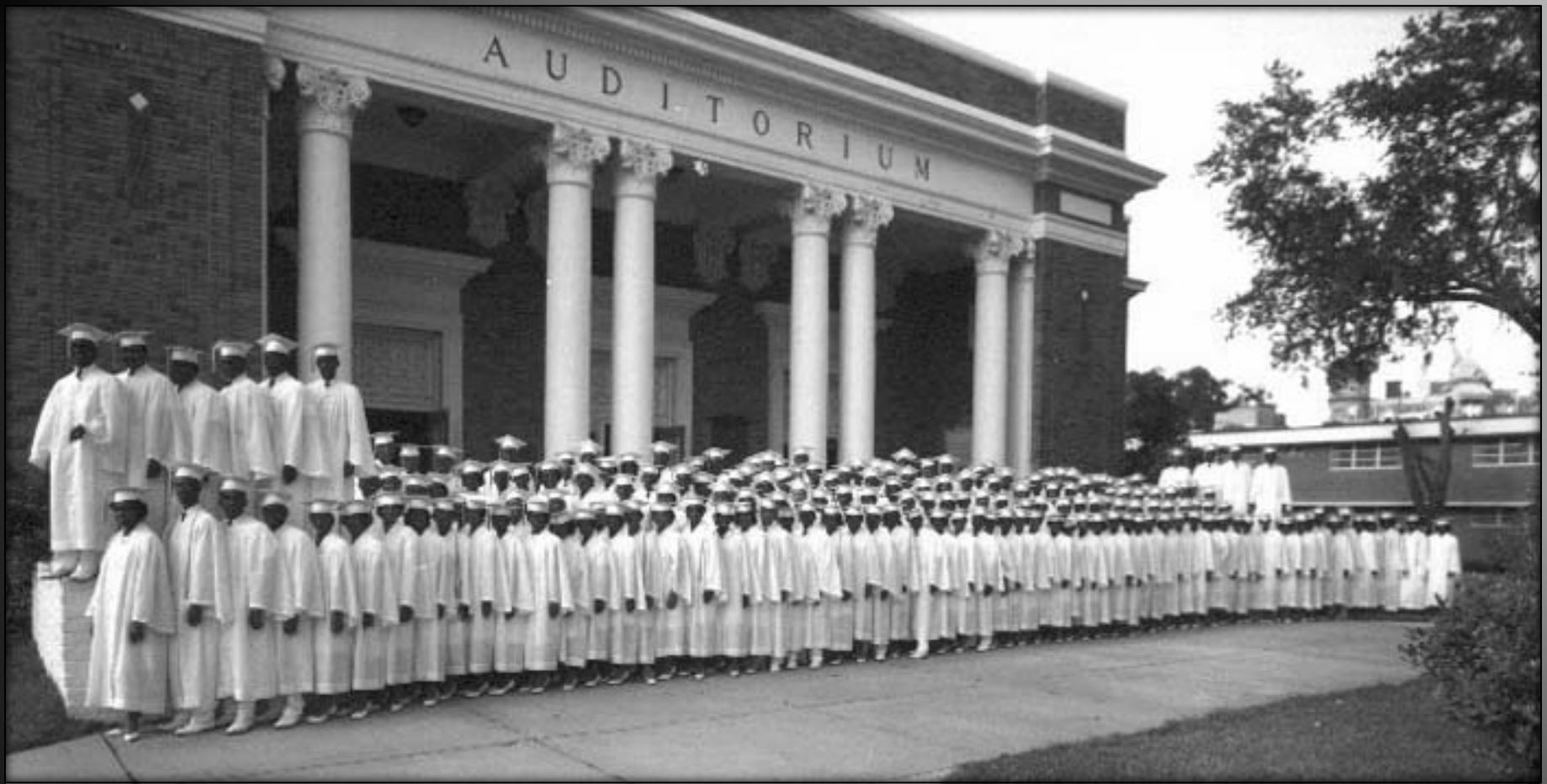


First Baptist Church >>

Lincoln Gardens



Carver City



Middleton High School >>

1963



Dobyville School May Day >>

1963



Central Village >>

1949



Progress Village Center >>

Since 1965



USF – AFA Student Research Group >>

Progress Village Civic Association President, Linda Washington, Dr. Cheryl Rodriguez and some members of the AFA student research group- 2013



Progress Village >>

2014



Progress Village >>

Circa 1950s



Progress Village >>

Circa 1950s