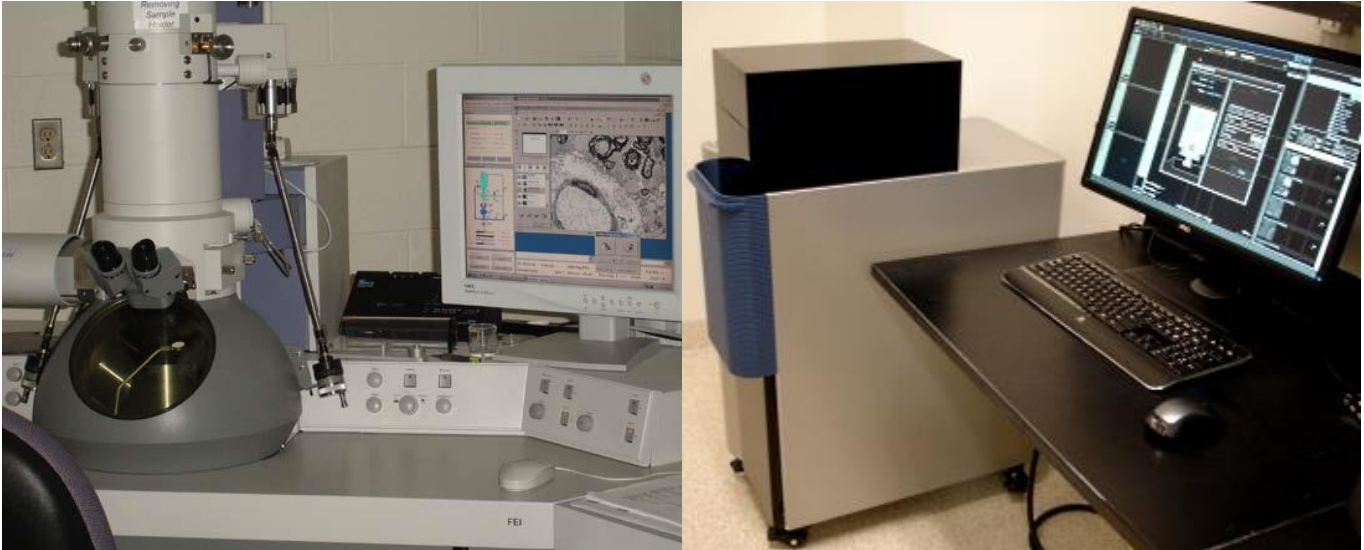


# University of South Florida Department of Integrative Biology



## Electron Microscope Core Facility

### Microscope Services Available to Universities, Industry and Commercial Labs

- Transmission and Scanning Electron Microscopy
- Transmitted and fluorescent light microscopy
- Specimen preparation
- Instrument training in TEM, SEM, Light Microscopy and Consulting

The Microscopy Core labs provide service to all research departments of the University of South Florida, including the USF College of Medicine, and USF College of Public Health, as well as USF St. Petersburg, USF New College, H. Lee Moffitt Hospital, the James A. Haley Veteran's Hospital, the University of Tampa, Florida Institute of Technology (FIT), and industry in the greater Tampa Bay area.

# University of South Florida Department of Integrative Biology Electron Microscope Facility

Hourly Rate (educational) \*

## TEM:

Unassisted use of the TEM \$25.00  
Assisted Microscopy/or Microscopy Training \$40.00\*\*\*  
Simple Sample Preparation - Nanoparticles/Virus/Bacteria/Negative Stain \$40.00  
Sectioning, Thicks/Thins, Staining \$45.00 per Block  
Fixation, Dehydration, Embedding, Sectioning and Staining \$200.00/Sample  
Complex Sample Preparation and Photography \$240.00/Sample  
Sample Preparation Training and Consultation Time \$40.00  
Unassisted use of Microtome or Knifemaker (Includes Glass) \$10.00

## SEM:

Unassisted use of the SEM \$25  
Assisted Microscopy/or Microscopy Training \$40.00\*\*\*  
Sample Preparation-Basic (Mount Dry Sample or Powder, Sputter Coat) \$40.00  
Sample Preparation-Biological (Wet Sample, Tissue) \$160.00/Sample  
Sample Preparation Training and Consultation Time \$40.00  
Sputter Coating \$20.00/Run

\*\*\*Plus Supplies

\*Non-educational Rates are 25% Higher

**Contact: 813-974-2676**

**LAB ADDRESS:  
USF INTERDISCIPLINARY SCIENCE BUILDING  
ROOM 1046**

**MAIL ADDRESS:  
University of South Florida  
Department of Integrative Biology  
SCA 110**

**4202 East Fowler Avenue  
Tampa, FL 33620**