



## About this Graduate Course

MHS 6024 • CRN 85730 • Sec 792

### School Based Mental Health Course

Fall 2023

This course is taught entirely online (asynchronous) via modules made available through Canvas

### Instructor

Matthew E. Foster, PhD

### More Information

[mfoster@usf.edu](mailto:mfoster@usf.edu) • 813-974-0821

### [www.usf.edu/cabh](http://www.usf.edu/cabh)

Director: Debra Mowery

*Register Now  
before the  
course fills up!*

# School-Based Mental Health Services

## Course Description

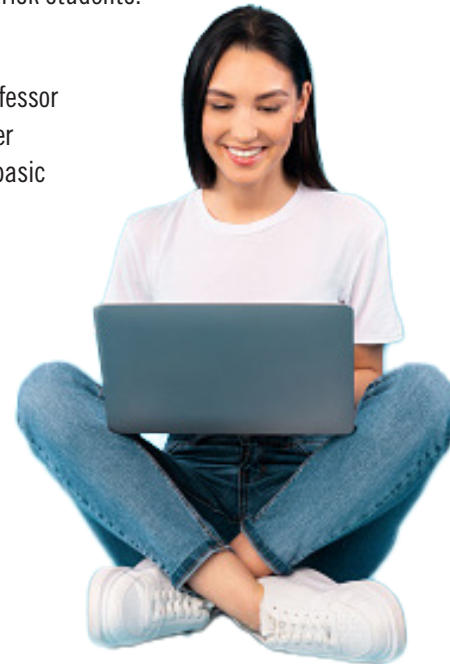
This course aims to equip students with fundamental knowledge and skills related to evidence-based behavioral health prevention and intervention in schools with an emphasis on cross systems collaboration and multi-tiered systems of services and supports.

## Course Highlights

- Review the history, financing, and prominent models of delivery of school-based behavioral health services, and the roles of various key personnel (e.g., administrators, teachers, related services personnel, parents, and community providers) in meeting students' behavioral health needs.
- Understand whole-school approaches to the delivery of behavioral health services that address the needs of all students within the school setting.
- Gain knowledge regarding evidence-based behavioral health prevention and intervention approaches in schools for specific problems and higher risk students.

## About the Instructor

Dr. Foster is a developmental psychologist and Assistant Professor at CFS's Rightpath Research and Innovation Center. Dr. Foster conducts a wide range of school-based research, including basic research and longitudinal applied studies. He is particularly interested in supported children's academic and social emotional development as they transition from preschool through elementary school. He is also interested in evidence-based practices, especially those that foster early academic achievement using multi-tiered systems of support (MTSS). As a previous special education teacher and developmental psychologist, Dr. Foster has a strong understanding of the intersection between developmental disabilities and school-based supports.



Events, activities, programs and facilities of the University of South Florida are available to all without regard to race, color, marital status, gender, sexual orientation, religion, national origin, disability, age, Vietnam or disabled veteran status as provided by law and in accordance with the university's respect for personal dignity. USF is an EO/EA institution.