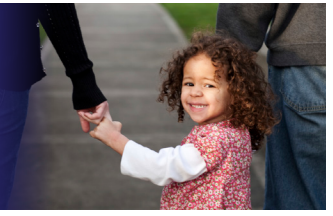


New Class Coming Fall 2018



IDS 2600 Applications of Research in Community Settings

In this course, students will learn the principles of community-based participatory research and receive opportunities to observe and analyze the application of evidence-based practices in community settings. The course includes readings from the professional literature, activities to facilitate understanding of applied research, and hands-on experiences in community settings with culturally and linguistically diverse children.

Course Highlights

- Students from all majors form a collaborative interdisciplinary team that serves and works together.
- Gain hands-on experience with culturally and linguistically diverse preschool and elementary age children.
- Learn to administer educational assessments, deliver interventions, and promote language and math skills via shared book reading activities.
- Projects focus on social, emotional, and academic development.
- Build your vitae for graduate school or prepare for a career in behavioral and community sciences or education.
- Get involved early and continue to work with the instructors on projects through directed research in subsequent semesters.
- Spanish speakers welcome!

About the Instructors

Trina D. Spencer, PhD, BCBA-D
trinaspencer@usf.edu | 813-974-5128

Dr. Spencer is a behavior analyst, school psychologist and Associate Professor at Rightpath. Dr. Spencer's research involves the development and evaluation of innovative academic language assessment and interventions for at risk children. Her interests are centered around multi-tiered systems of supports, evidence-based practice, and interdisciplinary collaboration.

Matthew E. Foster, PhD
mfoster@usf.edu | 813-974-0821

Dr. Foster is a developmental psychologist and Assistant Professor at Rightpath. Dr. Foster develops progress monitoring and kindergarten readiness assessments appropriate for English and Spanish speakers ages 3 to 6 years. He is also interested in areas of early development such as mathematics, language, and cognitive and linguistic abilities.

Our Mission

To improve the lives of vulnerable children by conducting innovative applied research, building strategic partnerships locally, nationally, and globally, and preparing the next generation of researchers.



Events, activities, programs and facilities of the University of South Florida are available to all without regard to race, color, marital status, gender, sexual orientation, religion, national origin, disability, age, Vietnam or disabled veteran status as provided by law and in accordance with the university's respect for personal dignity. USF is an EO/EA institution.



UNIVERSITY OF
SOUTH FLORIDA
COLLEGE OF BEHAVIORAL
& COMMUNITY SCIENCES

www.usf.edu/rightpath

