



AI-POWERED INSIGHTS: ENHANCING PROGRAM EVALUATION

Agenda

- Part 1: General Information
 - AI Apps
 - GPT and the chatbots
 - Quality of the Prompts
- Part 2: Current Uses
 - Including Examples
- Part 3: Open Discussion
 - How have you experimented?
 - What are your concerns?
- Part 4: Resources



1

GENERAL INFORMATION

AI Apps

Chat GPT



Kapwing



Elicit AI



Image Creator



Bard AI



Perplexity AI

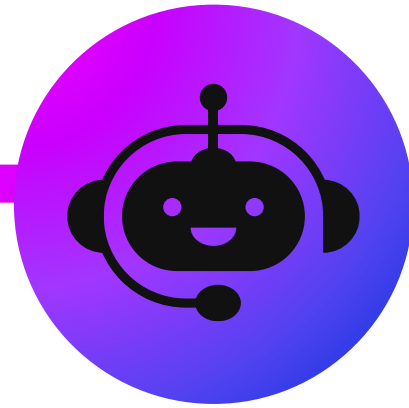


ChatGPT



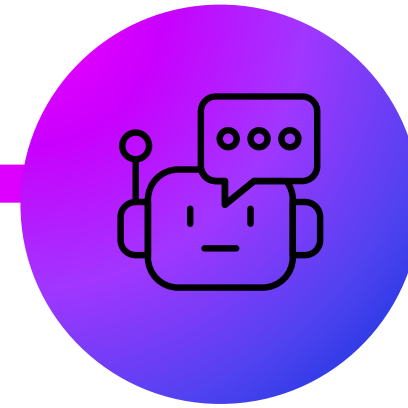
GPT

(Generative Pre-Trained Transformer) is a language model



CHatGPT

“The dialog format makes it possible for ChatGPT to answer follow-up questions, admit its mistakes, and reject inappropriate requests”
(OpenAI Website).



ChatGPT-3.5

Free Version

Contains some limitations.



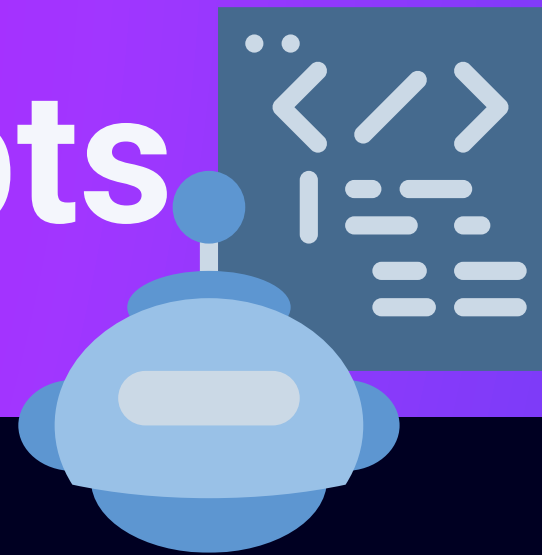
ChatGPT-4

Costs \$20 Monthly

Includes:

- Browser with Bing
- Image creator DALL-E

Prompts



Prompt **CONTEXT** + **SPECIFIC INFORMATION** + **INTENT** + **RESPONSE FORMAT**

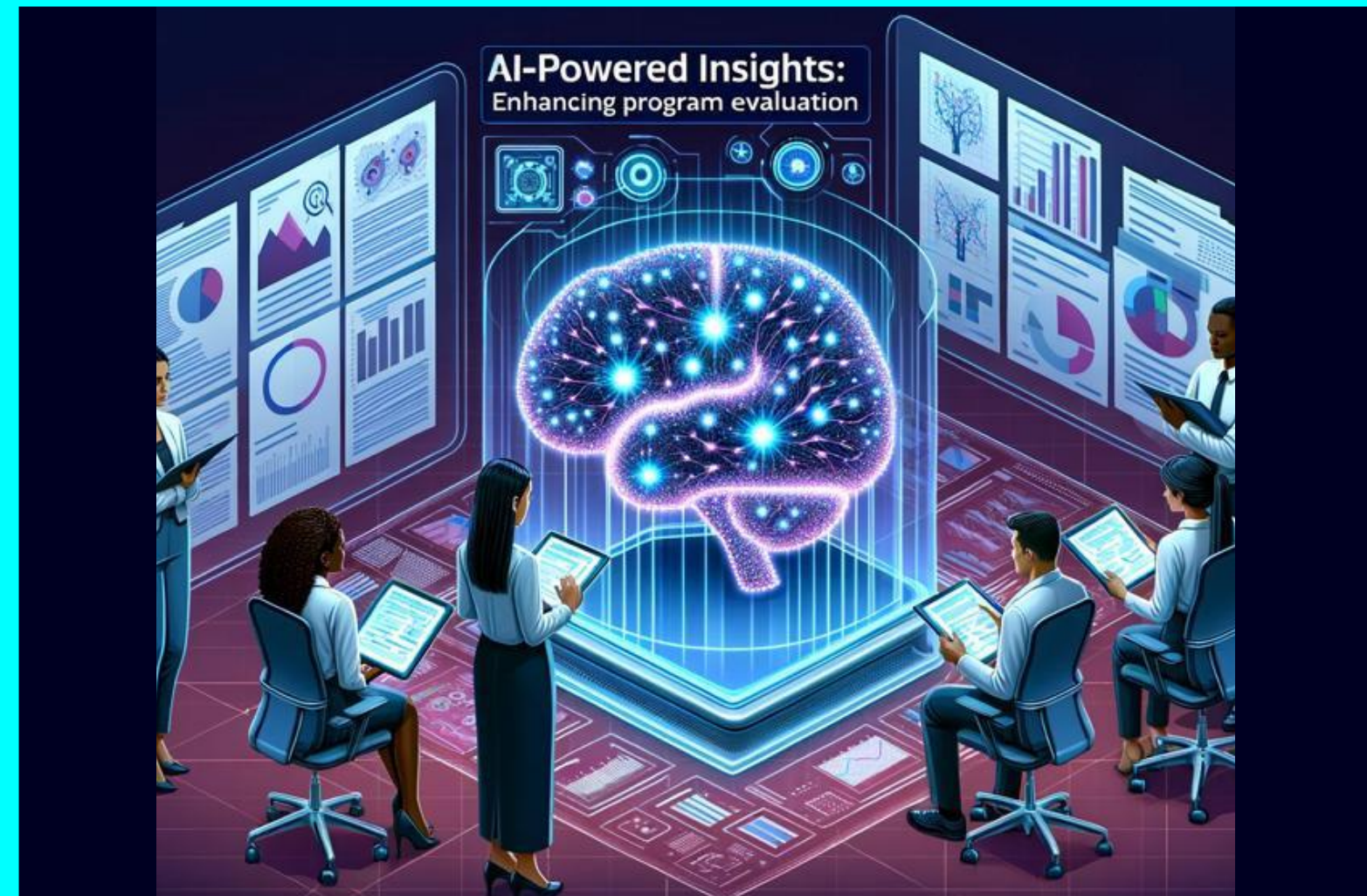
MORE AND BETTER DETAILS WILL PROVIDE A BETTER OUTPUT!

2

CURRENT
USES



 DALL-E 2



AI AND EVALUATION



EDUCATIONAL GROWTH



AI & Evaluation

01

PLANNING EVALUATION RELATED
PROJECTS AND REPORTING

02

PROJECT MANAGEMENT IN
EVALUATION

03

SUPPORT FOR RESEARCH

04

DATA AND STATISTICAL ANALYSIS



PLANNING EVALUATION-RELATED PROJECTS

Scope

- Define the scope and purpose of evaluation based on a specific set of criteria

Logic Models

- Provides the elements of a logic model based on your prompt (input, activities, outputs, goals)

Evaluation Questions

- Provide a list of evaluation questions regarding specific topics

Data Collection

- Create questions for surveys, interviews, or focus groups

Data Elements

- Identify potential data sources

Methodology

- Define the methodology according to specific prompt requests

REPORTING



Summarize ideas

Write up conclusions from given findings

Simplify text and change the level for specific audiences

Language translation

EXAMPLE

PROMPT: "I AM A PROGRAM EVALUATOR AND I NEED TO CONDUCT A NEEDS ASSESSMENT TO COMPLY WITH THE ESSA FEDERAL PROGRAM REQUIREMENTS. PROVIDE A LIST OF DATA ELEMENTS I CAN ASSESS FOR THIS PURPOSE."





CHATGPT

Conducting a district-wide needs assessment to comply with the Every Student Succeeds Act (ESSA) federal programs requirements involves collecting a variety of data elements that encompass academic achievement, school performance, student demographics, and resources. Here is a list of data elements you might consider assessing:

1. Student Achievement Data:

- Standardized test scores
- Progress of English language learners
- Graduation rates
- Dropout rates
- College entrance exam scores
- Advanced Placement (AP) course enrollment and exam scores

2. School Performance Metrics:

- School Accountability Scores
- Attendance rates
- Chronic absenteeism rates
- Suspension and expulsion rates
- Student mobility rates
- Progress toward meeting state determined school quality or student success indicators

3. Curriculum and Instructional Materials:

- Access to and availability of high-quality, standards-aligned instructional materials
- Use of evidence-based curricula
- Integration of technology in instruction

4. Teacher and Staff Data:

- Teacher qualifications and certifications
- Teacher retention and turnover rates
- Professional development opportunities and participation
- Staff diversity

5. Student Demographics and Subgroup Information:

- Racial and ethnic demographics
- Economically disadvantaged students
- Students with disabilities
- Foster care and homeless students
- Military-connected students
- Gender distribution

6. School Climate and Safety:

- Incidents of bullying and harassment
- Student perceptions of safety
- Physical condition of school facilities
- Emergency preparedness and response plans

7. Family and Community Engagement:

- Parent and community involvement in school activities
- Availability of family support services
- Partnerships with community organizations

8. Resource Allocation:

- Per-pupil expenditure
- Equitable distribution of resources among schools
- Availability of counselors, social workers, and school nurses
- Access to advanced coursework and extracurricular activities

9. Technology and Infrastructure:

- Access to high-speed internet and digital devices
- Maintenance of school facilities
- Capacity for online assessments and digital learning

10. Early Childhood Education:

- Access to pre-kindergarten programs
- Quality of early childhood education offerings

11. Postsecondary Readiness:

- Enrollment in career and technical education (CTE) programs
- Dual credit enrollment
- Work-based learning opportunities
- Guidance counseling resources

12. Special Programs and Services:

- Special education program effectiveness
- Gifted and talented education programs
- English language learner programs and services

This comprehensive list provides a robust framework for evaluating the diverse aspects of a school district's needs, in alignment with ESSA requirements. Tailor the assessment to focus on the specific priorities and challenges within your district.



Message



EXAMPLE

PROMPT: "I AM A PROGRAM EVALUATOR PLANNING A DISTRICTWIDE NEEDS ASSESSMENT. I NEED TO PLAN ALL ASPECTS OF THE PROJECT. PLEASE PROVIDE ME WITH A LIST OF PROCEDURES AND THE TIMELINE STARTING FEBRUARY 2024 AND ENDING BEGINNING OF APRIL 2024."



PROJECT MANAGEMENT IN EVALUATION



ChatGPT

Planning a district-wide needs assessment involves several key steps, which include defining the scope, determining the methodology, collecting data, analyzing data, and reporting findings. Here's a basic outline of procedures along with a tentative timeline.

February 2024

Week 1-2:

1. Define the scope and objectives of the needs assessment.
2. Develop a project plan including team roles and responsibilities.
3. Identify stakeholders and determine methods of engagement.

Week 3-4:

1. Finalize the assessment tools (surveys, interview guides, focus group questions).
2. Conduct a pilot test of assessment tools and revise as necessary.
3. Obtain any necessary approvals or permissions.

March 2024

Week 1:

1. Launch data collection efforts (distribute surveys, schedule interviews and focus groups).
2. Begin stakeholder engagement activities.

Week 2-3:

1. Monitor data collection progress and troubleshoot any issues.
2. Begin preliminary data analysis.
3. Continue stakeholder engagement activities.

Week 4:

1. Conclude data collection.
2. Compile and clean the data in preparation for analysis.

April 2024

Week 1:

1. Perform in-depth data analysis.
2. Start drafting the needs assessment report.

Week 2:

1. Finalize the draft report.
2. Review the report with key stakeholders for feedback.

Week 3:

1. Incorporate feedback and finalize the report.
2. Disseminate the final report to all stakeholders.
3. Plan for post-assessment meeting to discuss findings and next steps.

It's important to build in flexibility for unforeseen delays or issues and to keep stakeholders informed throughout the process. Additionally, setting up regular check-ins with the project team to monitor progress against the timeline will be crucial for the assessment's success.

STATISTICAL ANALYSIS



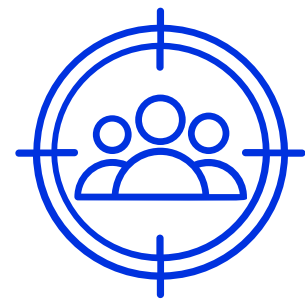
Interpret results

Provide a picture of the SPSS output and ask to write up the results



Coding

You can ask to give you specific R codes.
Can also detect code errors and provide corrective measures.

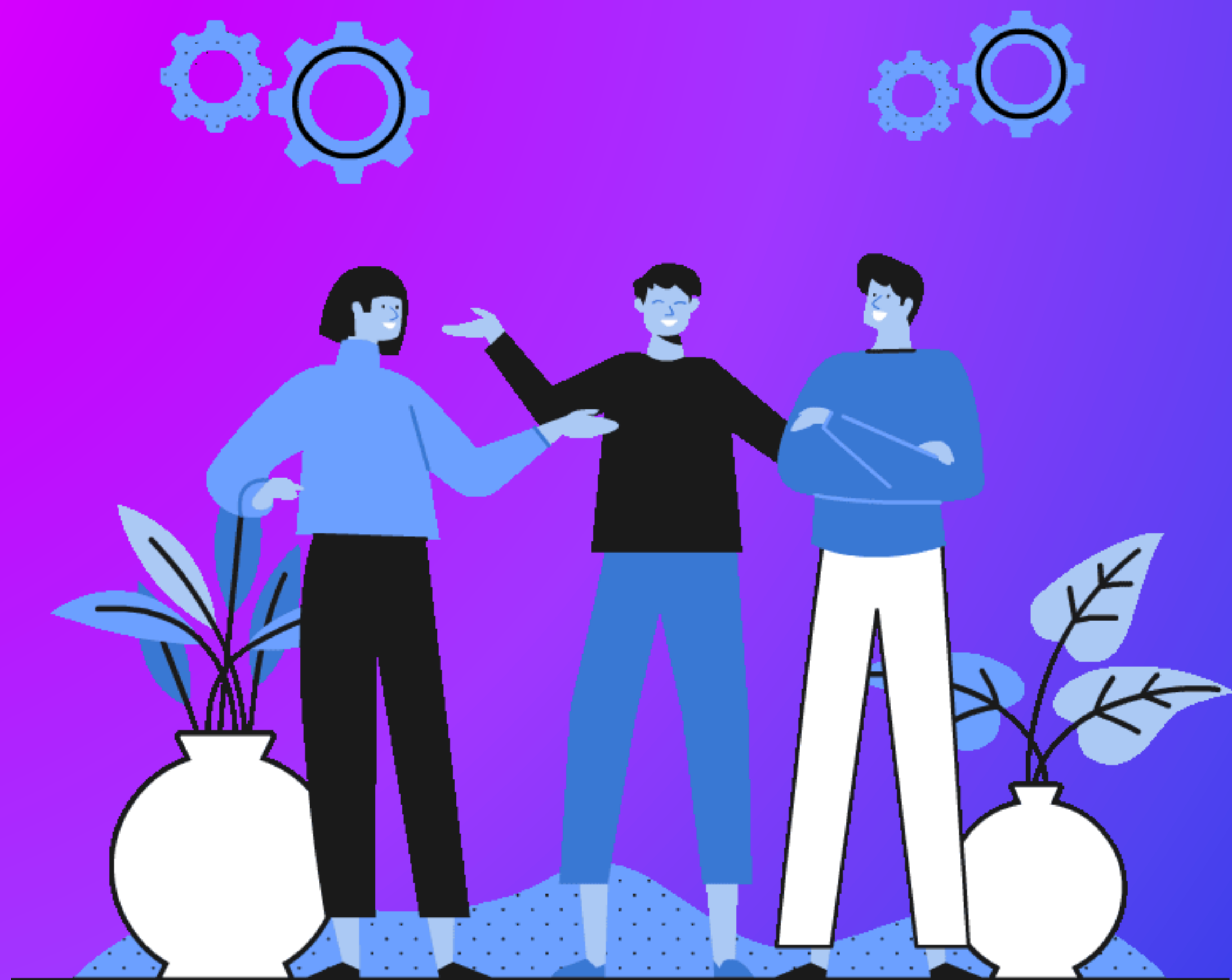


Change the tone based on the audience

Based on the hypothesis testing results, write up the results for non-academic audiences.

3

OPEN DISCUSSION



A large circular graphic with a blue-to-purple gradient. Inside the circle is a stylized circuit board with various components and lines. In the center of the circuit is a square containing the letters 'AI' in a bold, sans-serif font. The circle is surrounded by a dotted line, and there are several small circles of varying sizes around the perimeter.

01

Have you used ChatGPT?
And if not, do you feel
curious enough to try it?

02

What concerns you may
have? We can expand on
ethical issues regarding the
use.

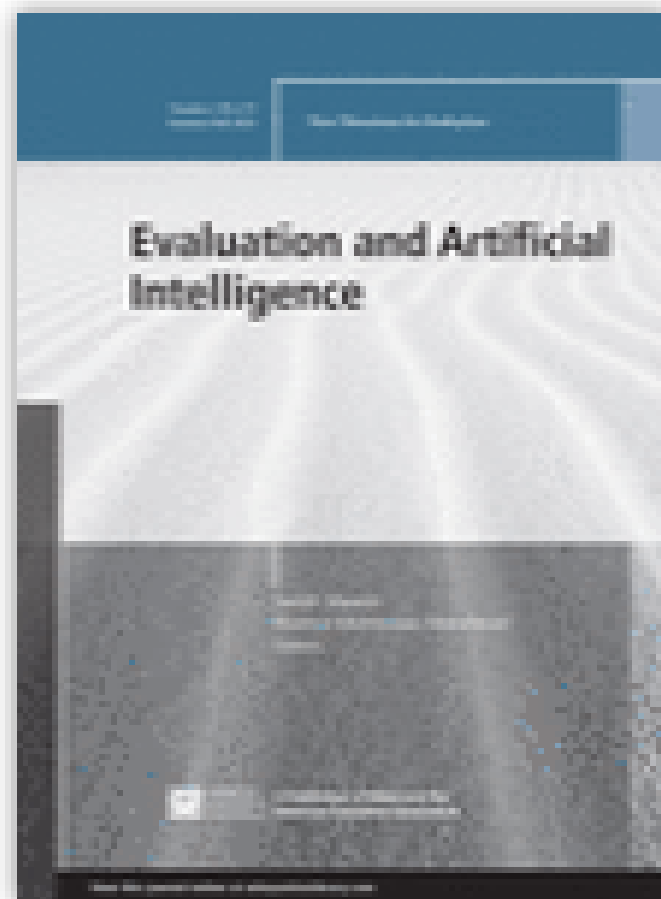
03

What other ways do you think
ChatGPT can be useful for
evaluation?

4

RESOURCES

NEW DIRECTIONS FOR EVALUATION



Volume 2023, Issue 178-179

Special Issue: Evaluation and Artificial Intelligence

Pages: 1-134

Summer-Fall 2023

Issue Edited by: Sarah Mason, Bianca Montrosse-Moorhead



APA Guidance to correctly cite ChatGPT

OpenAI. (2023). *ChatGPT* (Mar 14 version) [Large language model]. <https://chat.openai.com/chat>

- ***Parenthetical citation:*** (OpenAI, 2023)
- ***Narrative citation:*** OpenAI (2023)

[Link: How to cite ChatGPT \(apa.org\)](https://apastyle.apa.org/style-grammar-guidelines/references/examples/chatgpt-references)

Thank you

Contact Me 



KaMi Ojeda Rodríguez

Evaluation and AI Implementation

 km.ojedarodriguez@outlook.com

 <https://www.linkedin.com/in/kamiojeda/>