



# Welcome to Sunny USF!





UNIVERSITY OF  
SOUTH FLORIDA

A PREEMINENT  
RESEARCH UNIVERSITY

# Measurement and Research Orientation 2019-2020

# Agenda

## **Welcome**

**Robert Dedrick, Ph.D., Professor, Program Coordinator**

## **Department of Educational and Psychological Studies**

**Barbara Shircliffe, Ph.D., Professor, Chair**

## **Faculty Introductions**

**Staff Introductions:** Todd Williams

## **Student Introductions**

## **PowerPoint Presentation**

## **Questions & Answers**



Organization of the College

Information about our Program





UNIVERSITY OF  
SOUTH FLORIDA

A PREEMINENT  
RESEARCH UNIVERSITY



Dean  
Rob Knoppel  
EDU 105



Associate Dean for  
Research &  
Innovation and  
Faculty Affairs  
Kathy Bradley Klug  
EDU 105F

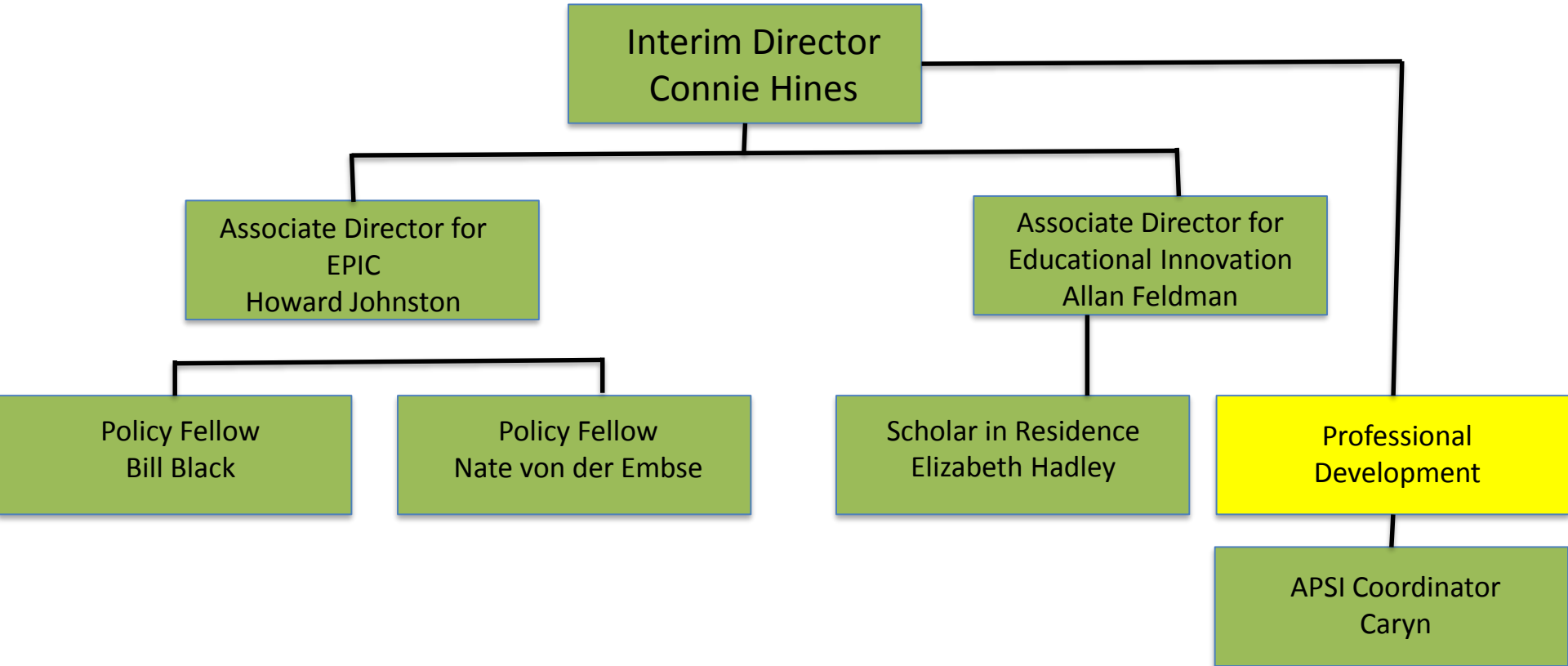


Associate Dean for Academic  
Affairs  
Ann M. Cranston-Gingras  
EDU 105

# David C. Anchin Center



# Anchin Center



# Gus A. Stavros Center



<https://www.usf.edu/education/stavros-center/>



# 4 Departments



**Barbara  
Shircliffe**  
Educational &  
Psychological  
Studies (EPS)  
EDU 380P



**Deanna  
Michael**  
Teaching &  
Learning (#3)



**Elizabeth  
Shaunessy-  
Dedrick**  
Teaching &  
Learning (#4)



**Judith  
Ponticell**  
Leadership,  
Counseling,  
Adult, Career &  
Higher Education  
(LCACHE)

Department of  
Educational & Psychological Studies (EPS)

1. Educational Measurement and Research
2. Educational Psychology
3. Exercise Science
4. Instructional Technology
5. School Psychology
6. Social Foundations

# Department of Educational & Psychological Studies

## Department of Educational & Psychological Studies

Chair: Barbara Shircliffe, 813-974-4001, shirclif@usf.edu

Measurement & Research	Exercise Science	Educational Psychology	Instructional Technology	Social Foundations	School Psychology
APS Todd Williams	APS Heather Van Allen	APS Deana Russell	APS Todd Boyd	APS Deana Russell	APS Todd Williams
Coordinator Robert Dedrick, Professor	Coordinator Bill Campbell, Associate Professor	Coordinator Sarah Kiefer, Associate Professor	Coordinator Yiping Lou, Associate Professor	Coordinator Deirdre Cobb-Roberts, Associate Professor	Coordinator Jose Castillo, Associate Professor
Leia Cain, Instructor	Candi Ashley, Professor	Darlene DeMarie, Associate Professor	Nathan Fisk, Assistant Professor	Alisha Braun, Assistant Professor	George Batsche, Professor
Yi-hsin Chen, Associate Professor	Sam Buckner Assistant Professor	Lisa Lopez, Associate Professor	James Hatten, Instructor	Lauren Braunstein, Instructor	Kathy Bradley-Klug, Professor
Wendy Dickinson Visiting Assistant Professor	Mo Chiodini, Instructor	Tony Tan, Professor	Sanghoon Park, Assistant Professor	Paula Cate, Instructor II	Brittany Hearon Visiting Assistant Professor
John Ferron, Professor	Marcus Kilpatrick, Professor		Glenn Smith, Associate Professor	Barbara Shircliffe, Professor	Lindsey O'Brennan (Post-Doc.)
Eun Sook Kim, Associate Professor	Nic Martinez, Instructor				Natalie Romer Visiting Assistant Professor
Liliana Rodriguez- Campos, Professor					Diana Socie (Post Doc.)
Jennifer Wolgemuth, Associate Professor					Shannon Suldo, Professor
APS=Academic Program Specialists					Nate von der Embse, Assistant Professor

# Academic Program Specialist



Deana-Kaye Russell: Educational  
Psychology, Social Foundations  
Room EDU 380 S  
4-3515  
deanakaye@usf.edu



Todd Williams: Measurement &  
Research, School Psychology  
Room EDU 360  
4-8351  
twillia@usf.edu



## Academic Program Specialist



Heather Van Allen: Exercise Science  
Room PED 214  
4-3443  
hvanallen@usf.edu



Todd Boyd: Instructional Technology  
Room EDU 380 N  
4-8354  
toddboyd@usf.edu

# Staff Contact Information and Responsibilities

## Department of Educational & Psychological Studies

Chair: Barbara Shircliffe, 813-974-4001, [shirclif@usf.edu](mailto:shirclif@usf.edu)

### EPS Departmental Staff Responsibilities

<b>Todd Boyd</b> 813-974-8354 <a href="mailto:toddboyd@usf.edu">toddboyd@usf.edu</a>	<b>Deana Russell</b> 813-974-3515 <a href="mailto:deanakaye@usf.edu">deanakaye@usf.edu</a>	<b>Heather Van Allen (.75)</b> 813-974-3443 <a href="mailto:hvanallen@usf.edu">hvanallen@usf.edu</a>	<b>Todd Williams</b> 813-974-8351 <a href="mailto:twwillia@usf.edu">twwillia@usf.edu</a>
<ul style="list-style-type: none"> <li>• Department Payroll</li> <li>• Department Appointment Letters</li> <li>• Department Tuition Waivers</li> <li>• Department Computer Inventory</li> <li>• Department PERT</li> </ul>	<ul style="list-style-type: none"> <li>• Departmental Logistics Support</li> <li>• EDU 380T and EDU 255 Lab reservations</li> <li>• Department - Manage Work Study Students (schedule and evaluation)</li> <li>• Department Office - Walk-ins (common expectations)</li> <li>• Book Store</li> </ul>	<ul style="list-style-type: none"> <li>• Departmental Logistics Support</li> <li>• Department Office – Walk-in (common expectations)</li> <li>• PED Building</li> </ul>	<ul style="list-style-type: none"> <li>• Department Workload: FAIR/FAR</li> <li>• Scheduling Measurement Conference Room (EDU 356) and Library</li> <li>• Department Space Survey</li> </ul>



UNIVERSITY OF SOUTH FLORIDA

## Educational Measurement and Research

# Faculty



Statistics

John



Evaluation

Lili



Design  
Qualitative  
Methods

Jenni



Statistics

Eunsook





# Faculty



Classroom Assessment  
Design  
Wendy



Measurement  
Yi-hsin



Classroom Assessment  
Qualitative methods  
Mixed methods  
Leia



# Faculty



Statistics  
Psychometrics

Oscar



Measurement  
Design

Bob



Geographic  
information systems  
(GIS)

David



## Faculty

Oscar L. Olvera Astivia	Assistant Professor	<ul style="list-style-type: none"> <li>• Statistical Methods</li> <li>• Quantitative Research Methods</li> <li>• Psychometrics</li> </ul>
Leia Cain	Instructor	<ul style="list-style-type: none"> <li>• Classroom Assessment</li> <li>• Qualitative methods</li> <li>• Mixed Methods</li> </ul>
Yi-hsin Chen	Associate Professor	<ul style="list-style-type: none"> <li>• Item Response Theory</li> <li>• Cognitive-psychometric Models</li> </ul>
Robert Dedrick	Professor	<ul style="list-style-type: none"> <li>• Measurement</li> <li>• Research Design</li> </ul>
Wendy Dickinson	Visiting Assistant Professor	<ul style="list-style-type: none"> <li>• Classroom Assessment</li> <li>• Data Visualization</li> <li>• Research Design</li> </ul>

## Faculty

John Ferron	Professor	<ul style="list-style-type: none"><li>• Statistical Methods</li><li>• Single-case Methods</li></ul>
Eunsook Kim	Associate Professor	<ul style="list-style-type: none"><li>• Statistical Methods</li><li>• Research Design</li></ul>
David Lamb	Instructor	<ul style="list-style-type: none"><li>• Statistical Methods</li><li>• Geographic information systems (GIS)</li></ul>
Liliana Rodriguez-Campos	Professor	<ul style="list-style-type: none"><li>• Collaborative Evaluation</li><li>• Metaevaluation</li></ul>
Jenni Wolgemuth	Associate Professor	<ul style="list-style-type: none"><li>• Research Design</li><li>• Qualitative Research</li></ul>



Contact Information for Coordinators/Directors		
Robert Dedrick	Program Coordinator	dedrick@usf.edu
John Ferron	Doctoral Program Coordinator	Ferron@usf.edu
Robert Dedrick	Master's Program Coordinator	dedrick@usf.edu
Liliana Rodriguez-Campos	Director of the Graduate Certificate in Evaluation	liliana@usf.edu
Jenni Wolgemuth	Director of the Graduate Certificate in Qualitative Research	jrwolgemuth@usf.edu
Leia Cain	Coordinator of Undergraduate Assessment (EDF 4430)	lkcain@usf.edu

## Faculty Affiliates

- **Agosto, Vonzell**- Narrative inquiry, critical approaches to qualitative research
- **Black, William**- Critical policy analysis, policy ethnography
- **Blank, Jolyn**- Case study research, observational methods, analyzing talk
- **Braun, Alisha**- Discourse analysis, policy analysis, interviews
- **Braunstein, Lauren**- Ethnography of communication, critical approaches to qualitative research

# Faculty Affiliates

- **Denton, Michael**- Narrative and arts-based inquiry, participant observation & critical approaches
- **Feldman, Allan**- Action research, self-study, mixed methods
- **Jones, Phyllis**- Participatory/inclusive research, interviewing, analysis of artifacts
- **King, James**- Queer and critical approaches to qualitative research
- **Richards, Janet**- Arts-based research, writing-up qualitative research, poetry, narrative and auto-ethnography
- **Schneider, Jenifer**- Performance and performative approaches to research

# Emeritus Professors



Dr. Bruce Hall



Dr. Lou Carey



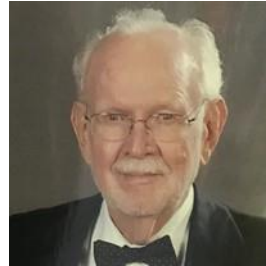
Dr. Bill Katzenmeyer



Dr. Jeff Kromrey and  
Dr. Connie Hines



Dr. Joseph  
Mazur



Dr. Roger  
Wilk



Dr. Doug  
Stone



# Within the Program: Hall, Hines, Kromrey Conference Room



## Within the Program

- Consulting Office for Research in Education (CORE)
  - Zhiyao Yi
  - Ke Cheng
  - Anna Gonzalez
  - John Ferron, Ph.D. (Faculty Advisor)



## CORE: Consulting Office for Research in Education

This consultation service is funded by the College of Education Dean's Office and provided by the doctoral students from Measurement and Research.

- Research design
- Sampling strategies and sample size determination
- Reliability Estimation
- Data screening
- Statistical analysis
- Data presentation
- Thematic analysis
- Data coding
- Instrument design/development
- Psychometrics
- Qualitative
- Mixed Methods

## Hough Family Foundation Measurement and Research Lab



Susan Hough Henry, Ph.D.  
(Measurement & Research)  
with clockwise Dr. Connie  
Hines, Dr. Bruce Hall, Dr.  
Colleen Kennedy (former  
Dean), and Mr. Dick Dearolf  
(former College  
Development Director)

# Within the Program

- Hough Family Foundation Measurement and Research Lab (EDU 248)



Dr. Eunsook Kim: Coordinator

Siyu Liu, John Michels, Thang NguyenAnna Gonzalez

## Our Students

- Diverse in Career Goals
  - Faculty in Higher Education
  - Testing and Evaluation Professionals in P-12 School Districts and Private Sector
  - Psychometricians in government and commercial testing companies
  - Researchers in institutes and centers
  - Consultants in Research and Evaluation





## Focus on Research and Innovation

- Students participate actively in research throughout the program, with explicit goals for presentation of their research via conference presentations and journal articles.
- Faculty mentor-student relationships are central in the professional socialization of the student and complement student peer relationships and collaborative engagements.

We encourage professional development through participation in state, regional, national and international conferences (these are just a few of potential conferences).

Conference	When Proposals are Due	Location + Date
American Evaluation Association (AEA) <a href="https://www.eval.org/">https://www.eval.org/</a>	Proposal deadline was March 18, 2019	Minneapolis, MN Nov. 11-16, 2019
Florida Education Research Association (FERA) <a href="http://feraonline.org/conference/">http://feraonline.org/conference/</a>	<b>September 1, 2019</b>	St. Petersburg, FL Nov. 13-15, 2019
American Education Research Association (AERA) <a href="https://www.aera.net/">https://www.aera.net/</a>	Proposal deadline was July 10, 2019	San Francisco, CA April 17-21, 2020
National Council on Measurement in Education (NCME) <a href="http://www.ncme.org/home">http://www.ncme.org/home</a>	Proposal deadline was Aug. 9, 2019	San Francisco, CA April 16-20, 2020

External Internships: Something to consider down the road  
(especially in the summer)

- **NCME** maintains a lists of internships (see <http://www.ncme.org/resources/careers>)
- **AEA** and others <https://www.eval.org/GEDI>
- **ACT** also has a summer internship program (see <http://www.act.org/content/act/en/working-at-act.html>).

# ACT Summer Internship Program

- Research Intern in the Validity and Efficacy Research Department
- 22 interns from different states and university degrees. Each intern has office, laptop and two monitors, and is able to use all ACT resource as any employers (Gym, library, free coffee and water, supplies, mail service, unlimited color print, use their cafeteria, blog, etc.).The internship program includes engaging in one or two projects with the intern supervisor, exposing to other ACT projects such as ACT Next, and weekly meeting with one or two of ACT department director; volunteering for 4-5 hours, assigning ACT mentor for each intern, meeting with the ACT CEO, research presentation rehearsal and conference presentation (proceed to publish product); and ceremony for recognition. We also got a chance to meet with all interns and sponsors in the area with a great 4 hours gathering. Activities are varied depending on each intern responsibilities but a variety of training and research presentation are open to public.
- **Here are some of interns' universities:**
- University of South Florida, Tampa, FL, University of Iowa, Iowa City, IA, University of Illinois at Champaign–Urbana, IL. University of California, Santa Barbara, CA, Iowa State University, IA, University of South Carolina, Columbia, SC, University of Colorado at Boulder, CO, Indiana University, Washington University, St. Louis, Missouri, Coe College, IA, University of Nebraska–Lincoln.
- **Internship Program benefits:** 9 weeks (from June 10th to August 10th from 8:30 AM to 5 PM) paid\* summer internship (\$20 per hour with 37.5 hours for a week ), in addition to relocation airfare and airport meals, housing, and ACT daily commute for an intern who resides 50 miles or more from Iowa City



Dr. Abeer Alamri

## Focus on Teaching

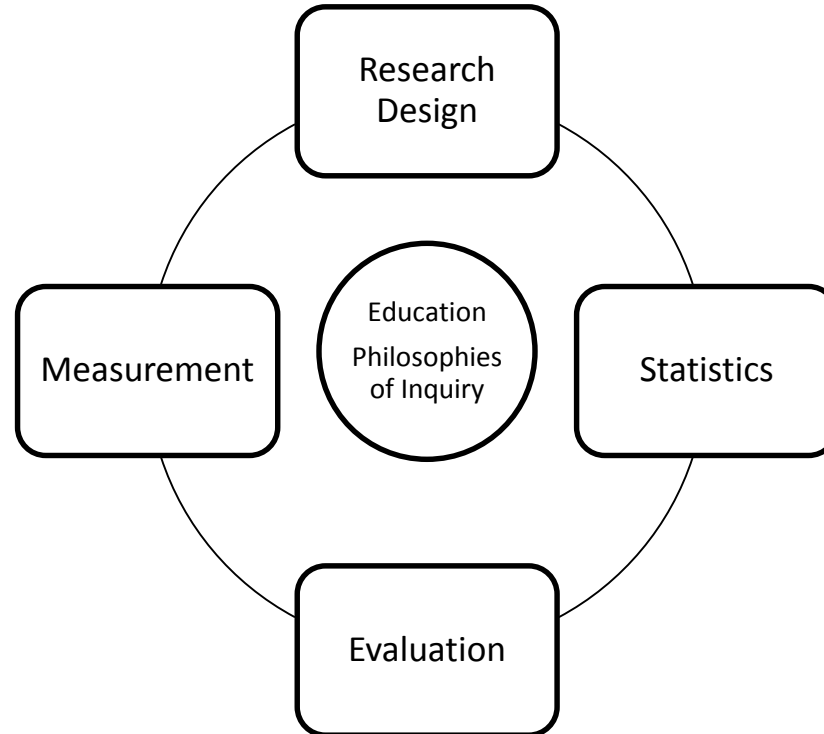
- All doctoral students are encouraged to acquire skills in teaching at the university level
  - In-class
  - Online
- Doctoral students are encouraged to complete a semester-long teaching internship under the supervision of a professor and experienced graduate teaching assistant, and teach independently under the supervision of the faculty member who supports them through the process of teaching at the **undergraduate level (EDF 4430: Measurement for Teachers)**.
- **EDF 4490 Studies in Research Design (undergraduate)**



## Focus on Student Success

- **Emphasis on Mentoring**
- **Support for Graduate Students.** CORE and the Program employ many graduate students and provide them with hands-on opportunities to learn and the financial support that makes full-time study possible.

# The Program



# Overview ( $\geq 70$ )

- EEX 7743 Philosophies of Inquiry (3)
- Education Area ( $\geq 9$ ): next slide
- Statistics, Measurement, Evaluation, and Research “Core” ( $\geq 28$ )
- Statistics or Measurement or Evaluation or Research Specialization ( $\geq 12$ )
- Qualifying Exam
- Doctoral Dissertation (18)

Reading Ed	EDF 7145	Cognitive Issues in Instruction
	RED 6544	Cognition, Comprehension, and Content Area Reading
	RED7910	Directed Research: Reading
Ed Policy	EDG 7931	Urban Schools: Poverty & Policy
	EDF 6883	Issues in Multicultural Education
	EDF 7046	Trends and Issues in Ed Policy
Ed Psych	EDF 7138	Adolescent Development
	EDF 7359	Resilience & Human Development
	EDF 7947	Research Practicum
Leadership	ECW 6695	School Community Relations
	EDA 6271	Data-based Decision Strategies
	EME 6208	Interactive Media
Math Ed	MAE 6338	Topics in Teaching Geometry
	MAE 6137	Topics in Teaching Stats and Probability
	MAE 7138	Assessment in Math Education
Science Ed	SCE 7636	Advanced Topics in Science Education
	SCE 7910	Directed Research in Science Education
	SCE 6366	Science Education
Childhood Education And Literacy	EDF 7359	Resilience in Human Development
	EDG 7910	Directed Research: Educational Psychology
	RED 6545	Vocabulary and Word Study

Examples of Education Area

## Statistics, Measurement, Evaluation, and Research

- Statistics, Measurement, Evaluation, and Research “Core” ( $\geq 28$ )
  - All students would take the courses listed on the next slide
- Statistics or Measurement or Evaluation or Research Specialization ( $\geq 12$ )
  - Students would pick one area of specialization

## Educational Statistics, Measurement, Evaluation, and Research (“Core”)

### Statistics (8)

- EDF 7408\* Statistical Analysis II (4)
- EDF 7484 Statistical Analysis III (4)

### Measurement (7)

- EDF 7437 Adv. Measurement I (3)
- EDF 7438 Adv. Measurement II (4)

### Evaluation (6)

- EDF 7485 Theory and Practice of Educational Evaluation (3)
- EDF 7940 Supervised Practicum in Applied Evaluation (3)

### Research (7\*\*)

- EDF 7410\* Design of Systematic Studies in Education (3\*\*)
- EDF 7477\* Qualitative Research in Education I (4)

\* face-to-face and online

## Specialization

- Students would specialize in one area:
  - Statistics
  - Measurement
  - Evaluation
  - Research Methods
- At least one course is recommended to be taken outside the Department as one mechanism for broadening students' perspectives



## Specialization: Statistics (12)

- EDF 7486    Application of Structural Equation Modeling in Education (3)
- EDF 7474    Applied Multilevel Modeling in Education (3)
- EDF 7498    Analysis of Single Case Data (3)
- **PHC 7059    Advanced Survival Analysis (3)**
- **These courses are examples of possible courses. The final selection of courses is made by the student in collaboration with the major professor and committee.**

## Specialization: Measurement (12)

- EDF 7439 Foundations of Item Response Theory (3)
- EDF 7469 Introduction to Computer-Based Testing (3)
- EDF 7436 Rasch Measurement Models (3)
- **SOP 6669 Factor Analysis (3)**
- **These courses are examples of possible courses. The final selection of courses is made by the student in collaboration with the major professor and committee.**

## Specialization: Evaluation (14)

- EDF 7491 Consulting and Project Management Skills for Evaluators (3)
- EDF 7462 Metaevaluation (4)
- EDF 7493 Systems Approaches for Program Planning, Evaluation, and Dev. (4)
- **PHC 6545 Evaluation in Mental Health (3)**
- **These courses are examples of possible courses. The final selection of courses is made by the student in collaboration with the major professor and committee.**

## Specialization: Research Methods (13)

- EDF 7478 Qualitative Research in Education II (4)
- EDG 7368 Visual Research Methods in Education (3)
- EDG 7931 Introduction to Geographic information Systems (GIS) Research Methods (3)
- **PHC 6706 Focus Group Research Strategies (3)**
- **These courses are examples of possible courses. The final selection of courses is made by the student in collaboration with the major professor and committee.**

## Summary ( $\geq 70$ )

- EEX 7743 Philosophies of Inquiry (3)
- Education Area ( $\geq 9$ )
- Statistics, Measurement, Evaluation, and Research “Core” ( $\geq 28$ )
- Statistics **or** Measurement **or** Evaluation **or** Research Specialization ( $\geq 12$ )
- Qualifying Exam
- Doctoral Dissertation (18)

Stat.	Course No.	Course Title	Fall	Spring	Summer
	EDF 6407	Stat I	Tues, Thurs, Online	Online	Online
	EDF 7408	Stat II	Tues	Tues, Thurs	Online
	EDF 7484	Stat III	Mon		Tues/Thurs
	EDF 7474	Applied Multilevel Modeling		Mon (2020)	
	EDF 7486	Structural Equation Modeling	Wed (2019)		
	EDF 7498	Analysis for Single Case Experiments		Tues	
Measure- ment	EDF 7437	Adv Measurement I	Wed		
	EDF 7438	Adv Measurement II		Wed	
	EDF 7439	Item Response Theory		Thurs (2020, Even Years)	
	EDF 7469	Computer Based Testing		Thurs (2019, Odd Years)	
Research Design	EDF 7410	Design Sys Studies in Ed	Tues	Thurs	Online
	EDF 7477	Qual Research In Ed I	Thurs	Tues, Wed	Online
	EDF 7478	Qual Research in Ed II	Mon., Thurs	Thurs	Tues/Thurs Online
Eval.	EDF 7485	Theory of Program Evaluation	Sat		
	EDF 7940	Pract in Applied Evaluation		Sat	
	EDF 7462	Metaevaluation			Days Vary
	EDF 7497	Personnel Evaluation	(Fri., 2018, Even Years)		
	EDF 7491	Project Management		(Fri., 2019, Odd Years)	
MA/U	EDF 6481	Found Ed Research	Wed, Online	Mon, Online	Online
	EDF 6432	Found of Measurement	Wed, Online	Wed, Online	Online
	EDF 4430	Measurement for Teachers	Mon/Wed, Tues/Thurs Online	Mon/Wed, Online	Online
	EDF 4490	Studies in Research Design		Mon/Wed	
*Course schedule expected to remain in place for subsequent semesters.					

Mon/Wed = Class meets twice a week; Tues/Thurs = Class meets twice a week



# Graduate Certificate in Evaluation



## Graduate Certificate in Evaluation

The Graduate Certificate in Evaluation provides an opportunity for graduate students and other professionals to gain a working understanding of contemporary evaluation theory and practice; tools and techniques used in evaluation; standards of quality for professional evaluation practice; evaluation ethics; appropriate evaluation uses; and impact of evaluation on decision making. The certificate is designed to prepare professionals for staff positions in evaluation, in schools or non-school organizations. Participants will be immersed in diverse real-world learning experiences from the beginning of the certificate that meet their specific interest and needs.

# Graduate Certificate in Evaluation

## Requirements

13 credit hours (minimum)

EDG 6931 - Foundations of Applied Evaluation (3)

EDF 6941 - Practicum in Measurement, Evaluation and Research (3)

EDF 7462 - Metaevaluation (4)

### **Electives** (Select one course)

EDF 7477 - Qualitative Research in Education (4)

EDF 6481 - Foundations of Educational Research (3)

EDF 6407 - Statistic Analysis for Educational Research I (4)

EDF 6432 - Foundations of Measurement (3)

### **Credit toward Graduate Degree**

Up to 12 hours of certificate course credits may be applied to a graduate degree with departmental approval.



# Graduate Certificate in Qualitative Research

# Graduate Certificate in Qualitative Research

- 13-hour certificate provides an opportunity for graduate students and other professionals to gain a broad and in depth knowledge of qualitative research, with an emphasis on the designs and methods used in studies of educational programs, processes, initiatives, settings, and policies.
- Required Course
  - EDF 7478: Qualitative Research in Education Part II (4 credit hours)
- Elective Courses
  - Nine (9) credit hours of elective coursework in qualitative research. Students may choose a course from the following list, or substitute an elective course approved by the Graduate Certificate director.
    - EDF 7426: Action Research in Schools (3 credit hours)
    - EDG 7368: Visual Research Methods (3 credit hours)
    - Any graduate course in qualitative research (3 credit hours)

# Graduate Certificate in Qualitative Research

- For more information and to apply  
<http://www.usf.edu/innovative-education/graduate-certificates/programs/qualitative-research.aspx>
- For questions contact Graduate Certificate Director  
Dr. Jennifer R. Wolgemuth at [jrwolgemuth@usf.edu](mailto:jrwolgemuth@usf.edu)
- FAQs  
Can Directed Research, Independent Study, or Dissertation credits count toward the certificate?
  - No

When can I apply?

- <https://www.usf.edu/innovative-education/graduate-certificates/how-to-apply/index.aspx>
- Can EDF 7477: Qualitative Research in Education Part I count toward the certificate?
- Yes

# Where to find more...

- <https://www.usf.edu/education/areas-of-study/educational-measurement/index.aspx>



The screenshot shows the homepage of the Educational Measurement and Research program. The header is green with the program name and 'COLLEGE OF EDUCATION'. Below the header is a navigation bar with links: ABOUT, PROGRAMS, FACULTY, RESEARCH, STUDENTS, and CONTACT. The main content area features a large photo of a professor pointing at a whiteboard with mathematical formulas. Below the photo is a welcome message. At the bottom, there are three sections: 'EXPLORE DEGREE PROGRAMS', 'GRADUATE CERTIFICATE', and 'UPCOMING EVENTS'.

**Educational Measurement and Research**  
COLLEGE OF EDUCATION

ABOUT PROGRAMS FACULTY RESEARCH STUDENTS CONTACT

**Welcome to the Educational Measurement and Research program!**  
The Educational Measurement and Research program has a strong tradition of inquiry and scholarship, quality teaching and mentoring, commitment to diversity, and service to colleagues within the College, University, P-12 schools and professional associations.

EXPLORE DEGREE PROGRAMS GRADUATE CERTIFICATE UPCOMING EVENTS

**EXPLORE OUR DEGREE PROGRAMS**

**Graduate Certificate**

**AUG 20** First day of Fall 2018  
All Day

**AUG 22** Week of Welcome Event  
3:30 PM - 4:30 PM



UNIVERSITY OF  
SOUTH FLORIDA

Go Bulls!

A PREEMINENT RESEARCH UNIVERSITY