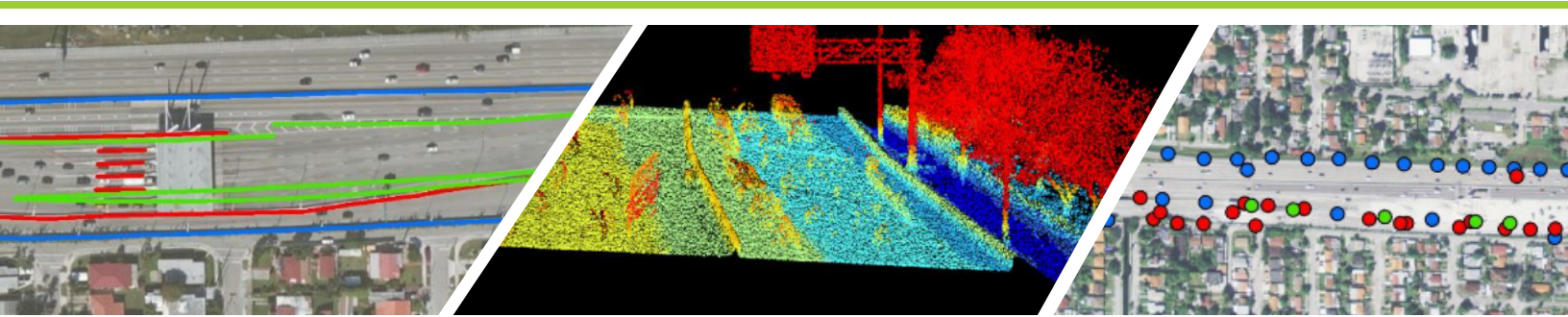


ADJUNCT PROFESSOR NEEDED!

Department of Civil and Environmental Engineering
University of South Florida, Tampa

We are seeking a co-instructor for Spring Semester 2019 (January 7 – May 3, 2019) to co-teach our Geotechnical/Transportation Capstone Design course (CEG 4850), that meets on Thursdays from 6:30 – 9:15 PM.

Course description: Offers a focused team-based design experience incorporating appropriate engineering standards and multiple realistic constraints, including geometric design and alignment of highways and surface streets, design of open highway intersections, quantity summarization, design of flexible, rigid pavements and/or overlays, design of embankments, drilled shaft foundations, or MSE walls.



► Desired Attributes:

- Florida PE
- Hands on experience with preparation of PD&E in Florida
- Hands on experience with geometric design of highways and streets
- Familiar with design software such as MicroStation, HCS, GeoPak, Synchro, and TSIS CORSIM
- Potential to identify a real-world project as the case study for the course
- Experience/interest in teaching
- Excellent communication skills

► Responsibilities:

- In collaboration with the other co-instructor, developing a course design project topic and compiling design input data;
- Teaching classes, giving and grading assignments on PD&E, geometric design, traffic signal timing, and other transportation-related topics excluding pavement and geotechnical aspects;
- In collaboration with the other co-instructor, mentoring students in their project designs and presentations;
- In collaboration with the other co-instructor, evaluating student performance based on course deliverables and rubrics;
- Connecting students with transportation organizations and professionals for intern and/or employment opportunities.

This is a paid position. The assignment is renewable for spring 2020 and beyond.

For more information please contact:



Dr. Qing Lu: 813-974-5822 • qlu@usf.edu
and/or Dr. Robert Bertini: 813-974-9797 • rbertini@usf.edu