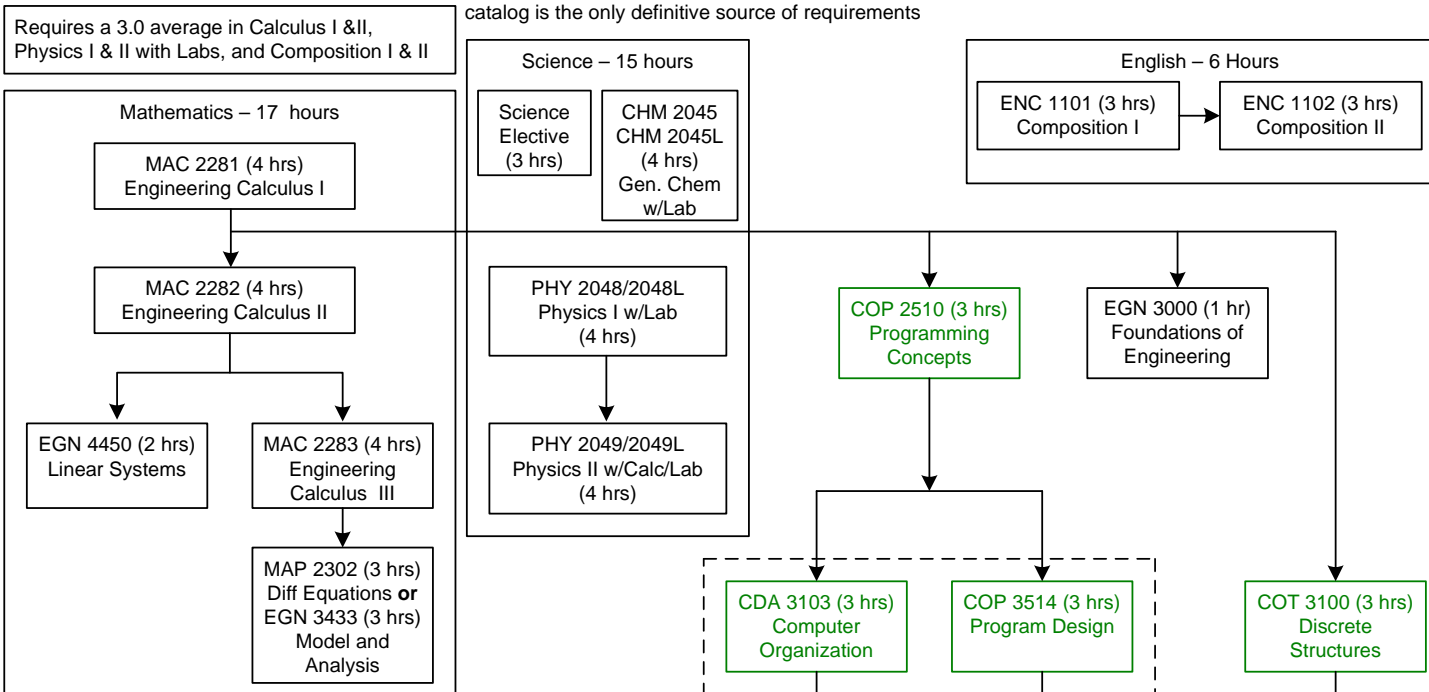


# Computer Engineering Program Catalog 2008/2009 – 128 Hours

**NOTE:** This flow chart is only provided as a guide; the catalog is the only definitive source of requirements



**Engineering fundamentals and core courses**

- EGN 3615 – Engineering Economy
- EGN 3443 – Engineering Statistics (Calc II pre-req)
- EGN 3373 – Electrical Systems (MAP 2302 pre-req)
- EEL 3394 – Electronic Materials

**General Education requirements**

- Social Sciences – 6 hrs
- Historical Perspectives – 6 hrs
- Fine Arts – 3 hrs
- ALAMEA – 3 hrs
- Foreign Language – 8 hrs (or 2 years HS)

**Possible hardware electives (3 credit hours each)**

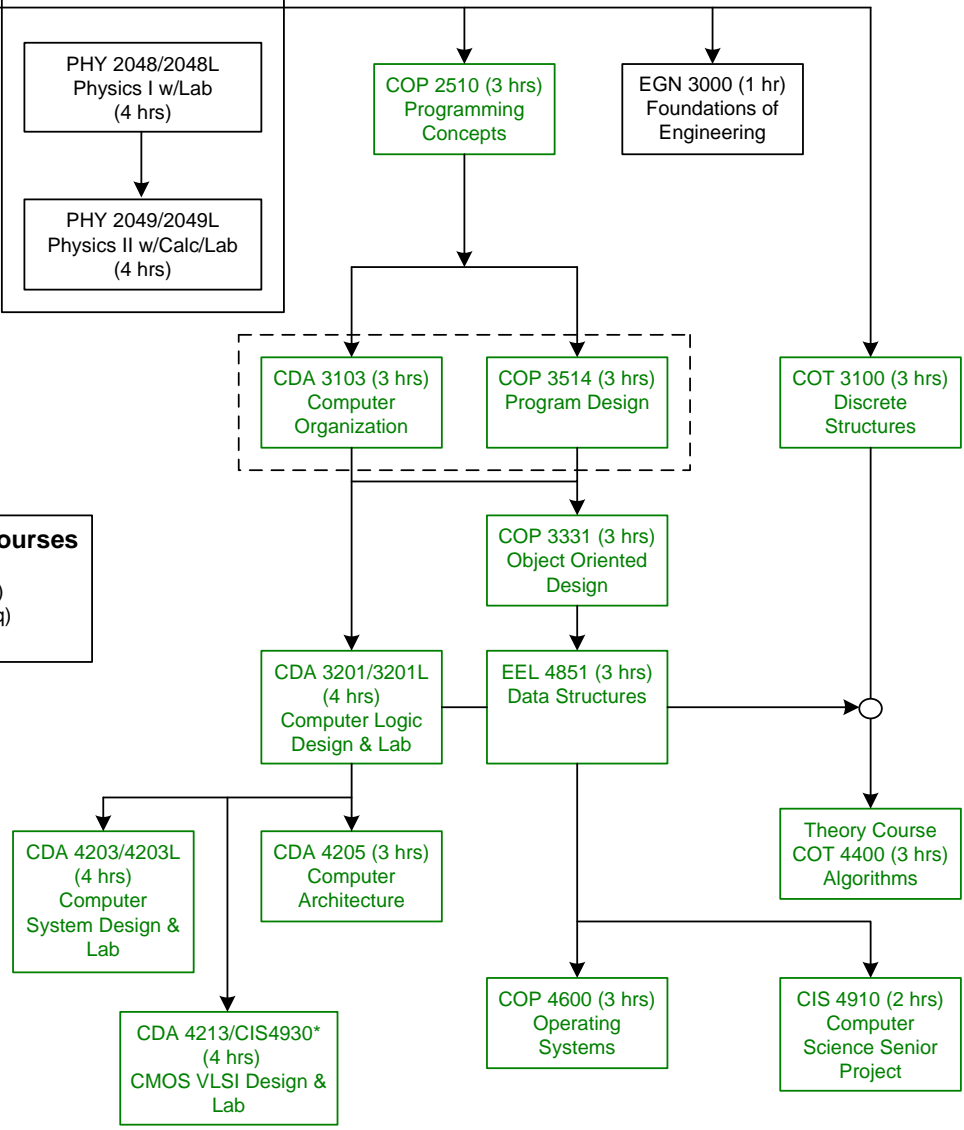
- CDA 4253 – FPGA Design
- CIS 4930 – VLSI Testing
- CIS 4930 – Digital Circuit Synthesis
- CIS 4930 – Design Automation
- CIS 4930 – Embedded Systems
- See undergraduate advisor for all possible elective offerings.

**Exit Requirements**

- CIS 4250 Computer Ethics (3 hrs) – Senior Standing in Dept.
- ENC 3246 Communications for Engineers (3 hrs)

**Note**

Data Structures is prerequisite for all software electives. Logic Design is prerequisite for all hardware courses. Discrete Structures and Data Structures are prerequisite for all theory courses. See catalog for specific prerequisites for elective courses.



**Hardware Electives (6 hrs) (choose 2 from above list)**

\_\_\_\_\_

\_\_\_\_\_

**Departmental Electives Hardware, Software, Theory (6 hrs)**

\_\_\_\_\_

\_\_\_\_\_

\* Please see your academic advisor for required special topics course to accompany CDA 4213 (the student will be registered into CDA 4213L as listed in the catalog course descriptions)