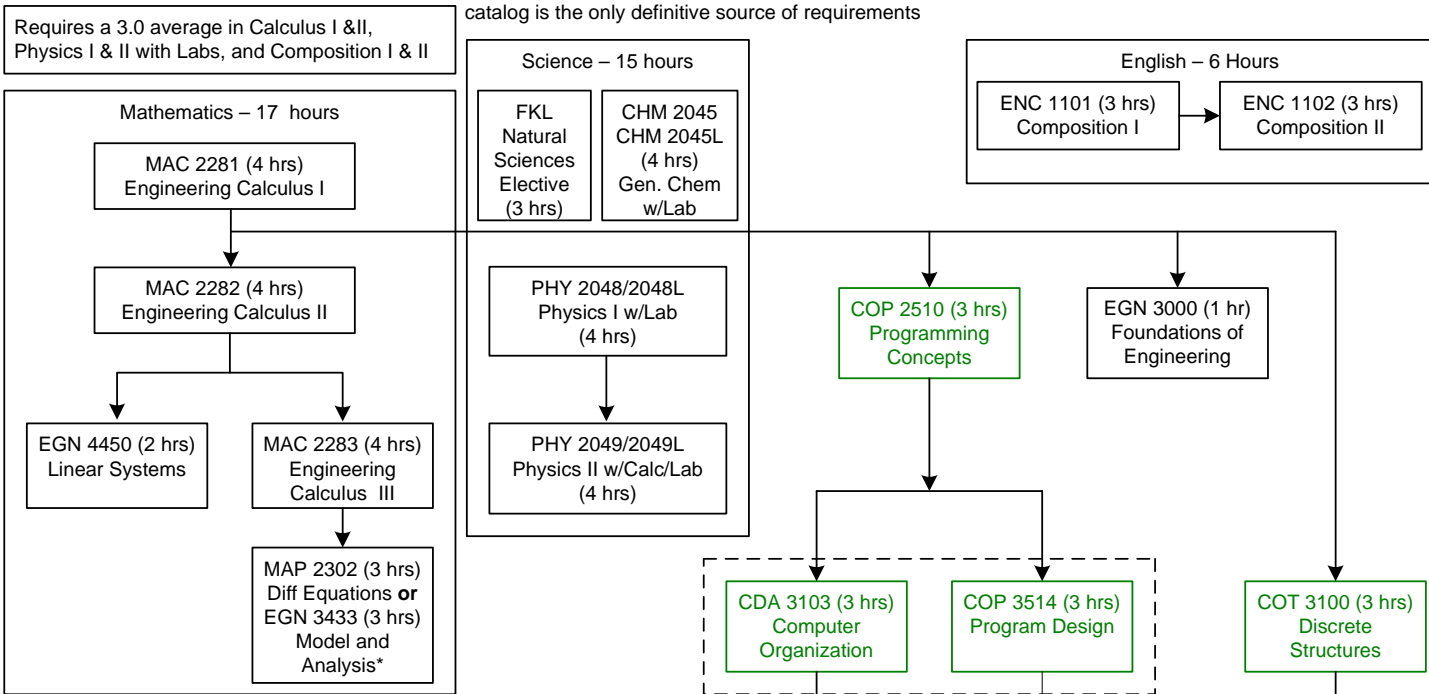


# Computer Engineering Program Catalog 2010/2011 – 128 Hours

**NOTE:** This flow chart is only provided as a guide; the catalog is the only definitive source of requirements



**Engineering fundamentals and core courses**

- EGN 3615 – Engineering Economy
- EGN 3443 – Engineering Statistics (Calc II pre-req)
- EGN 3373 – Electrical Systems (MAP 2302 co-req)
- EEE 3394 – Electronic Materials (Physics II pre-req)

**General Education requirements**

- FKL Social and Behavioral Sciences – 3 hrs
- FKL Humanities – 6 hrs
- FKL Fine Arts – 3 hrs
- Human Cultural Diversity and GC – 3 hrs
- Foreign Lang – 8 hrs (or 2 years high school)

**Possible hardware electives (3 credit hours each)**

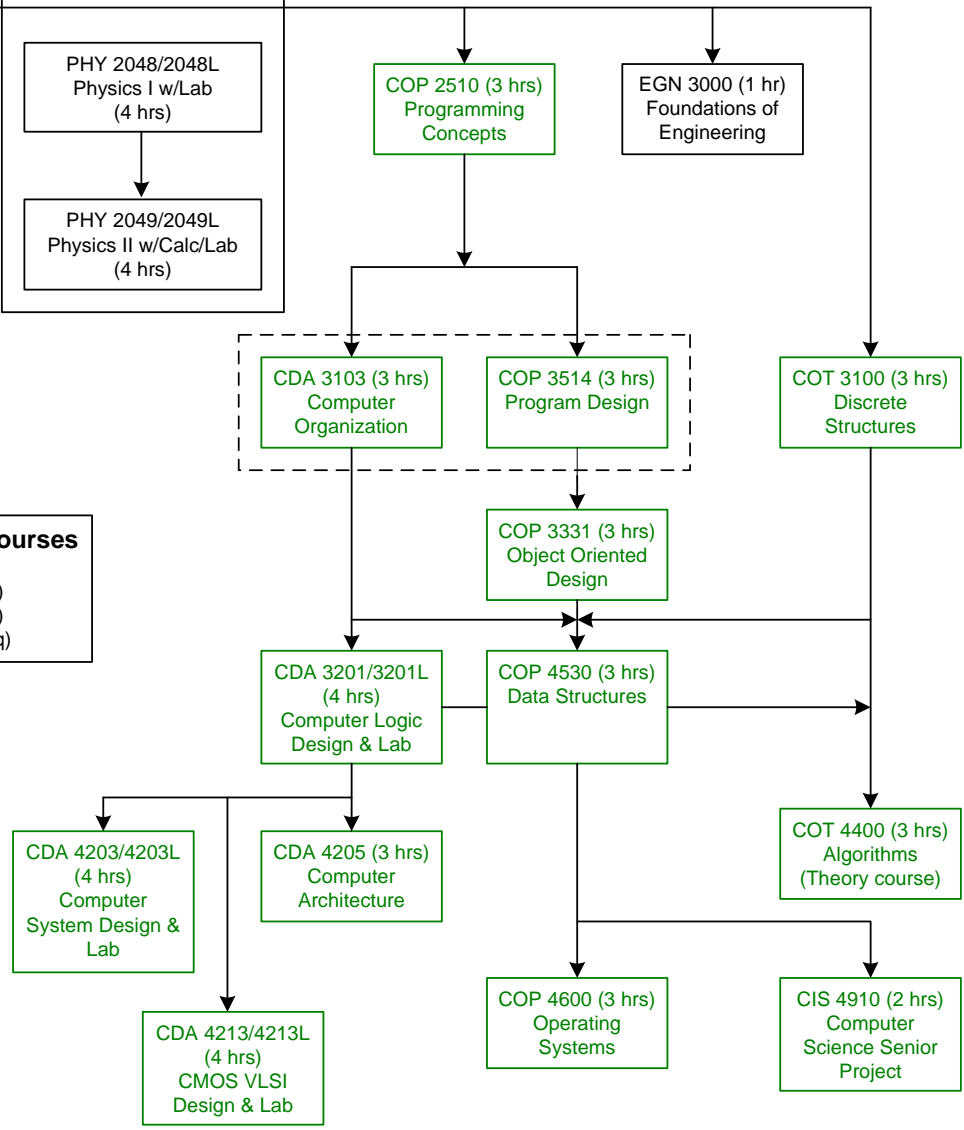
- CDA 4253 – FPGA Design
- CIS 4930 – VLSI Testing
- CIS 4930 – Digital Circuit Synthesis
- CIS 4930 – Design Automation
- CIS 4930 – Embedded Systems
- See undergraduate advisor for all possible elective offerings.

**Exit requirements**

- CIS 4250 Computer Ethics (3 hrs – FKL capstone) - Senior Standing in Department
- ENC 3246 Communications for Engineers (3 hrs)

**Note**

Data Structures is prerequisite for all software electives. Logic Design is prerequisite for all hardware courses. Discrete Structures and Data Structures are prerequisite for all theory courses. See catalog for specific prerequisites for elective courses.



**Hardware Electives (6 hrs) (choose 2 from above list)**

\_\_\_\_\_

\_\_\_\_\_

**Departmental Electives Hardware, Software, Theory (6 hrs)**

\_\_\_\_\_

\_\_\_\_\_

\* Taking MAP 2302 is probably best if seeking a Math minor – see the UG advisor