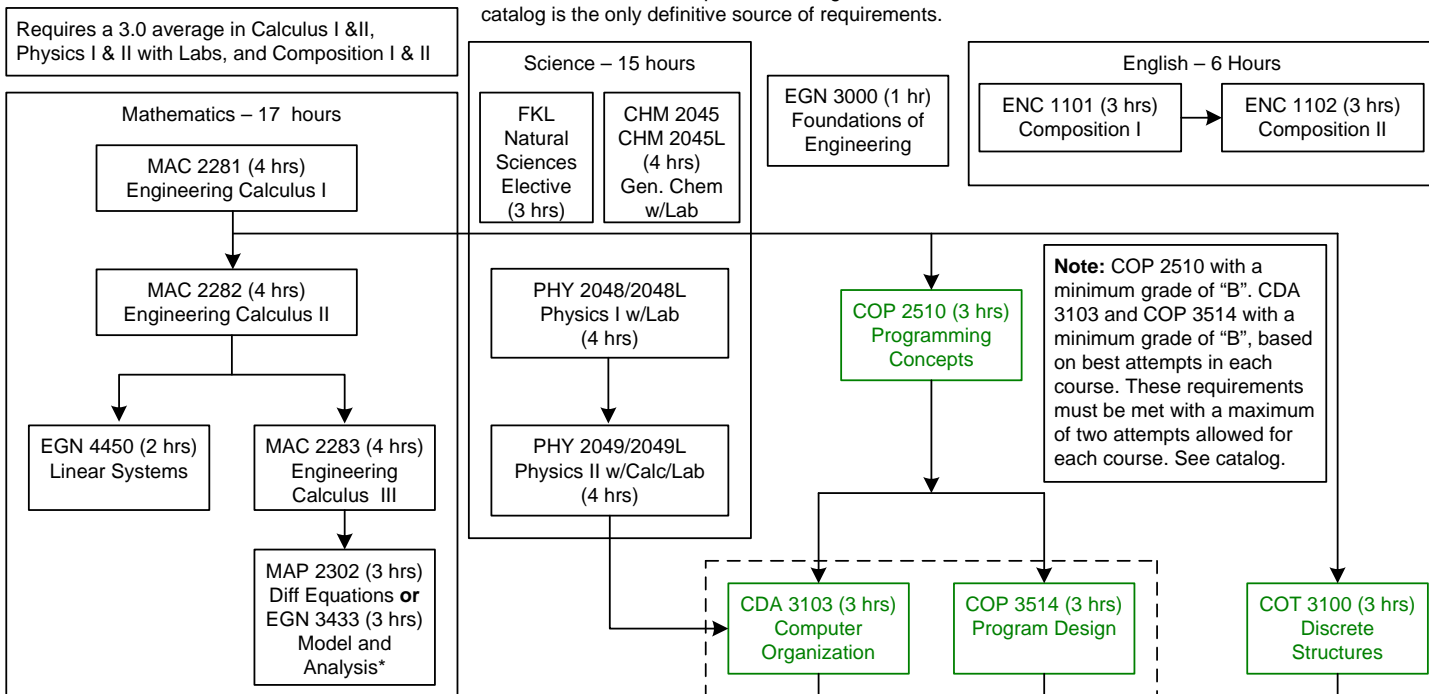


Computer Engineering Program Catalog 2012/2013 – 128 Hours

NOTE: This flow chart is provided as a guide; the catalog is the only definitive source of requirements.



Engineering fundamentals and core courses

- EGN 3615 – Engineering Economy
- EGN 3443 – Engineering Statistics (MAC 2282 pre-req)
- EGN 3373 – Electrical Systems (MAP 2302 co-req)
- EEE 3394 – Electronic Materials (PHY 2049 pre-req)

General Education requirements

- FKL Social and Behavioral Sciences – 6 hrs
- FKL Humanities – 6 hrs
- FKL Fine Arts – 3 hrs
- FKL Human Cultural Diversity and GC – 3 hrs
- Foreign Lang – 8 hrs (or 2 years high school)

Possible hardware electives (3 credit hours each)

- CDA 4253 – FPGA Design and Analysis
- CDA 4621 – Control of Mobile Robots
- CIS 4930 – Advanced VLSI System Design
- CIS 4930 – VLSI Design Automation
- CIS 4930 – Testing/Fault Tolerance Digital Sys
- CIS 4930 – Introduction to Embedded Systems
- CIS 4930 – Digital Circuit Synthesis

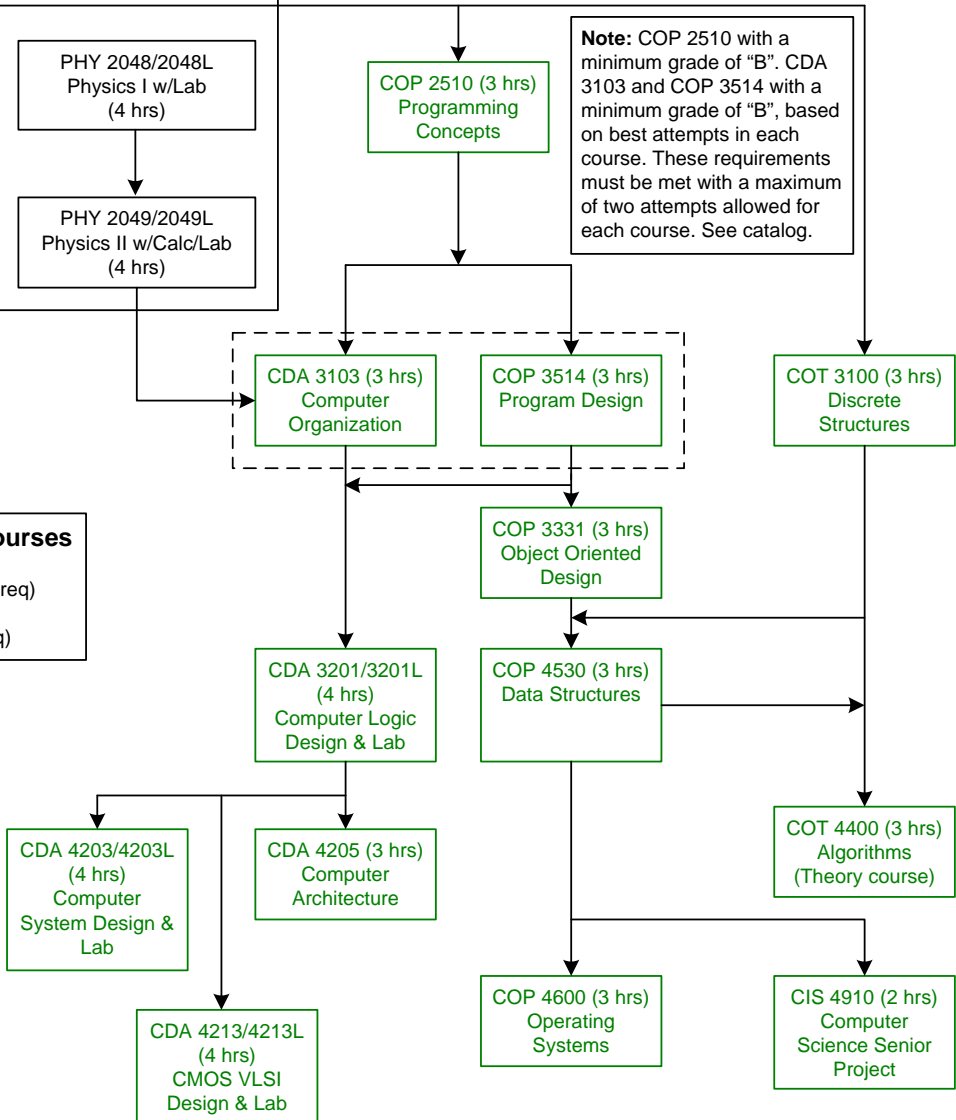
There may be other offerings. See Department advisor for all available options.

Exit requirements

- CIS 4250 Ethical Issues and Professional Conduct (3 hrs – FKL capstone) - Senior Standing in Department
- ENC 3246 Communications for Engineers (3 hrs)

Note

Data Structures is prerequisite for all software electives. Logic Design is prerequisite for all hardware courses. Discrete Structures and Data Structures are prerequisite for all theory courses. See catalog for specific prerequisites for elective courses.



Hardware Electives (6 hrs) (choose 2 from above list)

Departmental Electives Hardware, Software, Theory (6 hrs)

* Taking MAP 2302 is probably best if seeking a Math minor – see the Department advisor