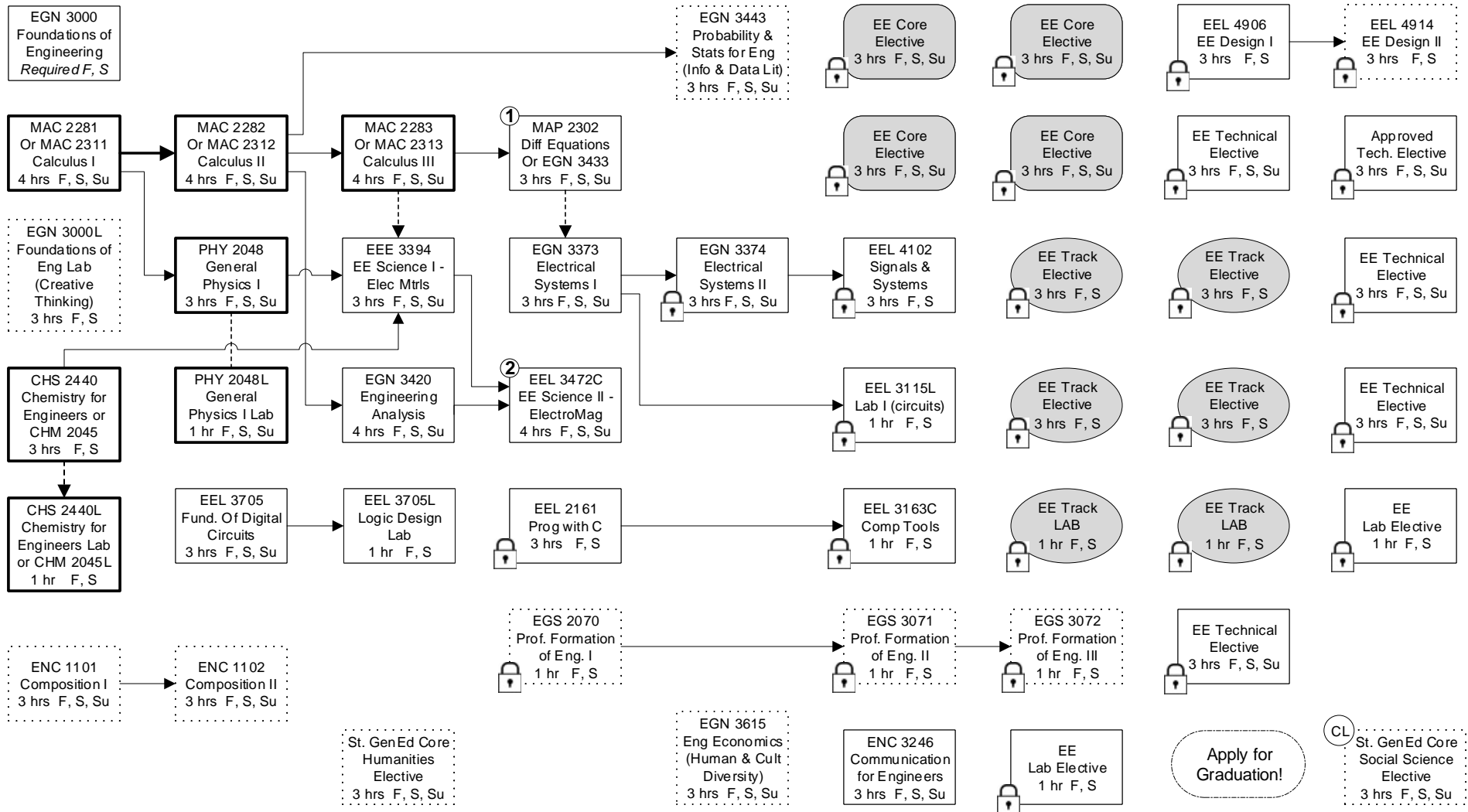


Flowchart USF BS in Electrical Engineering (B.S.E.E.) Fall 2020 Catalog, 128 hours									
Pre-Major (Lower Division) Status					Major (Upper Division) Status				
Year 1		Year 2			Summer	Year 3		Year 4	
Fall 14 hrs	Spring 14 hrs	Fall 15 hrs	Spring 14 hrs	9 hrs	Fall 15 hrs	Spring 15 hrs	Fall 16 hrs	Spring 16 hrs	

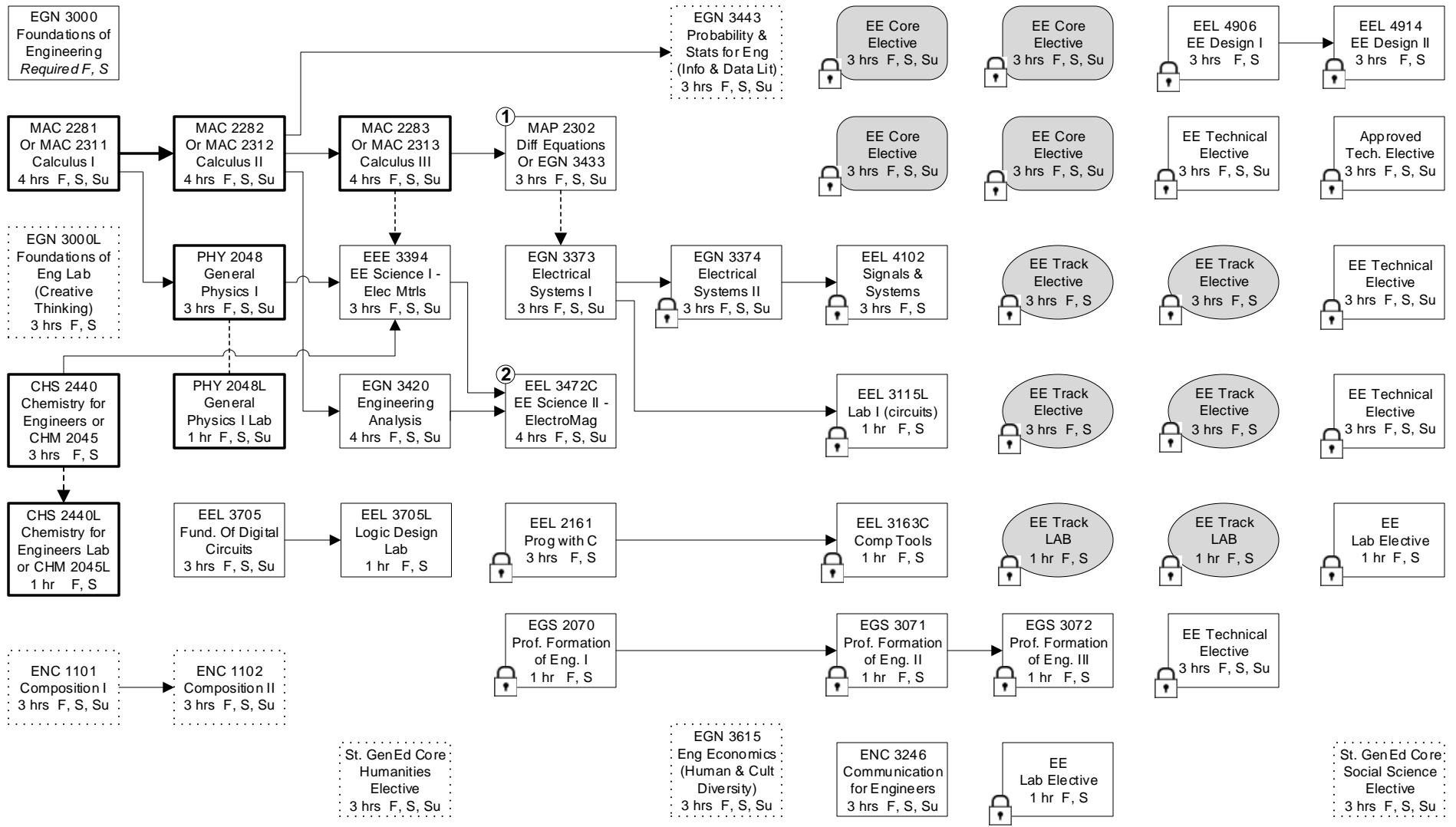
NOTE: See EE website for elective list.



	Term & Sequence	Admission	General Education Notes	Course and Major Notes
LEGEND	F = Fall S = Spring Su = Summer (tentative)	<div style="border: 1px solid black; width: 15px; height: 15px; display: inline-block;"></div> A cumulative GPA of 3.0 (or 2.75 with transcript review) is required in bold-bordered courses to be eligible for Major Status (progression to upper division), min grade C in ea., best attempt used for calculation	<div style="border: 1px dashed black; width: 15px; height: 15px; display: inline-block;"></div> Course meets Enhanced General Education Requirement	Max 2 attempts allowed in req. courses. Unless noted, min grade C in math, science, engineering, and specialization courses.
	Pre-requisite	Restricted classes. Max 2 classes may be taken as a pre-major (lower division) student.	Students must meet the Civic Literacy requirement with credit for AMH 2020, POS 2041 or passing the Civics Literacy test.	Elective Core Class
	Pre/Co-requisite			EE Track: Complete a min. of 2 Tracks. Each track is two 3-credit classes and one 1-credit lab.
	Co-requisite			St. GenEd Core Social Science Elective 3 hrs F, S, Su
				<div style="border: 1px solid black; border-radius: 50%; width: 30px; height: 30px; display: inline-block; text-align: center; vertical-align: middle;">Apply for Graduation!</div>

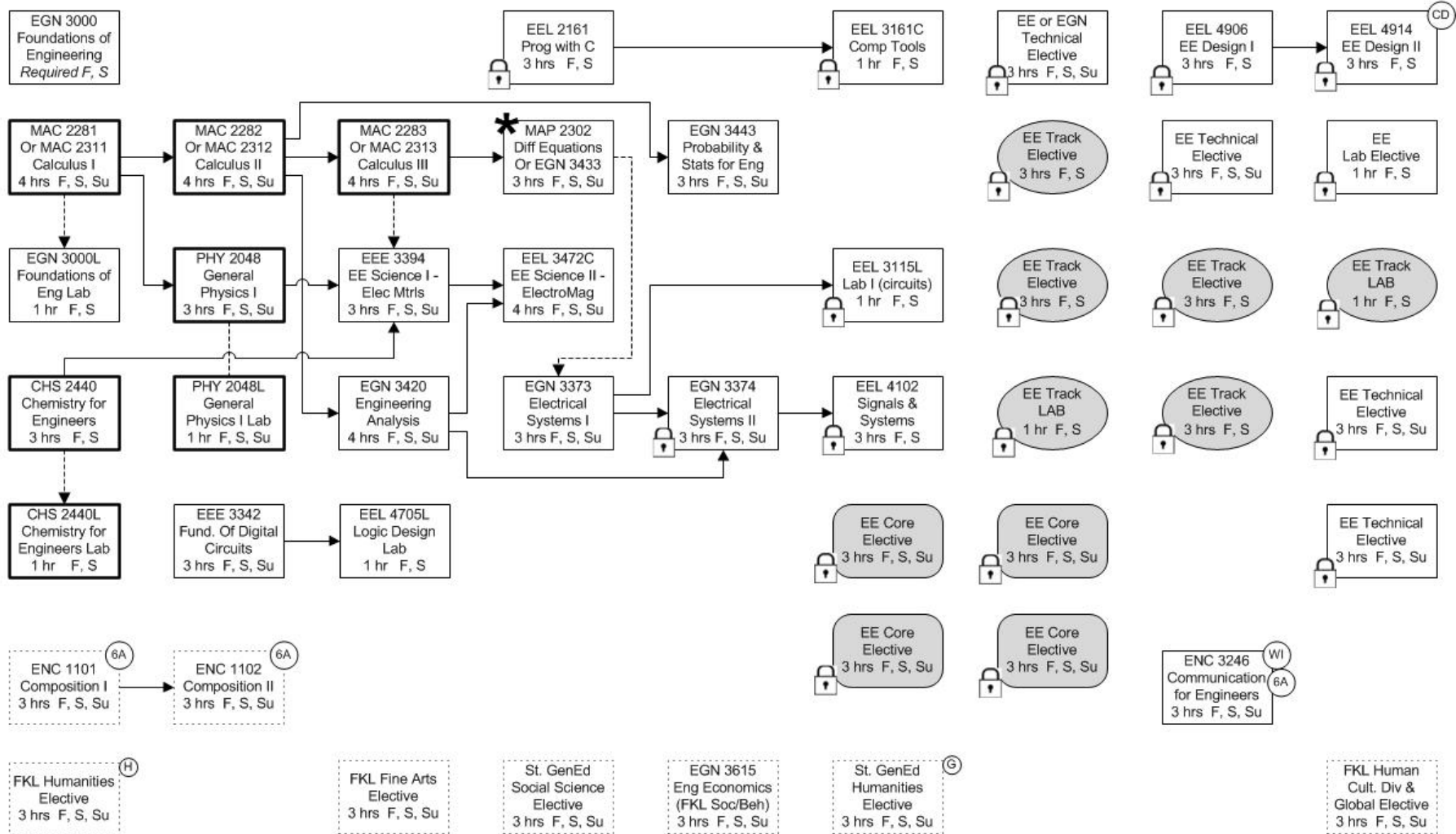
NOTE: This flow chart is provided as a guide; the catalog is the definitive source of requirements.

Pre-Major Status		USF BS in Electrical Engineering (B.S.E.E.)					Fall 2018 Catalog, 128 hours	
Year 1		Year 2		Summer	Year 3		Year 4	
Fall 14 hrs	Spring 14 hrs	Fall 15 hrs	Spring 14 hrs	9 hrs	Fall 15 hrs	Spring 15 hrs	Fall 16 hrs	Spring 16 hrs



LEGEND	Term & Sequence	Admission	General Education Notes	Course and Major Notes
	F = Fall S = Spring Su = Summer (tentative)	A cumulative GPA of 2.75 (or 2.5 with transcript review) is required in bold-bordered courses to be eligible for Major Status, min grade C in ea., best attempt used for calculation	Course meets Enhanced General Education Requirement	Max 2 attempts allowed in req. courses. Unless noted, min grade C in math, science, engineering, and major/specialization courses.
	Pre-requisite	Requires Major Status, max two classes may be taken as pre-major	High Impact Practice Courses TBD.	Elective Core Class
	Pre/Co-requisite		Students must meet the Civic Literacy requirement with credit for AMH 2020, POS 2041 or passing an exam TBD.	EE Track: Complete a min. of 2 Tracks. Each track is two 3-credit classes and one 1-credit lab.
	Co-requisite			① Course requires a min grade B ② If transferring PHY2049/L, EEL 3472C will apply as EE elective and lab.

Pre-Major Status				Major Status				
Year 1		Year 2		Summer	Year 3		Year 4	
Fall 15 hrs	Spring 14 hrs	Fall 15 hrs	Spring 16 hrs	9 hrs	Fall 14 hrs	Spring 16 hrs	Fall 15 hrs	Spring 14 hrs



LEGEND	Term & Sequence	Admission	Course Notes	General Requirements
	F = Fall S = Spring Su = Summer (tentative) → Pre-requisite - - - - -> Pre/Co-requisite - - - - - Co-requisite	A cumulative GPA of 2.75 is required in bold-bordered courses to be eligible for Major Status, min grade C in ea., best attempt used for calculation Requires Major Status, max two classes may be taken as pre-major	Max 2 attempts allowed. Unless noted, min grade C in math, science, engineering, and major/specialization courses. * Course requires a min grade B	FKL/GenEd Class req. closed with a Bachelor's or FL Public AA degree 6A = Gordon Rule Comm. G = must also be Gordon 6A CD = Capstone Design Exit H = must also be HHCP WI = Writing Intensive Exit