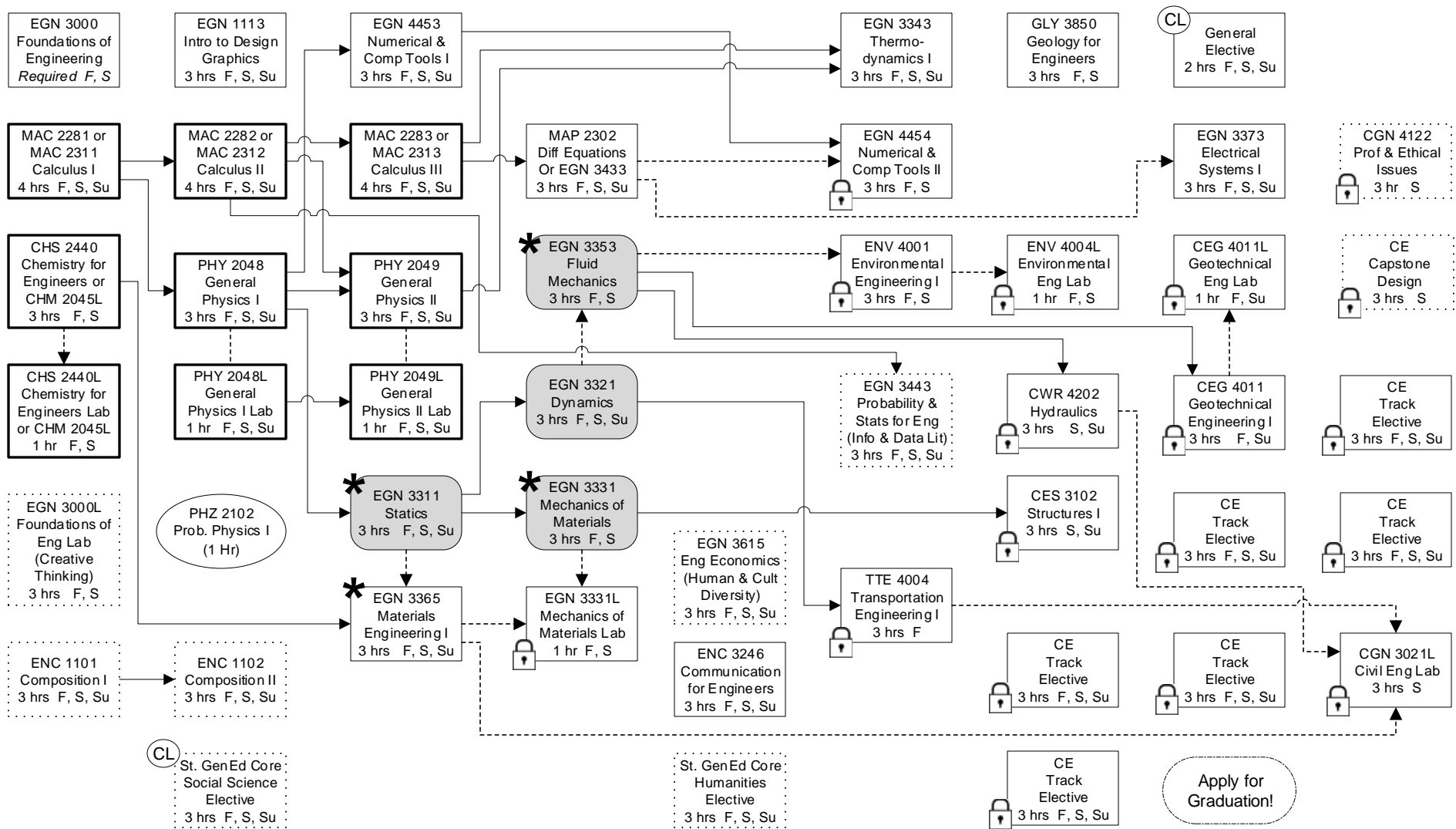


NOTE: This flow chart is provided as a guide; the catalog is the definitive source of requirements.

Flowchart for Pre-Majors USF BS in Civil Engineering (B.S.C.E.) Fall 2019 Catalog, 131 hours

Pre-Major Status				Major Status				
Year 1		Year 2		Summer	Year 3		Year 4	
Fall 14 hrs	Spring 17 hrs	Fall 17 hrs	Spring 13 hrs	9 hrs	Fall 15 hrs	Spring 16 hrs	Fall 15 hrs	Spring 15 hrs



LEGEND	Term & Sequence	Admission	General Education Notes	Course Notes	Major Notes
	F = Fall S = Spring Su = Summer (tentative)	 A cumulative GPA of 3.0 is required in bold-bordered courses to be eligible for Major Status, min grade C in ea., best attempt is used for calculation	 Course meets Enhanced General Education Requirement.	Max 2 attempts allowed	Min Grade C- unless otherwise stated. Two D grades maximum are allowed in engineering and major/specialization courses, see Civil Advisor.
	 Pre-requisite	 Requires Major Status, max two classes may be taken as pre-major	CL Students must meet the Civic Literacy requirement with credit for AMH 2020, POS 2041 or passing the Civics Literacy test.	 High priority courses to be completed ASAP	* These courses require a 2.5 GPA for continuation in the major.
	 Pre/Co-requisite			 Optional class but recommended	
	 Co-requisite				