

**Seagrass**

**Sand**

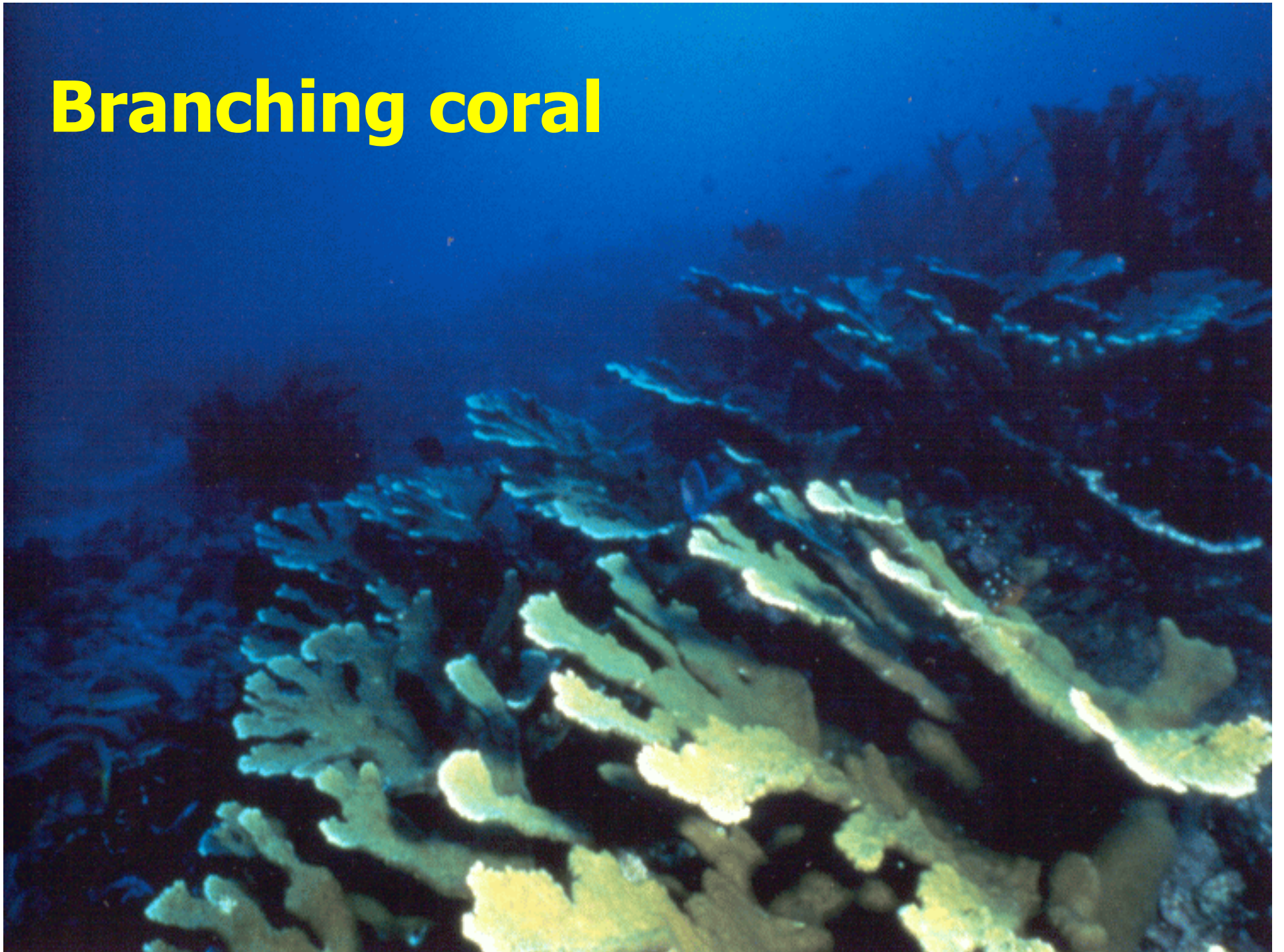
**Grooves**

**Boats**

**Coral reef**

**Spurs**

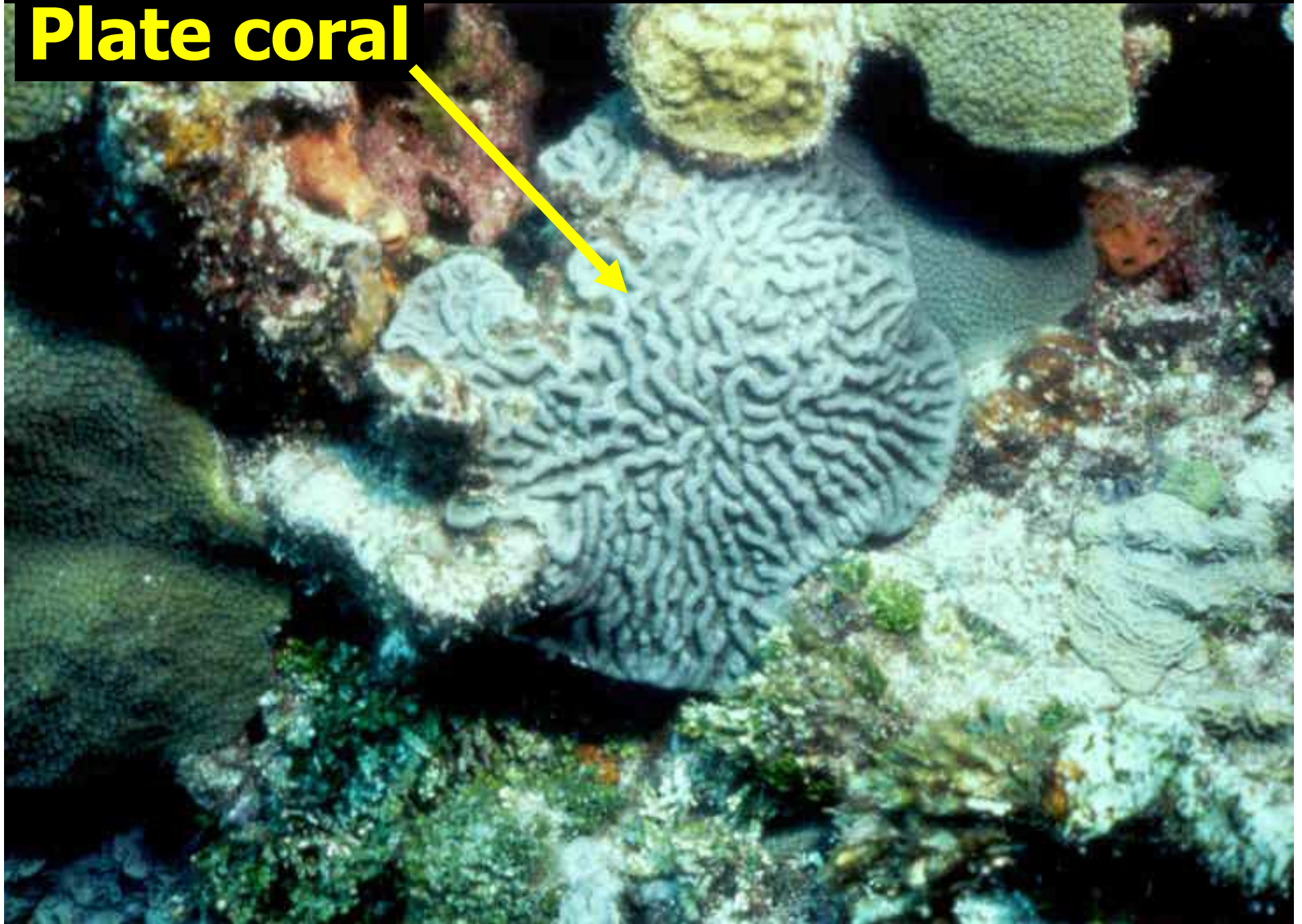
# Branching coral



# Head coral



**Plate coral**



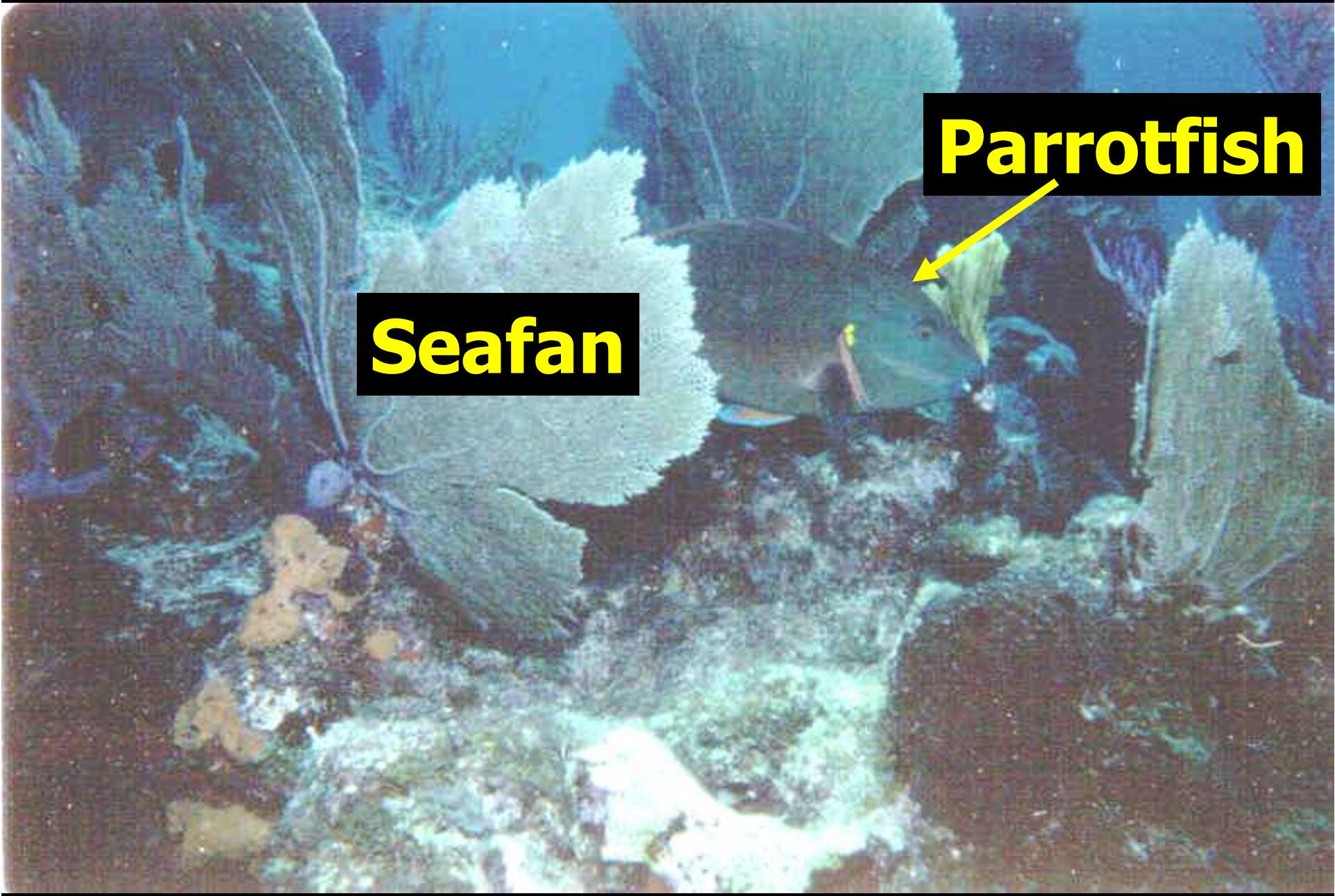
# Coralline algae



An underwater photograph showing a dense field of seagrass. In the center, there is a large, light-colored, porous sponge colony. The water is clear and greenish. Two black text boxes with yellow text are overlaid on the image.

**Seagrass**

**Sponge**



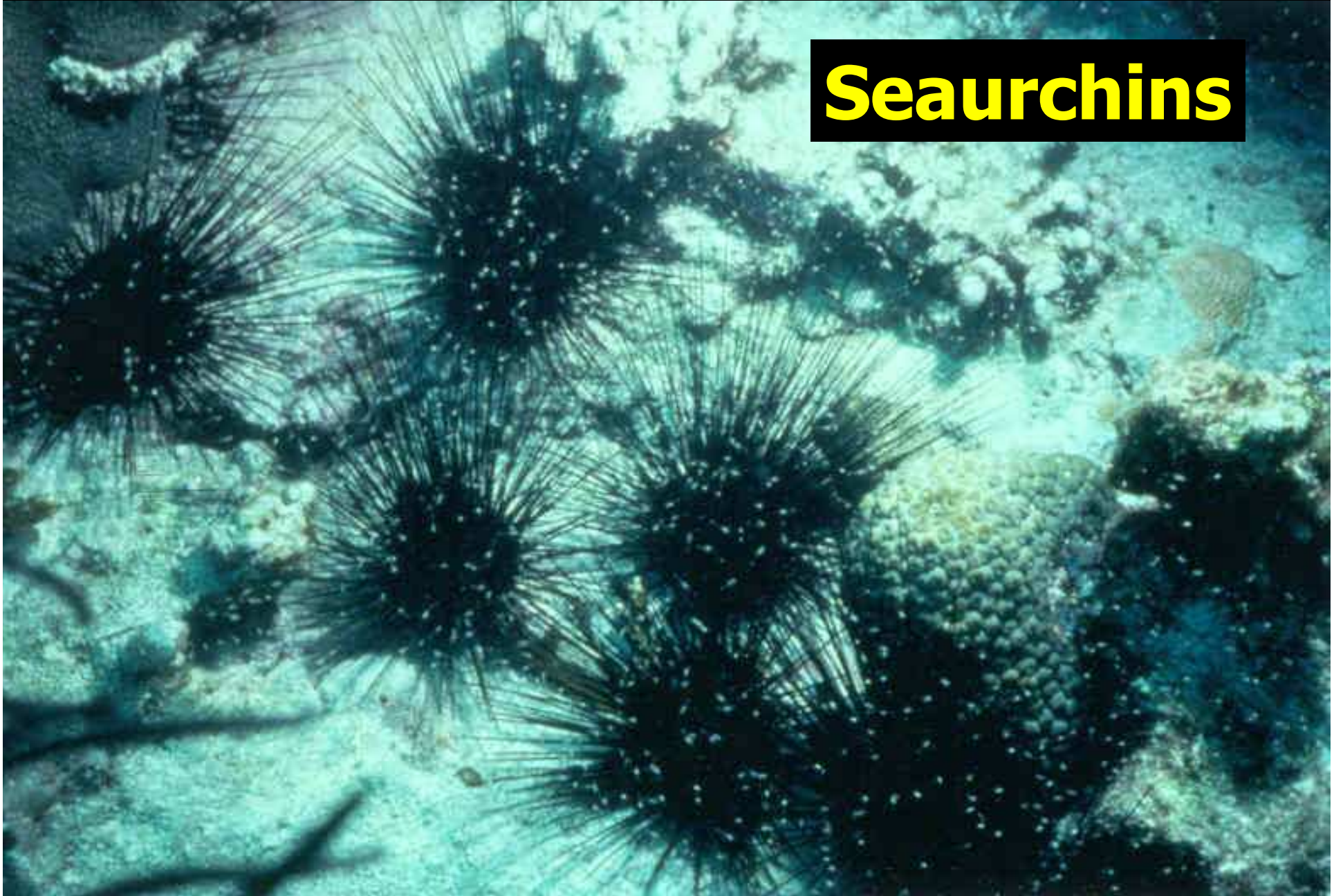
**Seafan**

**Parrotfish**

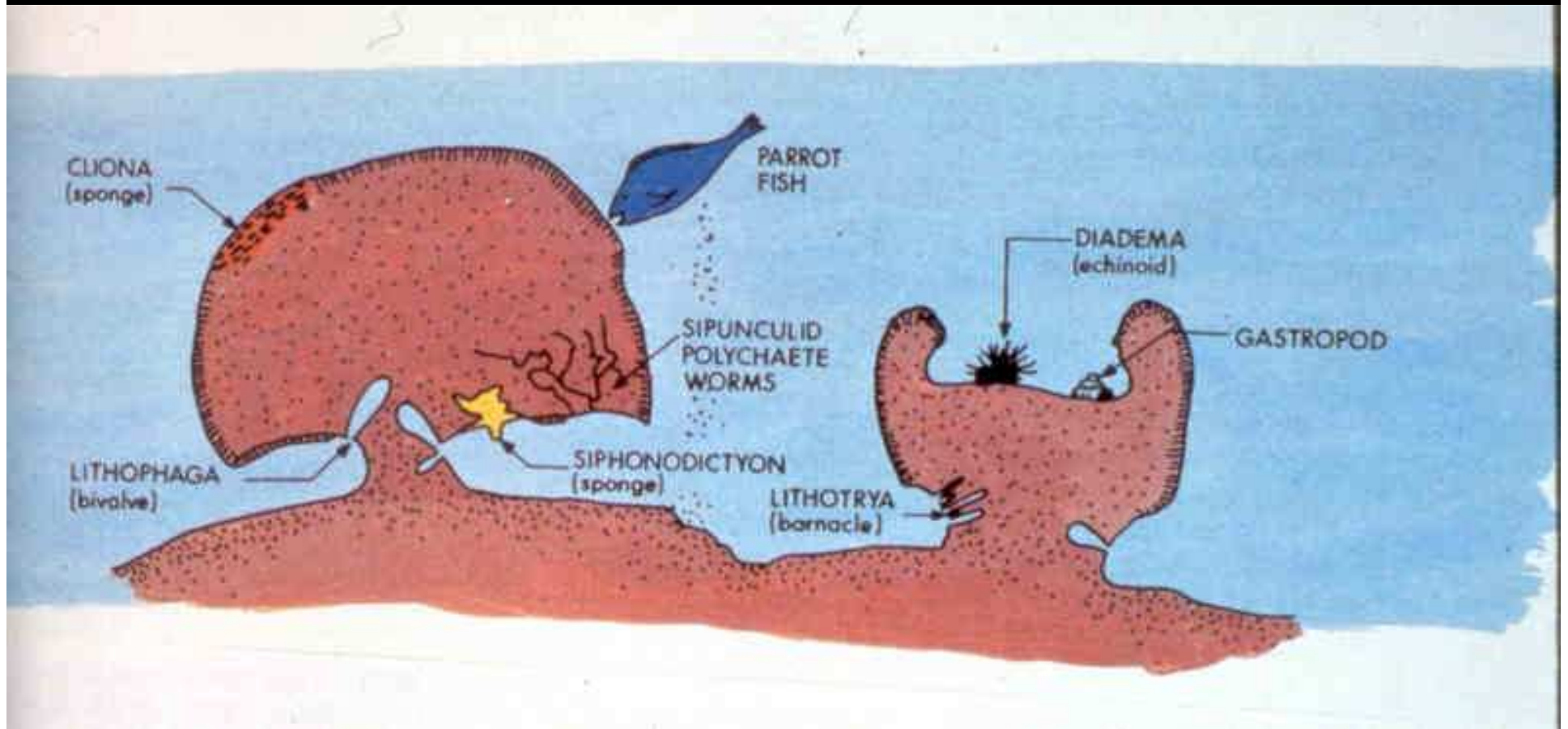




# Seaurchins



# Bioerosion



**Sand**

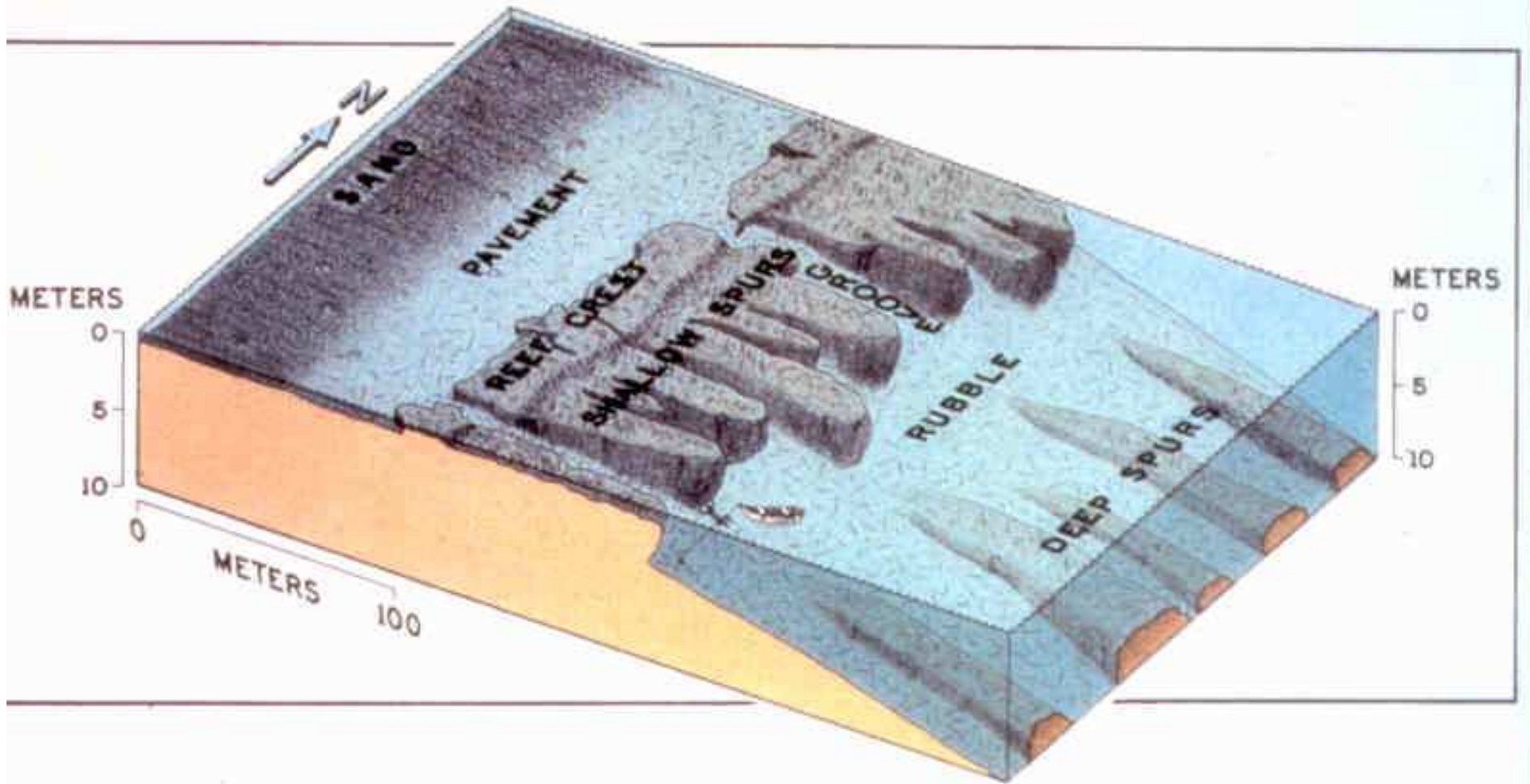


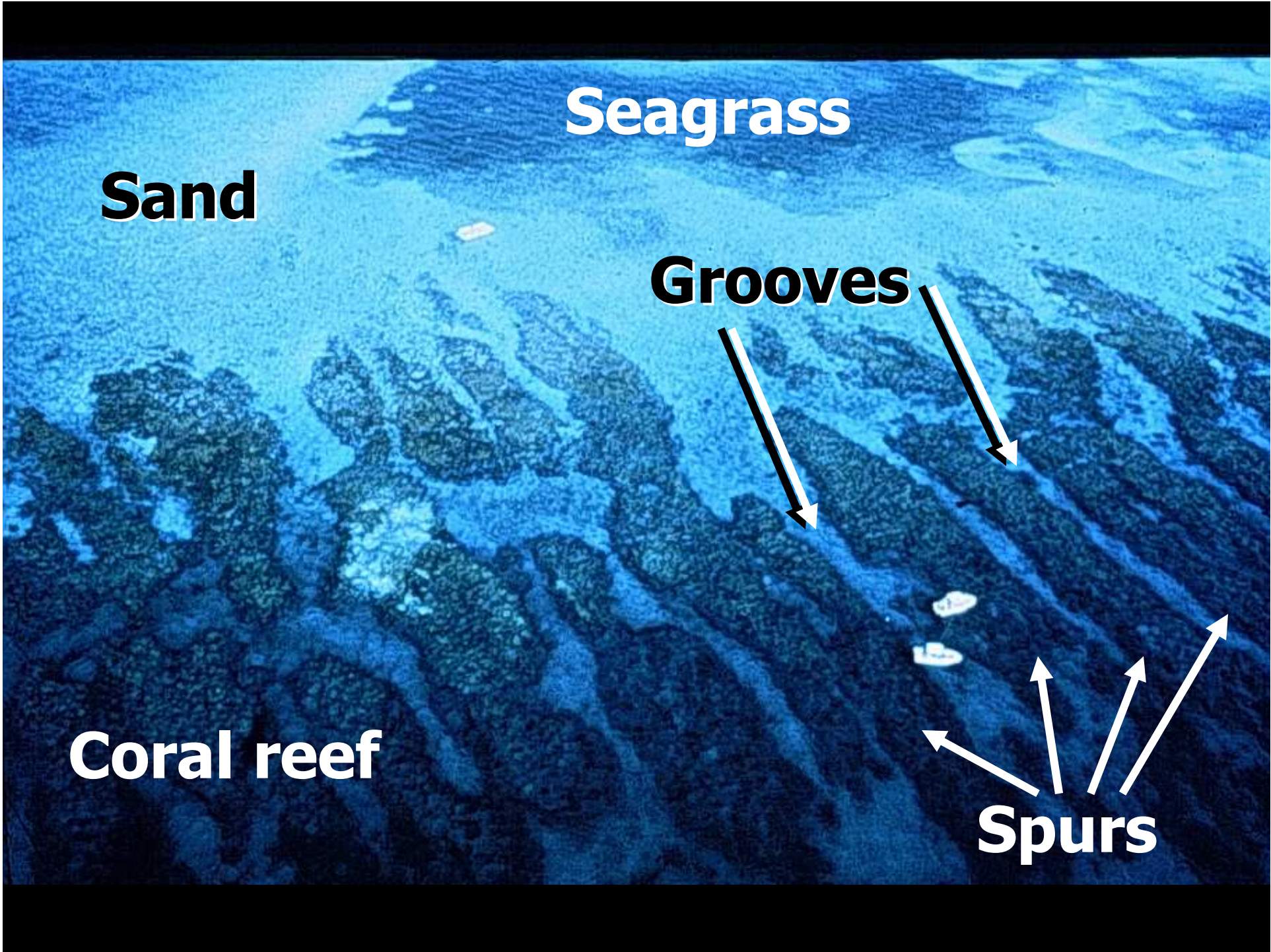
# Sand (closeup)



# Surgeonfish







**Sand**

**Seagrass**

**Grooves**

**Coral reef**

**Spurs**