



UNSUNG HEROES



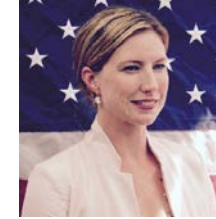
EARTH SCIENCE
APPLIED SCIENCES



**Brock
Murch**

[Brock](#) is the computer system administrator who implements their programs to generate customized imagery and put them on their web portal every day in near real-time. He is the main workforce to implement the web-based SaWS. If anything goes wrong during the whole processes (e.g., internet glitch, government shutdown, changes in data formats, etc.), he is the person to diagnose and fix the problem. The SaWS systems has been operated seamlessly due to his effort in monitoring the entire data flow continuously.

USF/College of Marine Sciences
EcoFore Project: Sargassum Watch System (SaWS)



**Stephanie
Burke**

Stephanie is the SSAI Human Resources Director for the DEVELOP National Program. Stephanie's work is often behind-the-scenes, as she manages all personnel actions for DEVELOP, which includes processing several hundred participants annually.

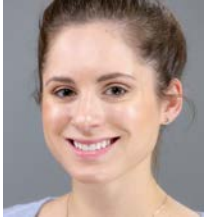
When participants face personal challenges, she steps up to make sure that each participant receives caring support and fair treatment. Stephanie's tireless efforts ensure efficient and effective operation of the program.



UNSUNG HEROES



EARTH SCIENCE
APPLIED SCIENCES



**Mary
Mitkish**

Mary is the grease to the wheels in NASA Harvest's management and communications. She anticipates staff needs often before they're articulated and executes tasks swiftly and efficiently. Since she joined the team, the quality and impact of their social media and website have exponentially improved. She's paid close enough attention to learn to "speak the language" and understand how Harvest's partners and their projects fit in.

Mary managed the 2019 NASA Harvest conference with the expertise of a seasoned events professional – from procurement to visas to logistics, she had it covered and the event couldn't have happened without her.



**Lauren
Deanes**

Lauren has led the processing and integration of inundation and other EO data with CDC SVI and FEMA applications. Her initiative has led to an extension of the team's original focus on Hurricane Harvey to include three additional major hurricanes to evaluate the consistency of associations between storm characteristics, social vulnerability, and FEMA applications. As Lauren enters the Environmental Health PhD program in the JHU School of Public Health this Fall, we look forward to seeing more successful research from her in the future.

JHU/Department of Earth and Planetary Sciences
Health & AQ Project: From Space to Front Porch