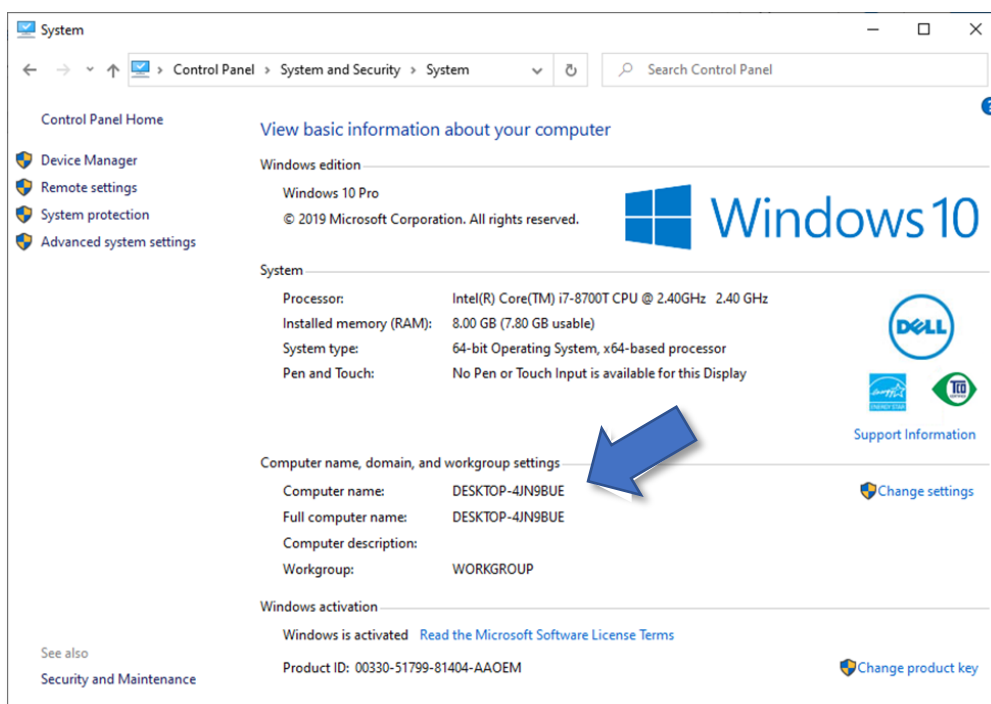


Finding your computer name in Windows 10

1. Open the **Control Panel**.
2. Click **System and Security > System**.
3. On the View basic information about your computer page, see the **Full computer name** under the section **Computer name, domain, and workgroup settings**.



Locating Remote Desktop for Windows 10

In Windows 10 there will be two ways to access Remote Desktop:

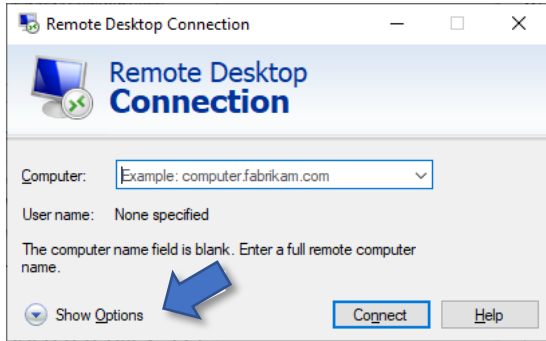
1. Using Windows Search - Enter "Remote Desktop Connection"



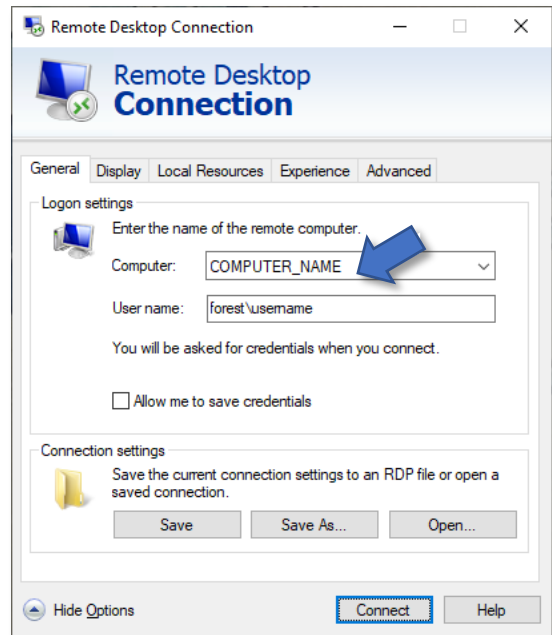
2. Using the Start Button – Navigate to **Windows Accessories > Remote Desktop Connection**

Setting Up Remote Desktop for Windows 10

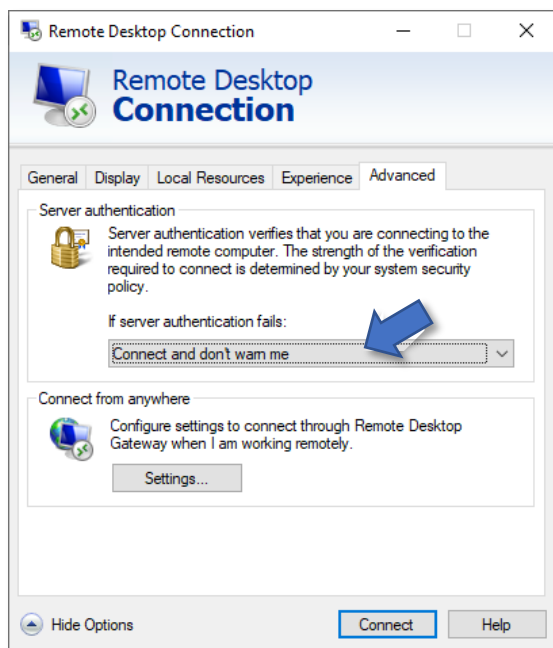
- 1** Once you have located and selected **Remote Desktop Connection** select "Show Options"



- 2** Enter your unique **Computer name** and your **User name** (forest\username)



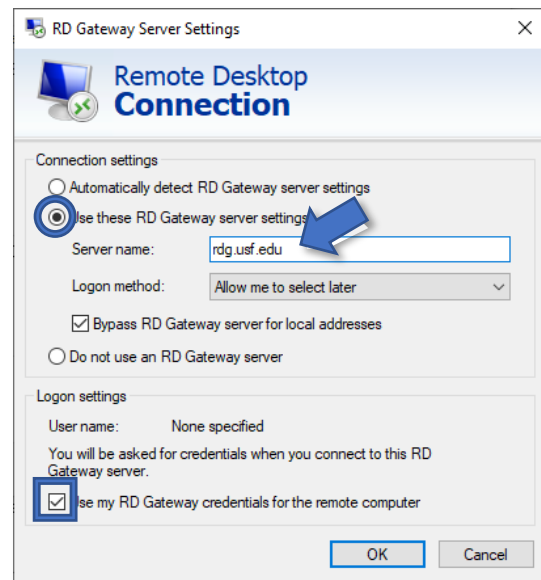
- 3** Once you have entered your user information, select the **Advanced** tab and select **Settings**



- 4** Next select option, "Use these RD Gateway server settings"

Enter Server name: **rdg.usf.edu**

Check "Use my RD Gateway credentials..."



Click OK - You have completed setup

Using Remote Desktop for Windows 10

Once you have completed your initial setup of Remote Desktop you will be able to connect to your USF workstation.

- 1) Select **Connect** after launching Remote Desktop
- 2) Your local computer will connect and open a window to your office Workstation
- 3) From here just login as if you were working on your office computer at work

